

MONTHLY NOTIFIABLE DISEASE SURVEILLANCE REPORT

Data contained within this monthly report is based on information recorded on EpiSurv by public health service staff as at 4 March 2011. Changes made to EpiSurv data after this date will not be reflected in this report. The results presented may be updated and should be regarded as provisional.

Table of contents

1. Key notifiable disease trends	1
2. Outbreaks	3
3. Deaths from notifiable diseases	3
4. Trends in selected diseases to February 2011	4
5. Data tables	5

1. Key notifiable disease trends

- *Campylobacteriosis*: 458 cases of campylobacteriosis were notified in February 2011 compared to 704 cases notified in the same month of the previous year (Figure 1). Four hundred and three (88.0%) cases were laboratory-confirmed. For the 12-month period ending 28 February 2011, the highest rates were reported in Taranaki (210.5 per 100 000 population, 230 cases), South Canterbury (209.5 per 100 000, 117 cases), and Southern (207.4 per 100 000, 629 cases) DHBs compared to a national rate of 155.9 per 100 000.
- *Diarrhoeic shellfish poisoning*: One case of diarrhoeic shellfish poisoning was notified in February 2011. The case had consumed shellfish collected from Papamoa Beach. This case is still under investigation.
- *Giardiasis*: 231 cases of giardiasis were notified in February 2011 compared to 186 cases notified in the same month of the previous year. The highest number of cases was reported in Auckland DHB (53 cases), followed by Counties Manukau (34 cases) and Capital and Coast (33 cases) DHBs. Among the cases where risk information was recorded, 52.6% (30/57) had recreational contact with water, 32.8% (19/58) had contact with farm animals, 31.9% (15/47) had consumed untreated water, 30.2% (19/63) had contact with other symptomatic people, 23.8% (15/63) had attended school, and 22.0% (11/50) had consumed food from retail premises during the incubation period. Ten *Giardia* outbreaks were reported involving 21 cases.
- *Hydatid disease*: Two cases of hydatid disease were notified in February 2011. One case was a 30-39 year old Asian male from Canterbury DHB and is still under investigation. The second case was confirmed and is a 60-69 year old female from Auckland DHB. This is a chronic case first diagnosed as a child.
- *Measles*: Twenty cases of measles were notified in February 2011 (16 confirmed, 2 probable, 2 under investigation), compared to 10 cases notified in the previous month and no cases in the same month of the previous year. The remainder of this section relates to the 18 confirmed and probable cases only. Twelve cases were reported in the Auckland region, with the remaining cases from Canterbury (5 cases) and Hutt Valley (1 case) DHBs. Cases were distributed as follows: <1 year (3), 1-4 years (4), 5-9 years (2), 10-14 years (3), 15-19 years (1), 20-29 years (4), and 30-39 years (1). Three hospitalisations were reported. Sixteen cases had immunisation information recorded. Of these, three cases were reported as having been immunised, two cases receiving one dose of the vaccine (both were older than four years, the current age by which two doses are recommended), while for the remaining case the number of dose was not recorded.

- *Meningococcal disease*: Six cases of meningococcal disease were notified during February 2011, three of which were laboratory-confirmed. In comparison the four cases that were notified in the previous month and all three cases notified during the same month of the previous year were all laboratory-confirmed. For the 12-month period ending 28 February 2011, the highest incidence rates were reported in Hawke's Bay (5.2 per 100 000 population, 8 cases) and Hutt Valley (4.9 per 100 000, 7 cases) DHBs. The highest age-specific rate was in infants aged less than one year (40.8 per 100 000 population, 26 cases), followed by those in the 1-4 years age group (10.1 per 100 000, 25 cases). One death was reported from Canterbury DHB (<1 year).
- *Q fever*: One laboratory confirmed case of Q fever was reported in February 2011. The case had been in Australia, working on a cattle ranch during the incubation period. A number of other farm workers on the ranch also contracted the disease.
- *Ross River virus infection*: One laboratory confirmed case of Ross River virus was reported in February 2011. The case had been in Australia during the incubation period.
- *VTEC/STEC infection*: 24 cases of VTEC/STEC infection were notified in February 2011, compared to 21 cases notified in the preceding month and 18 cases in the same month of the previous year. Ten of these cases were laboratory confirmed. Counties Manukau DHB had the highest number of cases (7 cases). The cases were aged from two to 87 years, with the highest number of cases in children aged less than five years (9 cases). Of the 20 cases where information was recorded, nine cases were hospitalised. *Escherichia coli* O157:H7 was isolated in eight cases. The serotypes for the remaining cases are unknown as yet. Among the cases for which risk factor information was recorded, 100% (4/4) had contact with farm animals, 100% (4/4) had contact with pets, 66.7% (2/3) had contact with manure, 57.1% (4/7) had contact with sick animals, and 42.9% (3/7) had contact with another person with similar symptoms during the incubation period. One outbreak involving three cases of *E. coli* O157:H7 was reported. The outbreak involved one family and was spread across two households.
- *Yersiniosis*: 54 yersiniosis cases were notified in February 2011, compared to 38 cases notified in the preceding month and 31 cases the same month of the previous year (Figure 2). Seven cases were hospitalised. Capital and Coast DHB had the highest numbers of cases (12 cases) followed by Waitemata (9 cases) and Auckland and Counties Manukau DHBs (7 cases each). Twenty-one cases occurred in the 1-4 years age group, seven in the 30-39 years age group, and five cases in the 10-14, 20-29 and 70+ years age groups. The biotype involved was identified in 38 (70.4%) of the cases, and the dominant biotypes were *Yersinia enterocolitica* Biotype 4 (24 cases), *Y. enterocolitica* Biotype 2 (8 cases), and *Y. enterocolitica* Biotype 3 (4 cases). Among the cases for which risk factor information was recorded, 53.3% (8/15) consumed food from a food premise, 41.2% (7/17) had contact with recreational water, 29.4% (5/17) had contact with farm animals, and 11.8% (2/17) had contact with faecal material during the incubation period. One household outbreak involving two cases was reported.

2. Outbreaks

Finalised outbreak reports: 10 outbreak reports were reported and finalised during February 2011 (Table 1).

Table 1: Summary of finalised outbreaks reported to ESR during February 2011

Organism/Toxin/Illness	Health District(s) where exposure occurred	Number of outbreaks	Total number of cases
Gastroenteritis	Auckland, Hawke's Bay	6	20
<i>Giardia</i> ¹	Auckland	1	3
<i>Norovirus</i>	West Coast, Wellington	2	33
<i>Shigella</i>	Auckland	1	4
Total		10	60

¹ Outbreak with overseas exposure location (Australia)

Interim outbreak reports: 26 interim outbreaks were reported in February 2011 (Table 2). The status of the outbreak and cases involved are subject to change, as more data becomes available.

Table 2: Summary of interim outbreaks reported to ESR during February 2011

Organism/Toxin/Illness	Health District(s) where exposure occurred	Number of outbreaks	Total number of cases
<i>Bordetella pertussis</i>	Taranaki, Wellington	2	6
<i>Campylobacter</i> ²	Waikato, Rotorua	2	-
<i>Campylobacter/Cryptosporidium</i> ²	Waikato	1	-
<i>Escherichia coli</i> O157:H7	Auckland	1	3
Gastroenteritis	Auckland, Waikato, Tauranga, Manawatu, Dunedin, Southland	11	35
<i>Giardia</i>	Auckland, Waikato, Nelson	8	18
<i>Yersinia</i>	Marlborough, Dunedin	1	2
Total	Waikato	26	64

² Interim outbreaks with no cases entered to date

3. Deaths from notifiable diseases

One death was reported in February 2011 from meningococcal disease (Table 3).

Table 3: Summary of deaths from notifiable diseases reported during February 2011

Disease	District Health Board	Age group (years)
Meningococcal disease	Canterbury	<1

4. Trends in selected diseases to February 2011

Figure 1: Campylobacteriosis notifications by month, January 2005 – February 2011

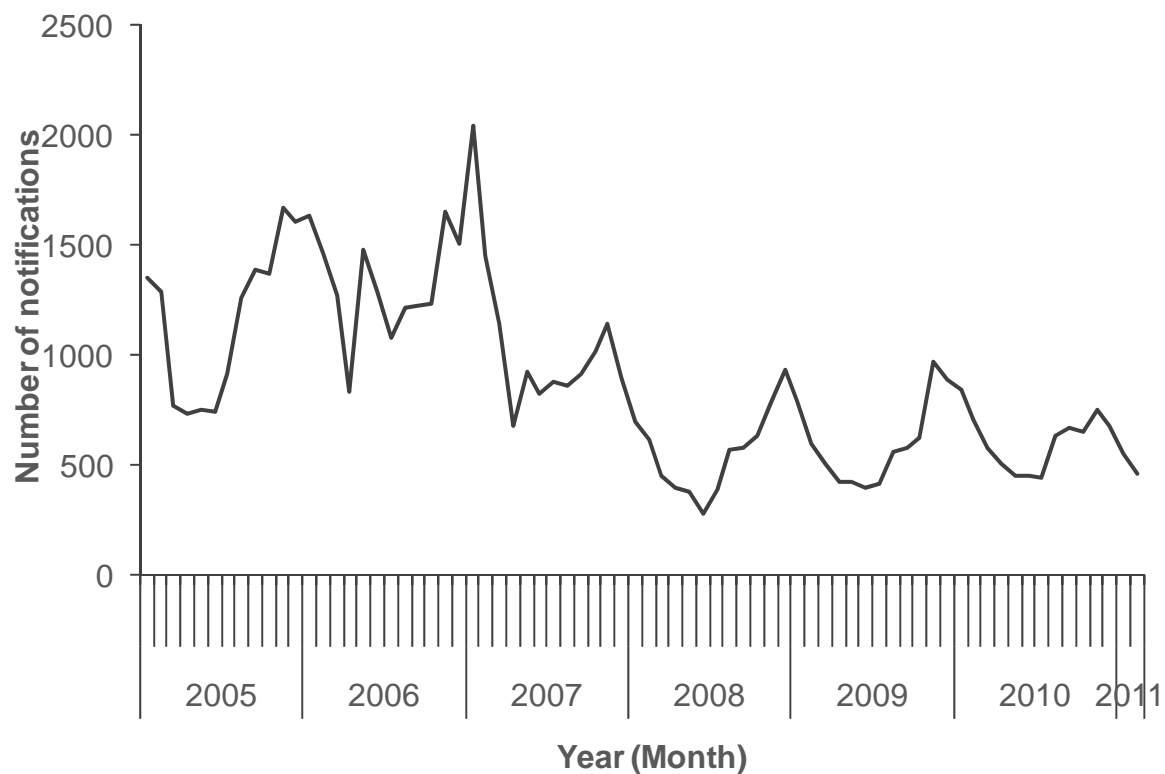
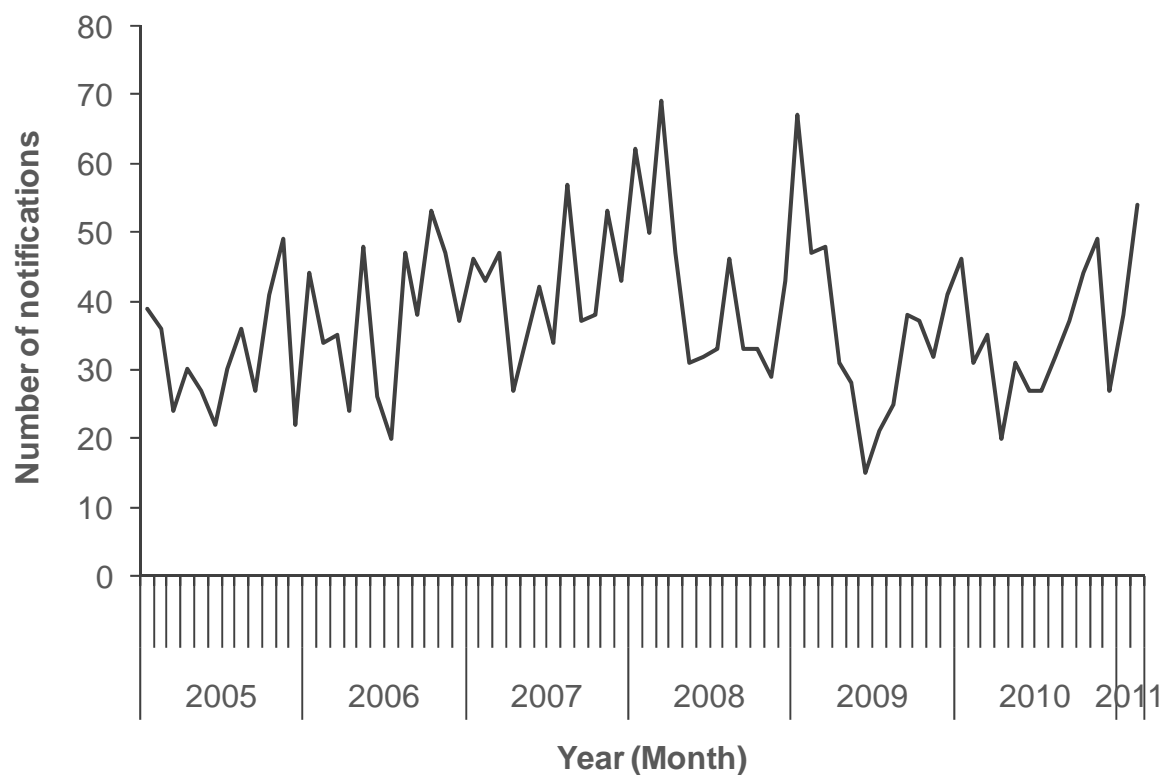


Figure 2: Yersiniosis notifications by month, January 2005 – February 2011



5. Data tables

National Notifiable Disease Surveillance Data February 2011

Disease	Current Year - 2011 ¹			Previous Year - 2010		
	February 2011 Cases	Cumulative total since 1 January	Current 12 Month Rate ²	February 2010 Cases	Cumulative total since 1 January	Current 12 Month Rate ²
Campylobacteriosis	458	1007	155.9	704	1544	170.0
Cryptosporidiosis	25	56	20.2	58	126	20.8
Dengue fever	8	11	1.3	6	6	2.2
Gastroenteritis ³	66	107	11.8	41	83	16.8
Giardiasis	231	403	47.0	186	336	39.1
Haemophilus influenzae type b	0	0	0.1	1	4	0.3
Hepatitis A	7	11	1.1	5	8	1.0
Hepatitis B ⁴	7	10	1.2	4	8	1.2
Hepatitis C ⁴	4	4	0.4	1	2	0.6
Invasive pneumococcal disease	15	44	12.4	11	38	15.3
Lead absorption	28	41	4.9	19	27	6.0
Legionellosis	27	44	4.5	12	24	1.8
Leptospirosis	11	14	1.7	10	20	1.9
Listeriosis	3	6	0.4	6	10	0.8
Malaria	4	10	0.9	3	13	1.2
Measles	20	30	1.8	0	0	5.4
Meningococcal disease	6	10	2.2	3	10	2.9
Mumps	8	9	1.0	2	8	1.6
Paratyphoid fever	3	3	0.4	3	4	0.6
Pertussis	84	140	18.9	95	189	31.7
Rheumatic fever	12	18	3.8	11	20	3.3
Rickettsial disease	1	1	0.3	1	2	0.2
Rubella	3	4	0.2	0	0	0.1
Salmonellosis	122	247	26.8	124	223	24.8
Shigellosis	11	19	2.6	7	12	2.5
Tuberculosis disease	24	54	7.0	26	56	7.0
Typhoid fever	2	5	0.5	5	13	0.7
VTEC/STEC infection	24	45	3.6	18	27	3.0
Yersiniosis	54	92	9.6	31	77	9.1

¹ These data are provisional

² Rate is based on the cumulative total for the current year (12 months up to and including February 2011) or the previous year (12 months up to and including February 2010), expressed as cases per 100 000

³ Cases of gastroenteritis from a common source or foodborne intoxication

⁴ Only acute cases of this disease are currently notifiable

Other notifiable infectious disease reported in February: Diarrhoeic shellfish poisoning (1) , Hepatitis NOS (1) , Hydatid disease (2) , Ross River virus infection (1)

Notifiable Disease Surveillance Data by District Health Board February 2011

		Cases¹ and current rate² for February 2011 by District Health Board³																			
		Northland	Waitemata	Auckland	Counties Manukau	Waikato	Lakes	Bay of Plenty	Tairāwhiti	Taranaki	Hawke's Bay	Whanganui	MidCentral	Hutt Valley	Capital and Coast	Wairarapa	Nelson Marlborough	West Coast	Canterbury	South Canterbury	Southern
Disease																					
	Cases	8	48	49	25	61	17	19	3	10	19	3	13	5	31	5	20	0	54	8	60
Campylobacteriosis	Rate	117.6	143.4	136.4	99.7	181.7	174.5	137.1	75.3	210.5	184.8	121.9	131.0	189.2	176.1	161.4	170.9	177.2	173.9	209.5	207.4
Cryptosporidiosis	Cases	1	1	1	1	4	0	1	0	1	0	0	0	5	4	0	2	0	4	0	0
	Rate	25.4	14.7	13.5	6.7	39.2	14.6	8.1	10.8	27.5	27	6.3	10.8	11.1	10.6	14.9	24.6	24.4	34.6	85.9	25.7
Dengue fever	Cases	0	0	2	2	1	1	0	0	0	0	0	0	2	0	0	0	0	0	0	0
	Rate	1.3	0.9	2.7	1	2.7	1.9	1.4	2.2	0.9	0	1.6	0	0	2.1	0	0	0	0.6	1.8	1.3
Gastroenteritis	Cases	0	9	12	5	0	1	0	0	0	0	1	2	3	4	0	0	1	23	2	3
	Rate	1.3	10.8	15.5	6.1	6.3	6.8	5.2	0	11.9	1.9	25.3	23.9	38.9	31.2	7.4	5.8	24.4	12.2	7.2	3.3
Giardiasis	Cases	2	24	53	34	15	4	13	0	3	3	0	3	9	33	0	6	0	4	3	22
	Rate	25.4	47.8	74.4	44.4	52.1	36.1	36.7	32.3	31.1	68.3	31.7	16.7	39.6	56	39.7	38.4	21.4	50	41.2	40.2
Haemophilus influenzae type b	Cases	0	0	0	0	0	0	0	0	0	0	0	0	0	0	0	0	0	0	0	0
	Rate	0.0	0.2	0.0	0.2	0.0	0.0	0.0	0.0	0.0	0.6	1.6	0.0	0.0	0.0	0.0	0.0	0.0	0.0	0.0	0.0
Hepatitis A	Cases	0	1	2	2	2	0	0	0	0	0	0	0	0	0	0	0	0	0	0	0
	Rate	0.6	0.4	1.6	2.2	1.4	1.0	0.0	4.3	0.0	1.9	1.6	1.2	0.7	1.0	0.0	0.0	0.0	1.4	0.0	1.0
Hepatitis B	Cases	0	2	1	0	0	2	0	0	0	0	0	1	0	0	0	0	0	1	0	0
	Rate	0.6	0.7	2.2	1.6	0.5	2.9	0.0	8.6	0.0	1.9	1.6	1.2	1.4	0.7	0.0	0.7	0.0	1.4	0.0	1.0
Hepatitis C	Cases	0	1	1	0	0	0	0	0	0	0	0	2	0	0	0	0	0	0	0	0
	Rate	0.0	0.4	0.4	0.4	0.0	0.0	0.0	0.0	1.8	0.0	0.0	1.2	0.7	1.4	0.0	0.0	0.0	0.6	0.0	0.3
Invasive pneumococcal disease	Cases	1	2	1	3	0	0	0	0	1	2	0	0	0	0	0	0	0	3	0	2
	Rate	11.4	11.0	10.4	21.6	13.2	15.6	15.2	2.2	9.2	17.4	15.8	9.6	13.9	6.9	12.4	3.6	3.1	9.1	7.2	16.5
Lead absorption	Cases	0	11	7	4	0	0	0	0	0	1	0	1	0	0	0	0	1	1	0	2
	Rate	3.2	5.0	4.7	3.1	4.4	0.0	2.4	2.2	5.5	6.4	11.1	4.8	13.2	3.8	7.4	3.6	3.1	4.9	9.0	8.2
Legionellosis	Cases	1	2	0	1	1	0	2	0	1	0	0	0	0	1	1	1	1	10	0	5
	Rate	5.7	4.1	2.9	2.9	1.4	1.0	3.8	0.0	2.7	2.6	0.0	1.8	2.8	1.4	2.5	1.4	6.1	15.0	1.8	7.6
Leptospirosis	Cases	0	0	0	0	0	0	2	0	0	2	3	1	0	0	0	0	0	3	0	0
	Rate	1.3	0.2	0.0	0.2	3.3	0.0	1.9	6.5	0.0	9.0	15.8	6.6	0.0	0.0	5.0	0.7	15.3	1.0	0.0	1.3
Listeriosis	Cases	0	0	0	0	1	0	1	0	0	0	0	0	1	0	0	0	0	0	0	0
	Rate	0.6	0.0	0.9	0.6	0.3	0.0	0.5	0.0	0.9	0.0	1.6	1.2	1.4	0.3	0.0	0.0	3.1	0.0	0.0	0.3
Malaria	Cases	0	1	2	1	0	0	0	0	0	0	0	0	0	0	0	0	0	0	0	0
	Rate	0.0	0.7	2.9	1.6	0.0	0.0	1.0	0.0	0.9	0.0	0.0	0.0	0.0	0.7	0.0	2.9	0.0	1.0	0.0	0.7
Measles	Cases	0	5	2	6	0	0	0	0	0	0	0	0	1	0	0	0	0	6	0	0
	Rate	19.7	2.2	1.8	2.0	0.0	1.0	0.5	2.2	0.0	0.6	0.0	0.6	0.7	1.0	2.5	0.0	3.1	1.2	0.0	0.0
Meningococcal disease	Cases	0	0	0	2	0	1	0	0	0	1	0	0	0	0	0	0	0	2	0	0
	Rate	3.2	2.0	1.3	2.6	1.9	3.9	3.3	2.2	0.9	5.2	1.6	3.0	4.9	1.4	0.0	0.7	3.1	1.6	0.0	2.3
Mumps	Cases	0	1	3	3	0	0	0	0	0	0	0	0	0	0	0	0	0	1	0	0
	Rate	1.3	1.3	0.7	1.4	0.3	0.0	0.0	0.0	3.7	0.0	0.0	0.0	2.8	1.0	5.0	0.7	0.0	1.4	0.0	0.3
Paratyphoid fever	Cases	0	0	2	0	0	0	0	0	0	0	0	1	0	0	0	0	0	0	0	0
	Rate	0.0	0.0	1.8	0.4	0.3	1.0	0.0	0.0	0.0	0.0	0.0	0.6	0.0	1.4	0.0	0.0	3.1	0.0	0.0	0.0
Pertussis	Cases	0	9	10	3	6	1	1	0	5	4	0	1	8	19	0	1	1	8	1	6
	Rate	3.2	12.3	20.4	13.2	21.4	4.9	18.1	15.1	26.5	16.1	6.3	19.7	21.6	31.2	12.4	19.6	45.8	29.3	12.5	17.1
Rheumatic fever	Cases	1	1	0	5	0	0	0	0	0	1	0	0	1	1	0	0	0	2	0	0
	Rate	10.2	1.9	1.6	12.0	4.9	1.9	3.3	15.1	1.8	5.2	3.2	2.4	5.6	3.4	5.0	0.0	0.0	0.8	0.0	0.0
Rickettsial disease	Cases	0	0	0	0	0	0	0	0	1	0	0	0	0	0	0	0	0	0	0	0
	Rate	0.0	0.6	0.2	0.2	1.9	0.0	0.0	0.0	0.9	0.0	0.0	0.0	0.0	0.0	0.0	0.0	0.0	0.0	0.0	0.0
Rubella	Cases	0	0	0	3	0	0	0	0	0	0	0	0	0	0	0	0	0	0	0	0
	Rate	0.6	0.2	0.2	0.6	0.0	0.0	0.0	0.0	0.0	0.0	0.0	0.7	0.3	0.0	0.0	0.0	0.0	0.0	0.0	0.0
Salmonellosis	Cases	7	13	12	8	12	2	3	3	0	3	0	1	8	8	1	5	0	12	4	20
	Rate	26.1	20.1	22.2	16.5	25	24.4	23.8	30.1	22.9	25.8	14.2	16.1	22.3	17.2	29.8	34.8	24.4	30.7	64.4	71.6
Shigellosis	Cases	0	4	2	1	1	0	1	0	0	0	0	0	0	1	0	0	0	0	0	1
	Rate	4.4	3.9	3.6	3.7	3.3	0.0	3.3	0.0	0.0	3.2	0.0	0.0	1.4	1.7	0.0	1.4	0.0	2.4	1.8	1.3
Tuberculosis disease	Cases	2	3	5	2	1	0	1	0	0	1	0	0	4	4	0	0	0	1	0	0
	Rate	3.8	5.0	14.9	11.2	6.0	1.9	3.3	8.6	0.9	9.0	3.2	4.8	11.1	11.7	2.5	1.4	3.1	5.3	0.0	3.0
Typhoid fever	Cases	0	1	0	0	0	0	0	0	0	0	0	0	0	0	0	0	0	1	0	0
	Rate	0.6	0.6	1.1	0.8	0.3	0.0	1.9	0.0	0.0	0.6	0.0	0.0	0.0	0.7	0.0	0.0	0.0	0.4	0.0	0.0
VTEC/STEC infection	Cases	1	0	0	7	4	1	3	0	1	0	0	0	1	2	0	0	0	3	1	0
	Rate	2.5	2.0	2.0	3.1	8.8	10.7	5.2	17.2	6.4	5.8	3.2	0.6	0.7	0.7	7.4	0.0	3.1	4.3	3.6	1.6
Yersiniosis	Cases	0	9	7	7	1	0	1	1	0	2	1	0	3	12	0	2	0	6	0	2
	Rate	4.4	11.0	8.7	6.1	9.3	8.8	8.1	12.9	17.4	10.9	7.9	7.8	14.6	21.3	7.4	7.2	9.2	9.4	14.3	3.6

¹ These data are provisional

² Current rate is based on the cumulative total for the 12 months up to and including February 2011 expressed as cases per 100 000

³ Further data are available from the local Medical Officer of Health

Notifiable Disease Surveillance Data by District Health Board February 2011

Disease		Cases ¹ and current rate ² for February 2011 by District Health Board ³																			
		Northland	Waitemata	Auckland	Counties Manukau	Waikato	Lakes	Bay of Plenty	Tairāwhiti	Taranaki	Hawke's Bay	Whanganui	MidCentral	Hutt Valley	Capital and Coast	Wairarapa	Nelson Marlborough	West Coast	Canterbury	South Canterbury	Southern
Campylobacteriosis	Cases	8	48	49	25	61	17	19	3	10	19	3	13	5	31	5	20	0	54	8	60
	Rate	117.6	143.4	136.4	99.7	181.7	174.5	137.1	75.3	210.5	184.8	121.9	131.0	189.2	176.1	161.4	170.9	177.2	173.9	209.5	207.4
Cryptosporidiosis	Cases	1	1	1	1	4	0	1	0	1	0	0	0	5	4	0	2	0	4	0	0
	Rate	25.4	14.7	13.5	6.7	39.2	14.6	8.1	10.8	27.5	27	6.3	10.8	11.1	10.6	14.9	24.6	24.4	34.6	85.9	25.7
Dengue fever	Cases	0	0	2	2	1	1	0	0	0	0	0	0	2	0	0	0	0	0	0	0
	Rate	1.3	0.9	2.7	1	2.7	1.9	1.4	2.2	0.9	0	1.6	0	0	2.1	0	0	0	0.6	1.8	1.3
Gastroenteritis	Cases	0	9	12	5	0	1	0	0	0	0	1	2	3	4	0	0	1	23	2	3
	Rate	1.3	10.8	15.5	6.1	6.3	6.8	5.2	0	11.9	1.9	25.3	23.9	38.9	31.2	7.4	5.8	24.4	12.2	7.2	3.3
Giardiasis	Cases	2	24	53	34	15	4	13	0	3	3	0	3	9	33	0	6	0	4	3	22
	Rate	25.4	47.8	74.4	44.4	52.1	36.1	36.7	32.3	31.1	68.3	31.7	16.7	39.6	56	39.7	38.4	21.4	50	41.2	40.2
Haemophilus influenzae type b	Cases	0	0	0	0	0	0	0	0	0	0	0	0	0	0	0	0	0	0	0	0
	Rate	0.0	0.2	0.0	0.2	0.0	0.0	0.0	0.0	0.0	0.6	1.6	0.0	0.0	0.0	0.0	0.0	0.0	0.0	0.0	0.0
Hepatitis A	Cases	0	1	2	2	2	0	0	0	0	0	0	0	0	0	0	0	0	0	0	0
	Rate	0.6	0.4	1.6	2.2	1.4	1.0	0.0	4.3	0.0	1.9	1.6	1.2	0.7	1.0	0.0	0.0	0.0	1.4	0.0	1.0
Hepatitis B	Cases	0	2	1	0	0	2	0	0	0	0	0	1	0	0	0	0	0	1	0	0
	Rate	0.6	0.7	2.2	1.6	0.5	2.9	0.0	8.6	0.0	1.9	1.6	1.2	1.4	0.7	0.0	0.7	0.0	1.4	0.0	1.0
Hepatitis C	Cases	0	1	1	0	0	0	0	0	0	0	0	2	0	0	0	0	0	0	0	0
	Rate	0.0	0.4	0.4	0.4	0.0	0.0	0.0	0.0	1.8	0.0	0.0	1.2	0.7	1.4	0.0	0.0	0.0	0.6	0.0	0.3
Invasive pneumococcal disease	Cases	1	2	1	3	0	0	0	0	1	2	0	0	0	0	0	0	0	3	0	2
	Rate	11.4	11.0	10.4	21.6	13.2	15.6	15.2	2.2	9.2	17.4	15.8	9.6	13.9	6.9	12.4	3.6	3.1	9.1	7.2	16.5
Lead absorption	Cases	0	11	7	4	0	0	0	0	0	1	0	1	0	0	0	0	1	1	0	2
	Rate	3.2	5.0	4.7	3.1	4.4	0.0	2.4	2.2	5.5	6.4	11.1	4.8	13.2	3.8	7.4	3.6	3.1	4.9	9.0	8.2
Legionellosis	Cases	1	2	0	1	1	0	2	0	1	0	0	0	0	1	1	1	1	10	0	5
	Rate	5.7	4.1	2.9	2.9	1.4	1.0	3.8	0.0	2.7	2.6	0.0	1.8	2.8	1.4	2.5	1.4	6.1	15.0	1.8	7.6
Leptospirosis	Cases	0	0	0	0	0	0	2	0	0	2	3	1	0	0	0	0	0	3	0	0
	Rate	1.3	0.2	0.0	0.2	3.3	0.0	1.9	6.5	0.0	9.0	15.8	6.6	0.0	0.0	5.0	0.7	15.3	1.0	0.0	1.3
Listeriosis	Cases	0	0	0	0	1	0	1	0	0	0	0	0	1	0	0	0	0	0	0	0
	Rate	0.6	0.0	0.9	0.6	0.3	0.0	0.5	0.0	0.9	0.0	1.6	1.2	1.4	0.3	0.0	0.0	3.1	0.0	0.0	0.3
Malaria	Cases	0	1	2	1	0	0	0	0	0	0	0	0	0	0	0	0	0	0	0	0
	Rate	0.0	0.7	2.9	1.6	0.0	0.0	1.0	0.0	0.9	0.0	0.0	0.0	0.0	0.7	0.0	2.9	0.0	1.0	0.0	0.7
Measles	Cases	0	5	2	6	0	0	0	0	0	0	0	0	1	0	0	0	0	6	0	0
	Rate	19.7	2.2	1.8	2.0	0.0	1.0	0.5	2.2	0.0	0.6	0.0	0.6	0.7	1.0	2.5	0.0	3.1	1.2	0.0	0.0
Meningococcal disease	Cases	0	0	0	2	0	1	0	0	0	1	0	0	0	0	0	0	0	2	0	0
	Rate	3.2	2.0	1.3	2.6	1.9	3.9	3.3	2.2	0.9	5.2	1.6	3.0	4.9	1.4	0.0	0.7	3.1	1.6	0.0	2.3
Mumps	Cases	0	1	3	3	0	0	0	0	0	0	0	0	0	0	0	0	0	1	0	0
	Rate	1.3	1.3	0.7	1.4	0.3	0.0	0.0	0.0	3.7	0.0	0.0	0.0	2.8	1.0	5.0	0.7	0.0	1.4	0.0	0.3
Paratyphoid fever	Cases	0	0	2	0	0	0	0	0	0	0	0	1	0	0	0	0	0	0	0	0
	Rate	0.0	0.0	1.8	0.4	0.3	1.0	0.0	0.0	0.0	0.0	0.0	0.6	0.0	1.4	0.0	0.0	3.1	0.0	0.0	0.0
Pertussis	Cases	0	9	10	3	6	1	1	0	5	4	0	1	8	19	0	1	1	8	1	6
	Rate	3.2	12.3	20.4	13.2	21.4	4.9	18.1	15.1	26.5	16.1	6.3	19.7	21.6	31.2	12.4	19.6	45.8	29.3	12.5	17.1
Rheumatic fever	Cases	1	1	0	5	0	0	0	0	0	1	0	0	1	1	0	0	0	2	0	0
	Rate	10.2	1.9	1.6	12.0	4.9	1.9	3.3	15.1	1.8	5.2	3.2	2.4	5.6	3.4	5.0	0.0	0.0	0.8	0.0	0.0
Rickettsial disease	Cases	0	0	0	0	0	0	0	0	1	0	0	0	0	0	0	0	0	0	0	0
	Rate	0.0	0.6	0.2	0.2	1.9	0.0	0.0	0.0	0.9	0.0	0.0	0.0	0.0	0.0	0.0	0.0	0.0	0.0	0.0	0.0
Rubella	Cases	0	0	0	3	0	0	0	0	0	0	0	0	0	0	0	0	0	0	0	0
	Rate	0.6	0.2	0.2	0.6	0.0	0.0	0.0	0.0	0.0	0.0	0.0	0.0	0.7	0.3	0.0	0.0	0.0	0.0	0.0	0.0
Salmonellosis	Cases	7	13	12	8	12	2	3	3	0	3	0	1	8	8	1	5	0	12	4	20
	Rate	26.1	20.1	22.2	16.5	25	24.4	23.8	30.1	22.9	25.8	14.2	16.1	22.3	17.2	29.8	34.8	24.4	30.7	64.4	71.6
Shigellosis	Cases	0	4	2	1	1	0	1	0	0	0	0	0	0	1	0	0	0	0	0	1
	Rate	4.4	3.9	3.6	3.7	3.3	0.0	3.3	0.0	0.0	3.2	0.0	0.0	1.4	1.7	0.0	1.4	0.0	2.4	1.8	1.3
Tuberculosis disease	Cases	2	3	5	2	1	0	1	0	0	1	0	0	4	4	0	0	0	1	0	0
	Rate	3.8	5.0	14.9	11.2	6.0	1.9	3.3	8.6	0.9	9.0	3.2	4.8	11.1	11.7	2.5	1.4	3.1	5.3	0.0	3.0
Typhoid fever	Cases	0	1	0	0	0	0	0	0	0	0	0	0	0	0	0	0	0	1	0	0
	Rate	0.6	0.6	1.1	0.8	0.3	0.0	1.9	0.0	0.0	0.6	0.0	0.0	0.0	0.7	0.0	0.0	0.0	0.4	0.0	0.0
VTEC/STEC infection	Cases	1	0	0	7	4	1	3	0	1	0	0	0	1	2	0	0	0	3	1	0
	Rate	2.5	2.0	2.0	3.1	8.8	10.7	5.2	17.2	6.4	5.8	3.2	0.6	0.7	0.7	7.4	0.0	3.1	4.3	3.6	1.6
Yersiniosis	Cases	0	9	7	7	1	0	1	1	0	2	1	0	3	12	0	2	0	6	0	2
	Rate	4.4	11.0	8.7	6.1	9.3	8.8	8.1	12.9	17.4	10.9	7.9	7.8	14.6	21.3	7.4	7.2	9.2	9.4	14.3	3.6

¹ These data are provisional

² Current rate is based on the cumulative total for the 12 months up to and including February 2011 expressed as cases per 100 000

³ Further data are available from the local Medical Officer of Health

Notifiable Disease Surveillance Data for the 12 months ending February-2011 by District Health Board

Disease	Cases for the 12 months ending February 2011 ^{1 2} by District Health Board																				
	Total	Northland	Waitemata	Auckland	Counties Manukau	Waikato	Lakes	Bay of Plenty	Tairāwhiti	Taranaki	Hawke's Bay	Whanganui	MidCentral	Hutt Valley	Capital and Coast	Wairarapa	Nelson Marlborough	West Coast	Canterbury	South Canterbury	Southern
Campylobacteriosis	6809	185	770	614	489	662	179	288	35	230	287	77	219	272	513	65	236	58	884	117	629
Cryptosporidiosis	884	40	79	61	33	143	15	17	5	30	42	4	18	16	31	6	34	8	176	48	78
Dengue fever	56	2	5	12	5	10	2	3	1	1	0	1	0	0	6	0	0	0	3	1	4
Gastroenteritis	515	2	58	70	30	23	7	11	0	13	3	16	40	56	91	3	8	8	62	4	10
Giardiasis	2052	40	257	335	218	190	37	77	15	34	106	20	28	57	163	16	53	7	254	23	122
Haemophilus influenzae type b	4	0	1	0	1	0	0	0	0	0	1	1	0	0	0	0	0	0	0	0	0
Hepatitis A	49	1	2	7	11	5	1	0	2	0	3	1	2	1	3	0	0	0	7	0	3
Hepatitis B	53	1	4	10	8	2	3	0	4	0	3	1	2	2	2	0	1	0	7	0	3
Hepatitis C	19	0	2	2	2	0	0	0	0	2	0	0	2	1	4	0	0	0	3	0	1
Invasive pneumococcal disease	541	18	59	47	106	48	16	32	1	10	27	10	16	20	20	5	5	1	46	4	50
Lead absorption	215	5	27	21	15	16	0	5	1	6	10	7	8	19	11	3	5	1	25	5	25
Legionellosis	195	9	22	13	14	5	1	8	0	3	4	0	3	4	4	1	2	2	76	1	23
Leptospirosis	75	2	1	0	1	12	0	4	3	0	14	10	11	0	0	2	1	5	5	0	4
Listeriosis	19	1	0	4	3	1	0	1	0	1	0	1	2	2	1	0	0	1	0	0	1
Malaria	41	0	4	13	8	0	0	2	0	1	0	0	0	0	2	0	4	0	5	0	2
Measles	78	31	12	8	10	0	1	1	1	0	1	0	1	1	3	1	0	1	6	0	0
Meningococcal disease	97	5	11	6	13	7	4	7	1	1	8	1	5	7	4	0	1	1	8	0	7
Mumps	42	2	7	3	7	1	0	0	0	4	0	0	0	4	3	2	1	0	7	0	1
Paratyphoid fever	18	0	0	8	2	1	1	0	0	0	0	0	1	0	4	0	0	1	0	0	0
Pertussis	824	5	66	92	65	78	5	38	7	29	25	4	33	31	91	5	27	15	149	7	52
Rheumatic fever	166	16	10	7	59	18	2	7	7	2	8	2	4	8	10	2	0	0	4	0	0
Rickettsial disease	13	0	3	1	1	7	0	0	0	1	0	0	0	0	0	0	0	0	0	0	0
Rubella	8	1	1	1	3	0	0	0	0	0	0	0	0	1	1	0	0	0	0	0	0
Salmonellosis	1170	41	108	100	81	91	25	50	14	25	40	9	27	32	50	12	48	8	156	36	217
Shigellosis	112	7	21	16	18	12	0	7	0	0	5	0	0	2	5	0	2	0	12	1	4
Tuberculosis disease	305	6	27	67	55	22	2	7	4	1	14	2	8	16	34	1	2	1	27	0	9
Typhoid fever	23	1	3	5	4	1	0	4	0	0	1	0	0	0	2	0	0	0	2	0	0
VTEC/STEC infection	156	4	11	9	15	32	11	11	8	7	9	2	1	1	2	3	0	1	22	2	5
Yersiniosis	421	7	59	39	30	34	9	17	6	19	17	5	13	21	62	3	10	3	48	8	11
Total	14960	432	1630	1571	1307	1421	321	597	115	420	628	174	444	574	1122	130	440	122	1994	257	1261

¹ These data are provisional

² Further data are available from the local Medical Officer of Health

National Notifiable Disease Surveillance Data February 2011

Disease	Current Year - 2011 ¹			Previous Year - 2010		
	February 2011 Cases	Cumulative total since 1 January	Current 12 Month Rate ²	February 2010 Cases	Cumulative total since 1 January	Current 12 Month Rate ²
Campylobacteriosis	458	1007	155.9	704	1544	170.0
Cryptosporidiosis	25	56	20.2	58	126	20.8
Dengue fever	8	11	1.3	6	6	2.2
Gastroenteritis ³	66	107	11.8	41	83	16.8
Giardiasis	231	403	47.0	186	336	39.1
Haemophilus influenzae type b	0	0	0.1	1	4	0.3
Hepatitis A	7	11	1.1	5	8	1.0
Hepatitis B ⁴	7	10	1.2	4	8	1.2
Hepatitis C ⁴	4	4	0.4	1	2	0.6
Invasive pneumococcal disease	15	44	12.4	11	38	15.3
Lead absorption	28	41	4.9	19	27	6.0
Legionellosis	27	44	4.5	12	24	1.8
Leptospirosis	11	14	1.7	10	20	1.9
Listeriosis	3	6	0.4	6	10	0.8
Malaria	4	10	0.9	3	13	1.2
Measles	20	30	1.8	0	0	5.4
Meningococcal disease	6	10	2.2	3	10	2.9
Mumps	8	9	1.0	2	8	1.6
Paratyphoid fever	3	3	0.4	3	4	0.6
Pertussis	84	140	18.9	95	189	31.7
Rheumatic fever	12	18	3.8	11	20	3.3
Rickettsial disease	1	1	0.3	1	2	0.2
Rubella	3	4	0.2	0	0	0.1
Salmonellosis	122	247	26.8	124	223	24.8
Shigellosis	11	19	2.6	7	12	2.5
Tuberculosis disease	24	54	7.0	26	56	7.0
Typhoid fever	2	5	0.5	5	13	0.7
VTEC/STEC infection	24	45	3.6	18	27	3.0
Yersiniosis	54	92	9.6	31	77	9.1

¹ These data are provisional

² Rate is based on the cumulative total for the current year (12 months up to and including February 2011) or the previous year (12 months up to and including February 2010), expressed as cases per 100 000

³ Cases of gastroenteritis from a common source or foodborne intoxication

⁴ Only acute cases of this disease are currently notifiable

Other notifiable infectious disease reported in February: Diarrhoeic shellfish poisoning (1) , Hepatitis NOS (1) , Hydatid disease (2) , Ross River virus infection (1)