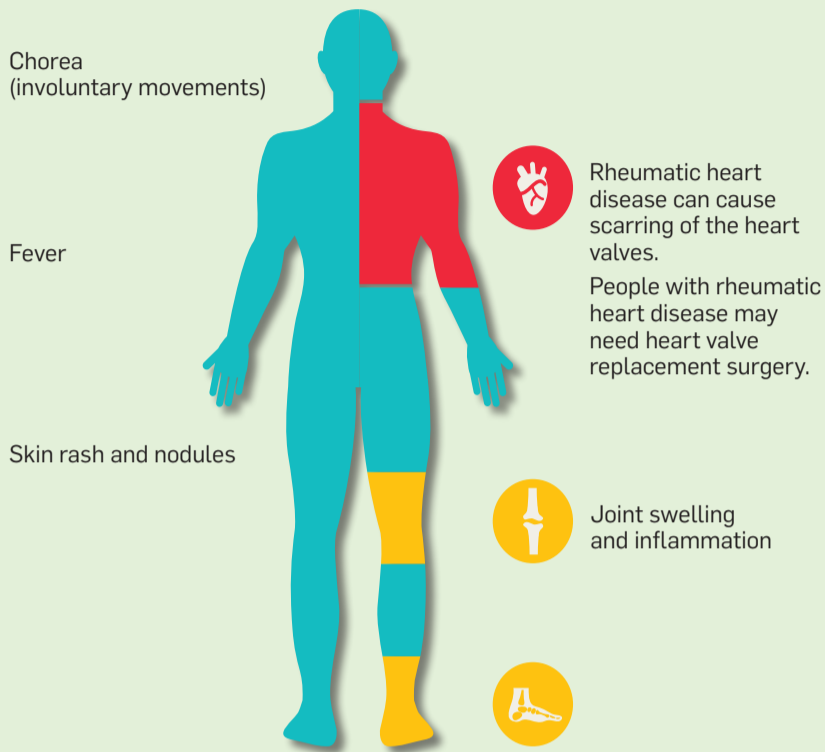
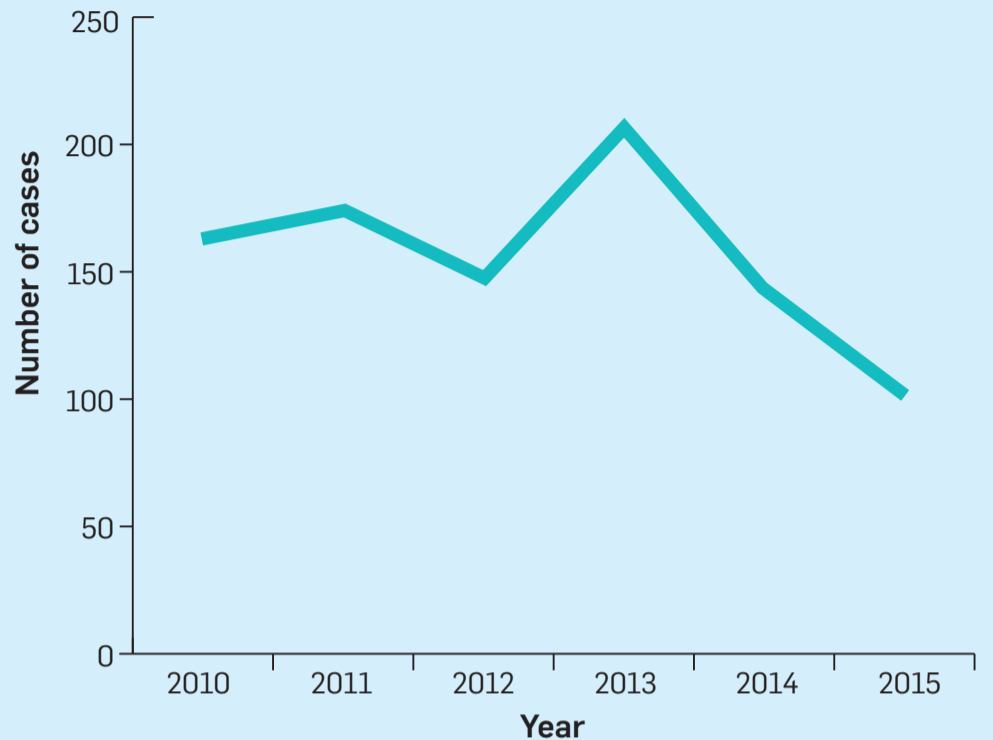


# Rheumatic Fever in New Zealand

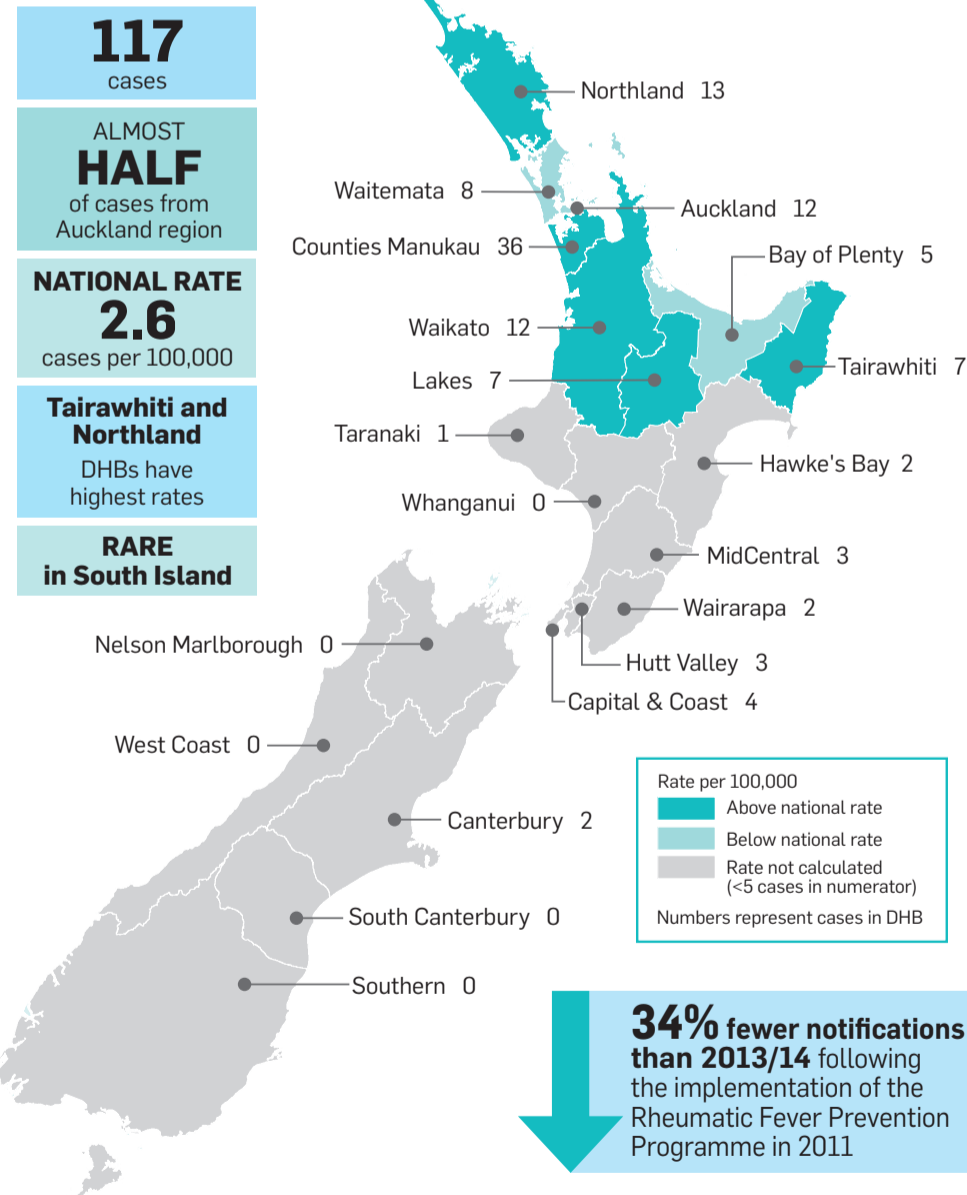
**RHEUMATIC FEVER** can develop after a 'strep throat' caused by a group A streptococcus bacteria and can cause:



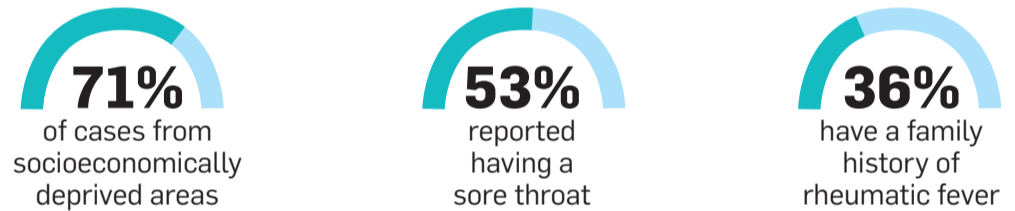
Rheumatic fever cases 2010–2015



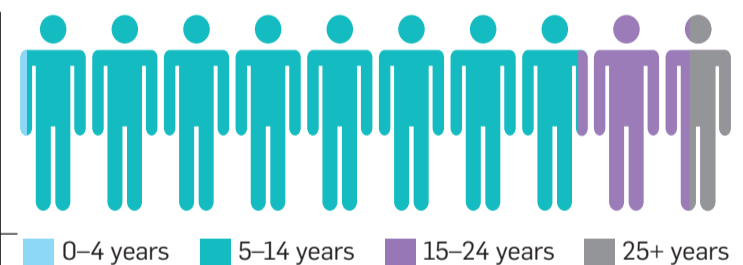
## CASES AND RATES BY DISTRICT HEALTH BOARD



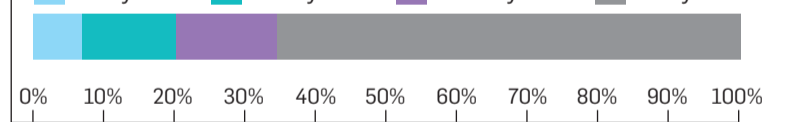
## RISK FACTORS AND VULNERABLE GROUPS



### PERCENTAGE OF rheumatic fever cases BY AGE GROUP



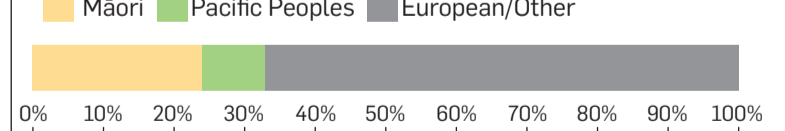
### PERCENTAGE OF New Zealand population BY AGE GROUP



### PERCENTAGE OF rheumatic fever cases BY ETHNIC GROUP aged 5-14 years



### PERCENTAGE OF New Zealand population BY ETHNIC GROUP aged 5-14 years



KEY MESSAGES

Thorough approaches are needed to strengthen:

PRIMARY CARE **SORE THROAT** MANAGEMENT

timely HOSPITAL admissions

appropriate management AND FOLLOW UP CARE

increased support FOR FAMILIES AT RISK

Secondary prophylaxis registers to prevent rheumatic heart disease



For full report please visit [www.surv.esr.cri.nz](http://www.surv.esr.cri.nz)