

## MONTHLY NOTIFIABLE DISEASE SURVEILLANCE REPORT

Data contained within this monthly report is based on information recorded on EpiSurv by public health service staff up until 5 August 2010. As this information may be updated over time, the results should be regarded as provisional only.

### Table of contents

1. Key notifiable disease trends	1
2. Outbreaks	3
3. Deaths from notifiable diseases	3
4. Trends in selected diseases to July 2010	4
5. Data tables	5

### 1. Key notifiable disease trends

- *Campylobacteriosis*: 442 cases of campylobacteriosis were notified in July 2010 compared to 416 cases notified in the same month of the previous year. Three hundred and seventy cases were laboratory-confirmed. For the 12-month period ending 31 July 2010, the highest incidence rates were reported in Hutt Valley (278.9 per 100 000 population, 398 cases), Taranaki (258.7 per 100 000, 280 cases), and Capital and Coast (247.5 per 100 000, 713 cases) DHBs compared to a national rate of 176.0 per 100 000.
- *Giardiasis*: 161 cases of giardiasis were notified in July 2010 compared to 119 cases notified in the same month of the previous year. The highest number of cases was reported in Canterbury DHB (33 cases), followed by Auckland DHB (21 cases). Among the cases where risk information was recorded, 49.0% (25/51) had contact with other symptomatic people, 35.7% (15/42) had consumed food from a food premise, 31.6% (12/38) had consumed untreated water, 25.8% (16/62) had been overseas during the incubation period, 20.0% (10/50) had recreational contact with water, and 17.6% (9/51) had contact with farm animals during the incubation period. Seven *Giardia* outbreaks involving 30 cases were reported in July.
- *Legionellosis*: 22 cases of legionellosis were notified in July 2010 (4 confirmed, 4 probable and 14 under investigation) compared to one case notified in the same month of the previous year. The highest number of cases were from Counties Manukau (6 cases), Waitemata and Auckland (5 cases each) DHBs. Cases were aged between 20-29 years and over 70 years, with the highest number of cases in the 50-59 years age group (6 cases). Sixteen cases were hospitalised. The *Legionella* species was identified in 14 cases; *Legionella dumoffii* (3 cases), *L. gormanii* (2 cases), *L. longbeachae*, *L. longbeachae* serogroup 1, *L. longbeachae* serogroup 1 or 2, *L. pneumophila* serogroup 12, *L. pneumophila* serogroup 4 or 10, *L. pneumophila* serogroup 4 or 15, *L. pneumophila* serogroup 6, *L. pneumophila* serogroup 1 and *Legionella* species (1 case each).
- *Meningococcal disease*: Based on the earliest date available<sup>1</sup>, 14 cases of meningococcal disease were notified during July 2010, 12 (85.7%) of which were laboratory-confirmed. In comparison, 10 cases were notified in the previous month and 23 during the same month last year. For the 12-month period ending 31 July 2010, the highest incidence rate was reported in MidCentral DHB (7.2 per 100 000 population, 12 cases), followed by Tairāwhiti (6.5 per 100 000, 3 cases) and Northland (5.1

<sup>1</sup> The 'earliest' date refers to the earliest recorded date for the case (onset or hospitalisation date rather than report date, if available). 'Earliest' date, as opposed to 'report date' alone, is used throughout the analysis of meningococcal disease notification data.

per 100 000, 8 cases) DHBs. The highest age-specific rate was in infants aged less than one year (46.0 per 100 000 population, 29 cases), followed by those in the 1-4 years age group (14.8 per 100 000, 36 cases).

- *Rickettsial disease*: Seven cases of rickettsial disease were notified in July 2010 (5 confirmed, 2 under investigation). Six cases were notified with murine typhus and the remaining case was for rickettsial disease that was not further specified. The cases were from Waikato (4 cases), Waitemata (2 cases), and Auckland (1 case) DHBs. Five cases were female and two were male. The cases were aged between 15-19 years and over 70 years, with five cases in the 40-49 years age group. Three of the cases had not travelled overseas during the incubation period and travel history of the remaining four cases is unknown.
- *Shigellosis*: 18 cases of shigellosis were notified in July 2010 compared to five in the same month of the previous year. Two cases were hospitalised. The highest number of cases were reported in Northland DHB (4 cases), followed by Waitemata and Waikato (3 cases each) DHBs. Cases were aged between 1-4 years and 60-69 years, with the highest number of notifications in the 40-49 years age group (5 cases). The serotype involved was identified for 15 cases: *Shigella flexneri* 2b (5 cases), *S. sonnei* biotype a (5 cases), *S. sonnei* biotype g (2 cases), *S. boydii* 13 (1 case), *S. flexneri* 1 (1 case), and *S. flexneri* 2a (1 case). Two cases from Waikato DHB were part of an outbreak. Five of the cases reported overseas travel during the incubation period to Fiji (4 cases) and Bangladesh (1 case).
- *Salmonellosis*: 77 cases of salmonellosis were notified in July 2010 compared to 62 cases notified in the same month of the previous year (Figure 2). The highest numbers of cases were reported from Waitemata and Auckland (15 cases each) DHBs, followed by Canterbury (9 cases), Waikato and Otago (7 cases each) DHBs. Of the cases reported, 36 (47%) were from the Auckland region. The highest number of cases were in the 1-4 years (20 cases), 20-29 years (13 cases), and 50-59 years (11 cases) age groups. Twelve of reported cases were hospitalised. The serotype involved was identified in 48 of the cases. The dominant serotypes were *Salmonella* Typhimurium phage type RDNC-May 06 (7), *S. Stanley*, *Salmonella* subspecies I 4,5,12 : i : -, and *S. Typhimurium* phage type 135 (4 each). Three of the cases were part of the *Salmonella* Typhimurium phage type RDNC-May 06 outbreak reported from the Auckland region in July.
- *VTEC/STEC infection*: 15 cases of VTEC/STEC infection were notified in July 2010, compared to three cases notified in the same month of the previous year. The cases were aged from less than 1 year to 50-59 years, with the highest number of cases in children under 5 years (13 cases). One case was hospitalised. *Escherichia coli* O157:H7 was isolated in eight cases. Among the cases for which risk factor information was recorded, 100% (5/5) had contact with animals, 71.4% (5/7) had contact with children in nappies, 62.5% (5/8) had contact with another person with similar symptoms, and 20.0% (1/5) had contact with manure.

## 2. Outbreaks

Completed outbreak reports: 22 outbreak reports were entered into EpiSurv and completed during July 2010 (Table 1).

**Table 1: Summary of completed outbreaks reported to ESR during July 2010**

Organism/Toxin/Illness	Health District(s) where exposure occurred	Number of outbreaks	Total number of cases
<i>Bordetella pertussis</i>	West Coast	1	4
<i>Campylobacter</i>	Waikato	1	4
<i>Escherichia coli</i> O157:H7	Tauranga	1	2
Gastroenteritis	Auckland, Waikato, Wellington, Canterbury	7	49
<i>Giardia</i>	Auckland, South Canterbury	4	19
Norovirus	Taupo, Canterbury	7	143
<i>Salmonella</i>	Auckland	1	2
<b>Total</b>		<b>22</b>	<b>223</b>

Interim outbreak reports: 29 interim outbreaks have been reported in July 2010 (Table 2). The status of the outbreak and cases involved are subject to change, as more data becomes available.

**Table 2: Summary of interim outbreaks reported to ESR during July 2010**

Organism/Toxin/Illness	Health District(s) where exposure occurred	Number of outbreaks	Total number of cases
Chemical poisoning	Canterbury	1	2
Gastroenteritis	Auckland, Waikato, Manawatu, Wellington, Otago, Southland	14	100
<i>Giardia</i>	Auckland, Waikato	3	11
Histamine (scombroid) fish poisoning	Auckland	1	3
Murine Typhus	Waikato	1	2
Norovirus	Auckland, Wanganui	2	36
Pandemic (H1N1) 09	Nelson Marlborough, West Coast	2	28
Rotavirus	Wanganui, Manawatu, Hutt	3	39
<i>Salmonella</i>	Auckland	1	3
<i>Shigella</i>	Waikato	1	2
<b>Total</b>		<b>29</b>	<b>226</b>

## 3. Deaths from notifiable diseases

Seven deaths were reported for the month of July from invasive pneumococcal disease, listeriosis-perinatal and non seasonal influenza A (H1N1) (Table 3).

**Table 3: Summary of deaths from notifiable diseases reported to ESR during July 2010**

Disease	District Health Board	Age group (years)
Invasive pneumococcal disease	Counties Manukau	70+
Invasive pneumococcal disease	Counties Manukau	70+
Invasive pneumococcal disease	Waikato	70+
Invasive pneumococcal disease	Capital and Coast	70+
Invasive pneumococcal disease	Canterbury	60-69
Listeriosis - perinatal	West Coast	N/A
Non seasonal influenza A (H1N1)	Bay of Plenty	40-49

#### 4. Trends in selected diseases to July 2010

Figure 1: Giardiasis notifications by month by year, January 2004 – July 2010

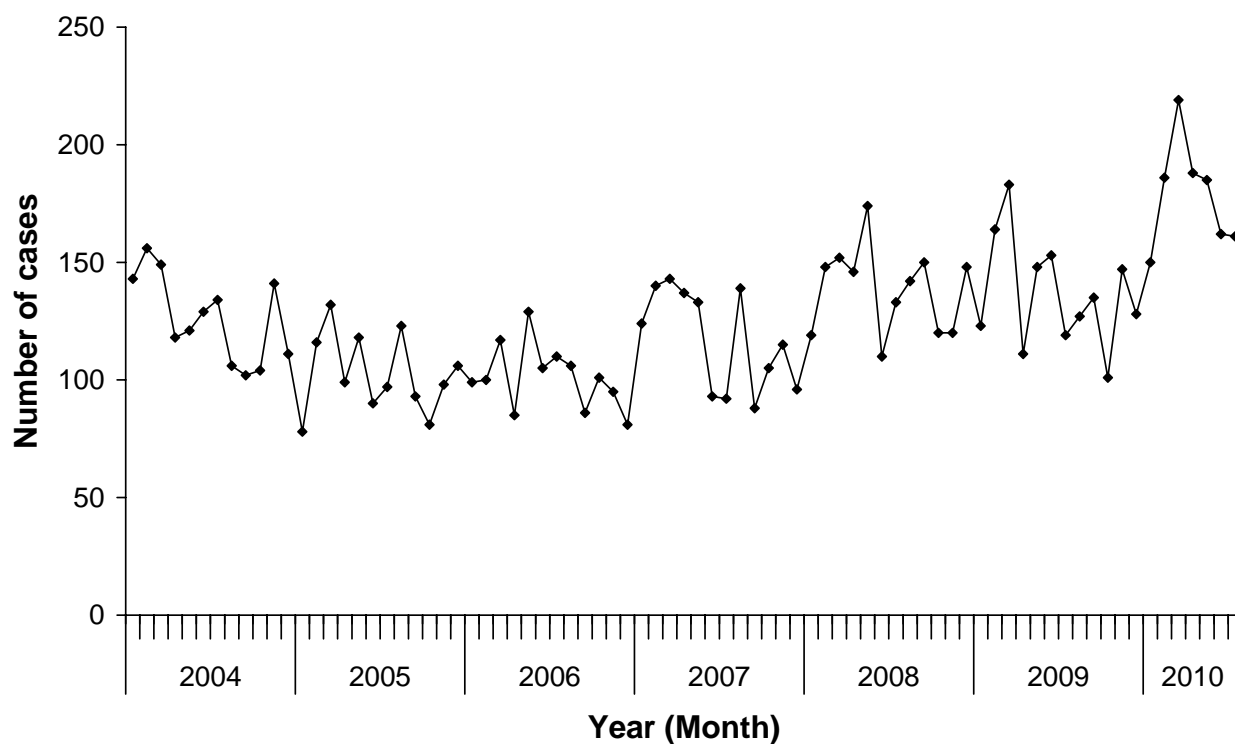
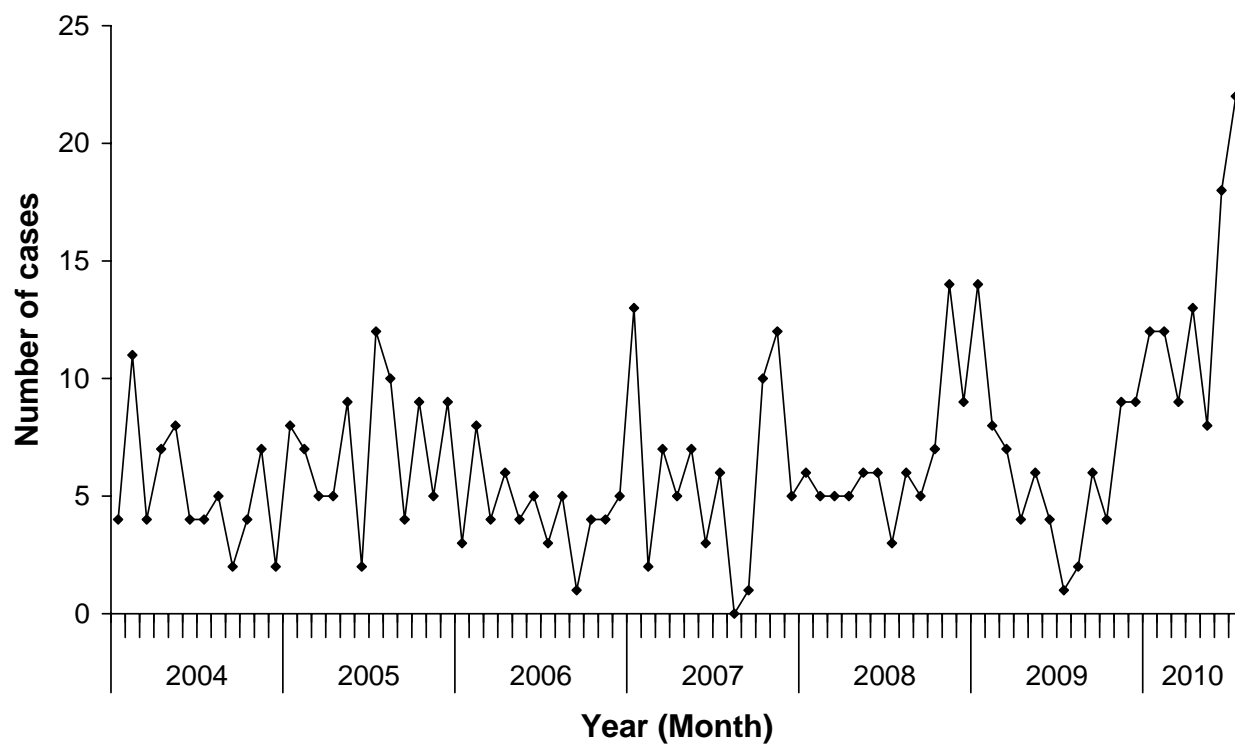


Figure 2: Legionellosis notifications by month by year, January 2004 – July 2010



## 5. Data tables

National Notifiable Disease Surveillance Data July 2010

Disease	Current Year - 2010 <sup>1</sup>			Previous Year - 2009		
	July 2010 Cases	Cumulative total since 1 January	Current 12 Month Rate <sup>2</sup>	July 2009 Cases	Cumulative total since 1 January	Current 12 Month Rate <sup>2</sup>
Campylobacteriosis	442	3973	176.0	416	3553	163.3
Cryptosporidiosis	28	450	22.1	55	352	21.4
Dengue fever	3	25	1.1	5	118	3.9
Gastroenteritis <sup>3</sup>	41	266	14.6	56	350	15.8
Giardiasis	161	1251	43.8	119	1001	38.9
Haemophilus influenzae type b	0	7	0.3	0	5	0.2
Hazardous substances injury	2	8	0.4	0	1	0.2
Hepatitis A	4	37	1.3	4	23	1.3
Hepatitis B <sup>4</sup>	5	30	1.2	11	34	1.0
Hepatitis C <sup>4</sup>	2	7	0.3	5	24	0.8
Invasive pneumococcal disease <sup>5</sup>	83	303	14.0	113	395	12.1
Lead absorption	13	113	4.7	31	182	6.7
Legionellosis	22	94	2.9	1	44	1.9
Leptospirosis	8	56	2.2	3	32	2.0
Listeriosis	3	19	0.7	3	15	0.6
Malaria	5	30	1.2	5	30	1.2
Measles	0	40	3.7	87	127	3.0
Meningococcal disease <sup>6</sup>	12	60	2.9	22	67	2.9
Mumps	10	35	1.6	5	31	1.2
Non seasonal influenza A (H1N1) <sup>7</sup>	385	428	18.4	2100	3304	76.6
Paratyphoid fever	2	12	0.5	2	15	0.6
Pertussis	73	546	27.5	104	757	23.5
Rheumatic fever	16	103	3.5	10	92	3.5
Rickettsial disease	7	11	0.3	0	1	0.2
Rubella	0	1	0.0	0	4	0.2
Salmonellosis	77	639	24.0	62	731	28.7
Shigellosis	18	81	2.8	5	79	2.9
Tuberculosis disease	33	194	7.5	27	172	6.7
Typhoid fever	3	23	0.7	1	28	0.9
VTEC/STEC infection	15	93	3.3	3	92	3.1
Yersiniosis	28	220	9.1	21	257	10.2

<sup>1</sup> These data are provisional

<sup>2</sup> Rate is based on the cumulative total for the current year (12 months up to and including July 2010) or the previous year (12 months up to and including July 2009), expressed as cases per 100 000

<sup>3</sup> Cases of gastroenteritis from a common source or foodborne intoxication

<sup>4</sup> Only acute cases of this disease are currently notifiable

<sup>5</sup> Invasive pneumococcal disease became a notifiable disease on the 17th October 2008

<sup>6</sup> These totals and rates are derived from the EpiSurv report date as opposed to the earliest available date used in the meningococcal disease section of this report

<sup>7</sup> Non-seasonal influenza (capable of transmission between human beings) became an infectious notifiable disease on 29 April 2009.

Other notifiable infectious disease reported in July: Cholera (1) , Hydatid disease (2)

Notifiable Disease Surveillance Data by District Health Board July 2010

		Cases <sup>1</sup> and current rate <sup>2</sup> for July 2010 by District Health Board <sup>3</sup>																				
Disease		Northland	Waitemata	Auckland	Counties Manukau	Waikato	Lakes	Bay of Plenty	Tairāwhiti	Taranaki	Hawke's Bay	Whanganui	MidCentral	Hutt Valley	Capital and Coast	Wairarapa	Nelson Marlborough	West Coast	Canterbury	South Canterbury	Otago	Southland
Campylobacteriosis	Cases	13	58	49	35	34	6	16	5	8	28	10	13	20	48	8	14	2	40	8	19	8
	Rate	125.8	176.2	170.5	135.1	190.0	198.4	164.6	114.7	258.7	222.9	209.0	160.9	278.9	247.5	225.2	138.9	171.8	144.4	201.6	154.4	162.8
Cryptosporidiosis	Cases	2	2	5	2	4	0	2	0	0	2	0	0	0	0	1	0	0	8	0	0	0
	Rate	27.0	15.0	14.9	9.5	33.6	10.8	7.7	13.0	21.2	24.0	14.3	14.5	9.1	24.3	25.0	28.5	67.5	44.0	52.2	21.8	24.1
Dengue fever	Cases	0	0	1	1	0	0	1	0	0	0	0	0	0	0	0	0	0	0	0	0	0
	Rate	0.6	1.3	2.5	1.0	1.7	1.0	1.0	0.0	0.0	0.6	0.0	0.6	0.7	2.4	0.0	0.0	0.0	0.6	0.0	0.0	0.0
Gastroenteritis	Cases	0	2	3	5	0	1	0	0	0	0	5	5	7	8	0	0	0	4	0	0	1
	Rate	3.2	13.1	19.8	7.5	6.7	7.9	2.9	0.0	5.5	7.8	22.2	38.6	32.9	26.0	7.5	5.8	273.1	10.4	1.8	9.6	2.7
Giardiasis	Cases	2	15	21	15	13	2	4	6	2	15	1	8	1	8	1	4	1	33	2	2	5
	Rate	34.7	42.4	60.1	40.5	47.8	50.1	31.8	32.5	35.1	61.1	53.8	17.5	31.5	56.2	50.0	38.0	33.8	50.2	32.4	30.8	28.6
Haemophilus influenzae type b	Cases	0	0	0	0	0	0	0	0	0	0	0	0	0	0	0	0	0	0	0	0	0
	Rate	0.0	0.4	0.0	0.6	1.1	0.0	0.0	0.0	0.0	0.0	1.6	0.6	0.0	0.0	0.0	0.0	0.0	0.2	0.0	0.0	0.0
Hazardous substances injury	Cases	0	0	0	0	0	0	0	0	0	0	0	0	0	2	0	0	0	0	0	0	0
	Rate	0.6	0.9	0.7	0.0	0.0	0.0	0.0	0.0	0.0	3.2	0.0	0.6	0.0	1.0	0.0	0.0	0.0	0.0	0.0	0.0	0.0
Hepatitis A	Cases	0	1	1	1	0	0	0	0	0	0	0	0	0	0	0	0	0	1	0	0	0
	Rate	0.6	0.9	2.5	2.3	1.4	1.0	1.0	0.0	0.0	1.3	0.0	2.4	1.4	0.7	0.0	0.0	0.0	1.6	0.0	1.6	0.9
Hepatitis B	Cases	1	0	0	2	0	0	0	0	0	0	0	0	1	0	0	0	0	1	0	0	0
	Rate	2.6	0.4	1.8	1.9	0.6	2.0	1.0	4.3	0.0	1.3	1.6	0.6	0.7	1.0	5.0	1.5	0.0	1.0	0.0	1.6	0.0
Hepatitis C	Cases	0	0	1	0	0	0	0	0	0	0	0	0	0	1	0	0	0	0	0	0	0
	Rate	0.0	0.0	0.5	0.4	0.0	0.0	0.0	0.0	3.7	0.0	0.0	0.0	1.4	0.3	5.0	0.0	0.0	0.0	1.8	0.5	0.0
Invasive pneumococcal disease <sup>4</sup>	Cases	4	9	6	22	7	3	3	0	2	4	0	1	3	3	0	0	0	10	0	4	2
	Rate	16.7	12.1	10.1	22.4	14.7	25.5	20.7	10.8	16.6	13.6	19.0	10.2	14.7	9.7	17.5	6.6	0.0	10.0	1.8	15.9	18.8
Lead absorption	Cases	0	0	1	1	3	0	1	0	0	1	0	0	1	2	0	0	0	2	0	1	0
	Rate	3.2	2.5	3.2	2.7	5.0	5.9	3.4	10.8	2.8	3.9	7.9	6.6	11.2	4.5	2.5	7.3	0.0	6.2	16.2	8.0	1.8
Legionellosis	Cases	0	5	5	6	0	0	0	0	0	0	0	0	2	1	0	0	0	2	0	0	1
	Rate	7.1	4.2	3.6	3.1	0.6	0.0	3.9	2.2	1.8	2.6	0.0	1.2	2.8	0.7	0.0	0.0	12.3	4.6	3.6	1.1	3.6
Leptospirosis	Cases	0	0	0	0	2	0	0	0	0	3	1	0	0	0	0	0	1	0	0	1	0
	Rate	1.3	0.2	0.2	0.2	6.7	2.0	1.9	0.0	3.7	4.5	9.5	7.8	0.0	0.3	0.0	2.2	21.5	2.0	1.8	0.5	4.5
Listeriosis	Cases	1	0	0	0	0	0	0	0	0	0	0	0	0	1	0	0	1	0	0	0	0
	Rate	0.6	0.4	0.9	0.8	1.4	0.0	1.4	4.3	0.9	0.0	0.0	2.4	0.7	0.3	0.0	0.0	3.1	0.0	0.0	1.6	0.0
Malaria	Cases	0	0	2	2	0	0	0	0	0	0	0	0	0	0	0	0	0	0	0	1	0
	Rate	0.0	0.9	2.3	2.9	0.6	0.0	1.4	0.0	0.9	0.6	0.0	0.0	0.0	1.0	2.5	1.5	0.0	1.2	0.0	0.5	0.9
Measles	Cases	0	0	0	0	0	0	0	0	0	0	0	0	0	0	0	0	0	0	0	0	0
	Rate	23.1	1.7	1.4	0.4	0.0	1.0	1.0	0.0	0.0	0.6	0.0	1.2	0.0	0.7	0.0	1.5	24.5	17.3	0.0	0.5	1.8
Meningococcal disease <sup>5</sup>	Cases	1	1	1	3	1	1	1	0	0	0	0	0	2	1	0	0	0	0	0	0	0
	Rate	5.1	1.1	2.5	4.2	2.2	2.0	4.3	6.5	2.8	4.5	1.6	7.2	4.2	2.4	2.5	0.0	3.1	2.6	0.0	2.1	3.6
Mumps	Cases	1	4	0	1	0	0	0	0	0	0	0	0	1	0	1	0	0	0	0	2	0
	Rate	1.9	1.5	0.7	1.2	0.6	1.0	1.0	0.0	4.6	0.0	0.0	0.0	2.8	2.8	7.5	1.5	3.1	2.8	1.8	2.1	0.0
Non seasonal influenza A (H1N1) <sup>6</sup>	Cases	7	49	44	58	62	29	34	1	12	5	1	4	1	13	0	8	0	32	22	3	0
	Rate	13.5	15.9	17.3	19.1	25.6	34.4	26.5	64.9	16.6	7.1	9.5	5.4	2.8	18.7	12.5	8.8	15.3	17.3	93.6	17.5	9.8
Paratyphoid fever	Cases	0	0	2	0	0	0	0	0	0	0	0	0	0	0	0	0	0	0	0	0	0
	Rate	0.0	0.6	1.1	0.4	0.6	2.0	0.0	0.0	0.0	0.0	0.0	0.0	0.7	2.1	0.0	0.0	0.0	0.2	0.0	0.0	0.0
Pertussis	Cases	0	4	6	17	6	0	4	1	1	1	0	0	0	2	3	6	3	14	3	1	1
	Rate	6.4	18.5	12.6	17.0	56.7	11.8	25.0	26.0	44.3	12.3	11.1	20.5	31.5	44.8	35.0	24.9	52.2	51.4	37.8	8.5	17.0
Rheumatic fever	Cases	1	1	1	3	1	0	2	3	0	1	0	1	1	1	0	0	0	0	0	0	0
	Rate	9.6	1.3	2.5	9.8	6.9	2.0	3.9	30.3	0.9	4.5	1.6	1.2	1.4	2.4	2.5	0.0	0.0	0.2	0.0	0.0	0.0
Rickettsial disease	Cases	0	2	1	0	4	0	0	0	0	0	0	0	0	0	0	0	0	0	0	0	0
	Rate	0.6	0.8	0.5	0.2	1.9	0.0	0.0	0.0	0.0	0.0	0.0	0.0	0.0	0.0	0.0	0.0	0.0	0.0	0.0	0.0	0.0
Rubella	Cases	0	0	0	0	0	0	0	0	0	0	0	0	0	0	0	0	0	0	0	0	0
	Rate	0.0	0.2	0.0	0.0	0.0	0.0	0.0	0.0	0.0	0.0	0.0	0.0	0.0	0.0	0.0	0.0	0.0	0.0	0.0	0.0	0.0
Salmonellosis	Cases	4	15	15	6	7	3	1	0	3	2	0	2	0	1	0	0	0	9	1	7	1
	Rate	23.8	17.4	21.4	14.7	24.7	16.7	20.7	36.8	20.3	23.4	12.7	21.7	20.3	18.0	27.5	31.4	30.7	30.7	61.2	53.1	35.8
Shigellosis	Cases	4	3	2	2	3	0	1	0	0	2	0	0	0	0	0	0	0	0	1	0	0
	Rate	4.5	4.2	3.4	4.4	3.3	0.0	2.4	0.0	0.0	3.2	0.0	0.6	2.1	1.4	0.0	2.2	3.1	2.6	3.6	3.2	0.9
Tuberculosis disease	Cases	0	3	6	9	3	0	0	0	0	1	1	0	2	1	0	2	0	3	0	1	1
	Rate	3.9	9.1	13.5	14.3	5.0	3.9	5.3	19.5	0.9	7.1	3.2	4.2	7.7	6.9	2.5	5.1	9.2	4.8	3.6	2.7	2.7
Typhoid fever	Cases	0	0	1	1	0	0	0	0	0	0	0	0	0	1	0	0	0	0	0	0	0
	Rate	0.0	0.8	2.0	1.5	0.6	0.0	1.4	0.0	0.0	0.0	0.0	0.0	0.0	0.7	0.0	0.0	0.0	0.4	0.0	0.0	0.0
VTEC/STEC infection	Cases	0	1	1	0	0	1	2	0	0	2	1	0	0	1	1	0	1	3	0	1	0
	Rate	1.9	1.9	1.6	1.7	6.4	4.9	6.7	6.5	10.2	4.5	3.2	0.6	0.0	1.4	5.0	2.2	3.1	6.2	1.8	2.7	2.7
Yersiniosis	Cases	0	2	2	2	0	0	1	0	2	1	0	2	1	6	0	0	0	4	1	2	2
	Rate	5.1	9.7	11.5	6.6	5.8	7.9	3.4	8.7	8.3	11.7	7.9	5.4	16.1	17.7	2.5	2.9	30.7	10.4	16.2	8.5	3.6

<sup>1</sup> These data are provisional

<sup>2</sup> Current rate is based on the cumulative total for the 12 months up to and including July 2010 expressed as cases per 100 000

<sup>3</sup> Further data are available from the local Medical Officer of Health

<sup>4</sup> Invasive pneumococcal disease became a notifiable disease on the 17th October 2008

<sup>5</sup> These totals and rates are derived from the EpiSurv report date as opposed to the earliest available date used in the meningococcal disease section of this report

<sup>6</sup> Non–seasonal influenza (capable of transmission between human beings) became an infectious notifiable disease on 29 April 2009.

Notifiable Disease Surveillance Data by District Health Board July 2010

		Cases <sup>1</sup> and current rate <sup>2</sup> for July 2010 by District Health Board <sup>3</sup>																				
Disease		Northland	Waitemata	Auckland	Counties Manukau	Waikato	Lakes	Bay of Plenty	Tairāwhiti	Taranaki	Hawke's Bay	Whanganui	MidCentral	Hutt Valley	Capital and Coast	Wairarapa	Nelson Marlborough	West Coast	Canterbury	South Canterbury	Otago	Southland
Campylobacteriosis	Cases	13	58	49	35	34	6	16	5	8	28	10	13	20	48	8	14	2	40	8	19	8
	Rate	125.8	176.2	170.5	135.1	190.0	198.4	164.6	114.7	258.7	222.9	209.0	160.9	278.9	247.5	225.2	138.9	171.8	144.4	201.6	154.4	162.8
Cryptosporidiosis	Cases	2	2	5	2	4	0	2	0	0	2	0	0	0	0	1	0	0	8	0	0	0
	Rate	27.0	15.0	14.9	9.5	33.6	10.8	7.7	13.0	21.2	24.0	14.3	14.5	9.1	24.3	25.0	28.5	67.5	44.0	52.2	21.8	24.1
Dengue fever	Cases	0	0	1	1	0	0	1	0	0	0	0	0	0	0	0	0	0	0	0	0	0
	Rate	0.6	1.3	2.5	1.0	1.7	1.0	1.0	0.0	0.0	0.6	0.0	0.6	0.7	2.4	0.0	0.0	0.0	0.6	0.0	0.0	0.0
Gastroenteritis	Cases	0	2	3	5	0	1	0	0	0	0	5	5	7	8	0	0	0	4	0	0	1
	Rate	3.2	13.1	19.8	7.5	6.7	7.9	2.9	0.0	5.5	7.8	22.2	38.6	32.9	26.0	7.5	5.8	273.1	10.4	1.8	9.6	2.7
Giardiasis	Cases	2	15	21	15	13	2	4	6	2	15	1	8	1	8	1	4	1	33	2	2	5
	Rate	34.7	42.4	60.1	40.5	47.8	50.1	31.8	32.5	35.1	61.1	53.8	17.5	31.5	56.2	50.0	38.0	33.8	50.2	32.4	30.8	28.6
Haemophilus influenzae type b	Cases	0	0	0	0	0	0	0	0	0	0	0	0	0	0	0	0	0	0	0	0	0
	Rate	0.0	0.4	0.0	0.6	1.1	0.0	0.0	0.0	0.0	0.0	1.6	0.6	0.0	0.0	0.0	0.0	0.0	0.2	0.0	0.0	0.0
Hazardous substances injury	Cases	0	0	0	0	0	0	0	0	0	0	0	0	0	2	0	0	0	0	0	0	0
	Rate	0.6	0.9	0.7	0.0	0.0	0.0	0.0	0.0	0.0	3.2	0.0	0.6	0.0	1.0	0.0	0.0	0.0	0.0	0.0	0.0	0.0
Hepatitis A	Cases	0	1	1	1	0	0	0	0	0	0	0	0	0	0	0	0	0	1	0	0	0
	Rate	0.6	0.9	2.5	2.3	1.4	1.0	1.0	0.0	0.0	1.3	0.0	2.4	1.4	0.7	0.0	0.0	0.0	1.6	0.0	1.6	0.9
Hepatitis B	Cases	1	0	0	2	0	0	0	0	0	0	0	0	1	0	0	0	0	1	0	0	0
	Rate	2.6	0.4	1.8	1.9	0.6	2.0	1.0	4.3	0.0	1.3	1.6	0.6	0.7	1.0	5.0	1.5	0.0	1.0	0.0	1.6	0.0
Hepatitis C	Cases	0	0	1	0	0	0	0	0	0	0	0	0	0	1	0	0	0	0	0	0	0
	Rate	0.0	0.0	0.5	0.4	0.0	0.0	0.0	0.0	3.7	0.0	0.0	0.0	1.4	0.3	5.0	0.0	0.0	0.0	1.8	0.5	0.0
Invasive pneumococcal disease <sup>4</sup>	Cases	4	9	6	22	7	3	3	0	2	4	0	1	3	3	0	0	0	10	0	4	2
	Rate	16.7	12.1	10.1	22.4	14.7	25.5	20.7	10.8	16.6	13.6	19.0	10.2	14.7	9.7	17.5	6.6	0.0	10.0	1.8	15.9	18.8
Lead absorption	Cases	0	0	1	1	3	0	1	0	0	1	0	0	1	2	0	0	0	2	0	1	0
	Rate	3.2	2.5	3.2	2.7	5.0	5.9	3.4	10.8	2.8	3.9	7.9	6.6	11.2	4.5	2.5	7.3	0.0	6.2	16.2	8.0	1.8
Legionellosis	Cases	0	5	5	6	0	0	0	0	0	0	0	0	2	1	0	0	0	2	0	0	1
	Rate	7.1	4.2	3.6	3.1	0.6	0.0	3.9	2.2	1.8	2.6	0.0	1.2	2.8	0.7	0.0	0.0	12.3	4.6	3.6	1.1	3.6
Leptospirosis	Cases	0	0	0	0	2	0	0	0	0	3	1	0	0	0	0	0	1	0	0	1	0
	Rate	1.3	0.2	0.2	0.2	6.7	2.0	1.9	0.0	3.7	4.5	9.5	7.8	0.0	0.3	0.0	2.2	21.5	2.0	1.8	0.5	4.5
Listeriosis	Cases	1	0	0	0	0	0	0	0	0	0	0	0	0	1	0	0	1	0	0	0	0
	Rate	0.6	0.4	0.9	0.8	1.4	0.0	1.4	4.3	0.9	0.0	0.0	2.4	0.7	0.3	0.0	0.0	3.1	0.0	0.0	1.6	0.0
Malaria	Cases	0	0	2	2	0	0	0	0	0	0	0	0	0	0	0	0	0	0	0	1	0
	Rate	0.0	0.9	2.3	2.9	0.6	0.0	1.4	0.0	0.9	0.6	0.0	0.0	0.0	1.0	2.5	1.5	0.0	1.2	0.0	0.5	0.9
Measles	Cases	0	0	0	0	0	0	0	0	0	0	0	0	0	0	0	0	0	0	0	0	0
	Rate	23.1	1.7	1.4	0.4	0.0	1.0	1.0	0.0	0.0	0.6	0.0	1.2	0.0	0.7	0.0	1.5	24.5	17.3	0.0	0.5	1.8
Meningococcal disease <sup>5</sup>	Cases	1	1	1	3	1	1	1	0	0	0	0	0	2	1	0	0	0	0	0	0	0
	Rate	5.1	1.1	2.5	4.2	2.2	2.0	4.3	6.5	2.8	4.5	1.6	7.2	4.2	2.4	2.5	0.0	3.1	2.6	0.0	2.1	3.6
Mumps	Cases	1	4	0	1	0	0	0	0	0	0	0	0	1	0	1	0	0	0	0	2	0
	Rate	1.9	1.5	0.7	1.2	0.6	1.0	1.0	0.0	4.6	0.0	0.0	0.0	2.8	2.8	7.5	1.5	3.1	2.8	1.8	2.1	0.0
Non seasonal influenza A (H1N1) <sup>6</sup>	Cases	7	49	44	58	62	29	34	1	12	5	1	4	1	13	0	8	0	32	22	3	0
	Rate	13.5	15.9	17.3	19.1	25.6	34.4	26.5	64.9	16.6	7.1	9.5	5.4	2.8	18.7	12.5	8.8	15.3	17.3	93.6	17.5	9.8
Paratyphoid fever	Cases	0	0	2	0	0	0	0	0	0	0	0	0	0	0	0	0	0	0	0	0	0
	Rate	0.0	0.6	1.1	0.4	0.6	2.0	0.0	0.0	0.0	0.0	0.0	0.0	0.7	2.1	0.0	0.0	0.0	0.2	0.0	0.0	0.0
Pertussis	Cases	0	4	6	17	6	0	4	1	1	1	0	0	0	2	3	6	3	14	3	1	1
	Rate	6.4	18.5	12.6	17.0	56.7	11.8	25.0	26.0	44.3	12.3	11.1	20.5	31.5	44.8	35.0	24.9	52.2	51.4	37.8	8.5	17.0
Rheumatic fever	Cases	1	1	1	3	1	0	2	3	0	1	0	1	1	1	0	0	0	0	0	0	0
	Rate	9.6	1.3	2.5	9.8	6.9	2.0	3.9	30.3	0.9	4.5	1.6	1.2	1.4	2.4	2.5	0.0	0.0	0.2	0.0	0.0	0.0
Rickettsial disease	Cases	0	2	1	0	4	0	0	0	0	0	0	0	0	0	0	0	0	0	0	0	0
	Rate	0.6	0.8	0.5	0.2	1.9	0.0	0.0	0.0	0.0	0.0	0.0	0.0	0.0	0.0	0.0	0.0	0.0	0.0	0.0	0.0	0.0
Rubella	Cases	0	0	0	0	0	0	0	0	0	0	0	0	0	0	0	0	0	0	0	0	0
	Rate	0.0	0.2	0.0	0.0	0.0	0.0	0.0	0.0	0.0	0.0	0.0	0.0	0.0	0.0	0.0	0.0	0.0	0.0	0.0	0.0	0.0
Salmonellosis	Cases	4	15	15	6	7	3	1	0	3	2	0	2	0	1	0	0	0	9	1	7	1
	Rate	23.8	17.4	21.4	14.7	24.7	16.7	20.7	36.8	20.3	23.4	12.7	21.7	20.3	18.0	27.5	31.4	30.7	30.7	61.2	53.1	35.8
Shigellosis	Cases	4	3	2	2	3	0	1	0	0	2	0	0	0	0	0	0	0	0	1	0	0
	Rate	4.5	4.2	3.4	4.4	3.3	0.0	2.4	0.0	0.0	3.2	0.0	0.6	2.1	1.4	0.0	2.2	3.1	2.6	3.6	3.2	0.9
Tuberculosis disease	Cases	0	3	6	9	3	0	0	0	0	1	1	0	2	1	0	2	0	3	0	1	1
	Rate	3.9	9.1	13.5	14.3	5.0	3.9	5.3	19.5	0.9	7.1	3.2	4.2	7.7	6.9	2.5	5.1	9.2	4.8	3.6	2.7	2.7
Typhoid fever	Cases	0	0	1	1	0	0	0	0	0	0	0	0	0	1	0	0	0	0	0	0	0
	Rate	0.0	0.8	2.0	1.5	0.6	0.0	1.4	0.0	0.0	0.0	0.0	0.0	0.0	0.7	0.0	0.0	0.0	0.4	0.0	0.0	0.0
VTEC/STEC infection	Cases	0	1	1	0	0	1	2	0	0	2	1	0	0	1	1	0	1	3	0	1	0
	Rate	1.9	1.9	1.6	1.7	6.4	4.9	6.7	6.5	10.2	4.5	3.2	0.6	0.0	1.4	5.0	2.2	3.1	6.2	1.8	2.7	2.7
Yersiniosis	Cases	0	2	2	2	0	0	1	0	2	1	0	2	1	6	0	0	0	4	1	2	2
	Rate	5.1	9.7	11.5	6.6	5.8	7.9	3.4	8.7	8.3	11.7	7.9	5.4	16.1	17.7	2.5	2.9	30.7	10.4	16.2	8.5	3.6

<sup>1</sup> These data are provisional

<sup>2</sup> Current rate is based on the cumulative total for the 12 months up to and including July 2010 expressed as cases per 100 000

<sup>3</sup> Further data are available from the local Medical Officer of Health

<sup>4</sup> Invasive pneumococcal disease became a notifiable disease on the 17th October 2008

<sup>5</sup> These totals and rates are derived from the EpiSurv report date as opposed to the earliest available date used in the meningococcal disease section of this report

<sup>6</sup> Non–seasonal influenza (capable of transmission between human beings) became an infectious notifiable disease on 29 April 2009.

Notifiable Disease Surveillance Data for the 12 months ending July-2010 by District Health Board

Disease	Cases for the 12 months ending July 2010 <sup>1 2</sup> by District Health Board <sup>3</sup>																					
	Total	Northland	Waitemata	Auckland	Counties Manukau	Waikato	Lakes	Bay of Plenty	Tairāwhiti	Taranaki	Hawke's Bay	Whanganui	MidCentral	Hutt Valley	Capital and Coast	Wairarapa	Nelson Marlborough	West Coast	Canterbury	South Canterbury	Otago	Southland
Campylobacteriosis	7595	196	931	757	651	684	202	342	53	280	343	132	267	398	713	90	190	56	725	112	291	182
Cryptosporidiosis	952	42	79	66	46	121	11	16	6	23	37	9	24	13	70	10	39	22	221	29	41	27
Dengue fever	46	1	7	11	5	6	1	2	0	0	1	0	1	1	7	0	0	0	3	0	0	0
Gastroenteritis	628	5	69	88	36	24	8	6	0	6	12	14	64	47	75	3	8	89	52	1	18	3
Giardiasis	1889	54	224	267	195	172	51	66	15	38	94	34	29	45	162	20	52	11	252	18	58	32
Haemophilus influenzae type b	12	0	2	0	3	4	0	0	0	0	0	1	1	0	0	0	0	0	1	0	0	0
Hazardous substances injury	18	1	5	3	0	0	0	0	0	0	5	0	1	0	3	0	0	0	0	0	0	0
Hepatitis A	58	1	5	11	11	5	1	2	0	0	2	0	4	2	2	0	0	0	8	0	3	1
Hepatitis B	51	4	2	8	9	2	2	2	2	0	2	1	1	1	3	2	2	0	5	0	3	0
Hepatitis C	15	0	0	2	2	0	0	0	0	4	0	0	0	2	1	2	0	0	0	1	1	0
Invasive pneumococcal disease <sup>4</sup>	605	26	64	45	108	53	26	43	5	18	21	12	17	21	28	7	9	0	50	1	30	21
Lead absorption	203	5	13	14	13	18	6	7	5	3	6	5	11	16	13	1	10	0	31	9	15	2
Legionellosis	124	11	22	16	15	2	0	8	1	2	4	0	2	4	2	0	0	4	23	2	2	4
Leptospirosis	93	2	1	1	1	24	2	4	0	4	7	6	13	0	1	0	3	7	10	1	1	5
Listeriosis	32	1	2	4	4	5	0	3	2	1	0	0	4	1	1	0	0	1	0	0	3	0
Malaria	50	0	5	10	14	2	0	3	0	1	1	0	0	0	3	1	2	0	6	0	1	1
Measles	161	36	9	6	2	0	1	2	0	0	1	0	2	0	2	0	2	8	87	0	1	2
Meningococcal disease <sup>5</sup>	126	8	6	11	20	8	2	9	3	3	7	1	12	6	7	1	0	1	13	0	4	4
Mumps	67	3	8	3	6	2	1	2	0	5	0	0	0	4	8	3	2	1	14	1	4	0
Non seasonal influenza A (H1N1) <sup>6</sup>	793	21	84	77	92	92	35	55	30	18	11	6	9	4	54	5	12	5	87	52	33	11
Paratyphoid fever	22	0	3	5	2	2	2	0	0	0	0	0	0	1	6	0	0	0	1	0	0	0
Pertussis	1187	10	98	56	82	204	12	52	12	48	19	7	34	45	129	14	34	17	258	21	16	19
Rheumatic fever	151	15	7	11	47	25	2	8	14	1	7	1	2	2	7	1	0	0	1	0	0	0
Rickettsial disease	15	1	4	2	1	7	0	0	0	0	0	0	0	0	0	0	0	0	0	0	0	0
Rubella	1	0	1	0	0	0	0	0	0	0	0	0	0	0	0	0	0	0	0	0	0	0
Salmonellosis	1036	37	92	95	71	89	17	43	17	22	36	8	36	29	52	11	43	10	154	34	100	40
Shigellosis	121	7	22	15	21	12	0	5	0	0	5	0	1	3	4	0	3	1	13	2	6	1
Tuberculosis disease	322	6	48	60	69	18	4	11	9	1	11	2	7	11	20	1	7	3	24	2	5	3
Typhoid fever	29	0	4	9	7	2	0	3	0	0	0	0	0	0	2	0	0	0	2	0	0	0
VTEC/STEC infection	144	3	10	7	8	23	5	14	3	11	7	2	1	0	4	2	3	1	31	1	5	3
Yersiniosis	393	8	51	51	32	21	8	7	4	9	18	5	9	23	51	1	4	10	52	9	16	4
Total	16939	504	1878	1711	1573	1627	399	715	181	498	657	246	552	679	1430	175	425	247	2124	296	657	365

<sup>1</sup> These data are provisional

<sup>2</sup> Further data are available from the local Medical Officer of Health

<sup>3</sup> These totals are derived from the EpiSurv report date as opposed to the earliest available date used in the meningococcal disease section

<sup>4</sup> Invasive pneumococcal disease became a notifiable disease on the 17th October 2008

<sup>5</sup> These totals and rates are derived from the EpiSurv report date as opposed to the earliest available date used in the meningococcal disease section of this report

<sup>6</sup> Non-seasonal influenza (capable of transmission between human beings) became an infectious notifiable disease on 29 April 2009.



National Notifiable Disease Surveillance Data July 2010

Disease	Current Year - 2010 <sup>1</sup>			Previous Year - 2009		
	July 2010 Cases	Cumulative total since 1 January	Current 12 Month Rate <sup>2</sup>	July 2009 Cases	Cumulative total since 1 January	Current 12 Month Rate <sup>2</sup>
Campylobacteriosis	442	3973	176.0	416	3553	163.3
Cryptosporidiosis	28	450	22.1	55	352	21.4
Dengue fever	3	25	1.1	5	118	3.9
Gastroenteritis <sup>3</sup>	41	266	14.6	56	350	15.8
Giardiasis	161	1251	43.8	119	1001	38.9
Haemophilus influenzae type b	0	7	0.3	0	5	0.2
Hazardous substances injury	2	8	0.4	0	1	0.2
Hepatitis A	4	37	1.3	4	23	1.3
Hepatitis B <sup>4</sup>	5	30	1.2	11	34	1.0
Hepatitis C <sup>4</sup>	2	7	0.3	5	24	0.8
Invasive pneumococcal disease <sup>5</sup>	83	303	14.0	113	395	12.1
Lead absorption	13	113	4.7	31	182	6.7
Legionellosis	22	94	2.9	1	44	1.9
Leptospirosis	8	56	2.2	3	32	2.0
Listeriosis	3	19	0.7	3	15	0.6
Malaria	5	30	1.2	5	30	1.2
Measles	0	40	3.7	87	127	3.0
Meningococcal disease <sup>6</sup>	12	60	2.9	22	67	2.9
Mumps	10	35	1.6	5	31	1.2
Non seasonal influenza A (H1N1) <sup>7</sup>	385	428	18.4	2100	3304	76.6
Paratyphoid fever	2	12	0.5	2	15	0.6
Pertussis	73	546	27.5	104	757	23.5
Rheumatic fever	16	103	3.5	10	92	3.5
Rickettsial disease	7	11	0.3	0	1	0.2
Rubella	0	1	0.0	0	4	0.2
Salmonellosis	77	639	24.0	62	731	28.7
Shigellosis	18	81	2.8	5	79	2.9
Tuberculosis disease	33	194	7.5	27	172	6.7
Typhoid fever	3	23	0.7	1	28	0.9
VTEC/STEC infection	15	93	3.3	3	92	3.1
Yersiniosis	28	220	9.1	21	257	10.2

<sup>1</sup> These data are provisional

<sup>2</sup> Rate is based on the cumulative total for the current year (12 months up to and including July 2010) or the previous year (12 months up to and including July 2009), expressed as cases per 100 000

<sup>3</sup> Cases of gastroenteritis from a common source or foodborne intoxication

<sup>4</sup> Only acute cases of this disease are currently notifiable

<sup>5</sup> Invasive pneumococcal disease became a notifiable disease on the 17th October 2008

<sup>6</sup> These totals and rates are derived from the EpiSurv report date as opposed to the earliest available date used in the meningococcal disease section of this report

<sup>7</sup> Non-seasonal influenza (capable of transmission between human beings) became an infectious notifiable disease on 29 April 2009.

Other notifiable infectious disease reported in July: Cholera (1) , Hydatid disease (2)