
MONTHLY SURVEILLANCE REPORT

Data contained within this monthly report is based on information recorded on EpiSurv by public health service staff up until 2 July 2008. As this information may be updated over time, the results should be regarded as provisional only.

Table of contents

1. Key notifiable disease trends	1
2. Outbreaks	3
3. Deaths from notifiable diseases	3
4. Trends in selected diseases to June 2008	4
5. Data Tables	5

1. Key notifiable disease trends

- *Brucellosis*: Three cases of brucellosis, two confirmed and one under investigation, were notified in June 2008 from Waitemata (2) and Otago (1) DHBs. The Otago case worked as a shearer in the United States during the incubation period. No risk factor information is currently recorded for the remaining two cases.
- *Campylobacteriosis*: The number of campylobacter notifications has continued to drop from 380 in May 2008 to 275 in June 2008 (Figure 1). For the 12 month period ending 30 June 2008 the national rate was 201.7 per 100 000 population compared to 358.0 for the same 12 month period last year.
- *Cryptosporidiosis*: 24 cryptosporidiosis cases were notified in June 2008 compared to 47 cases notified in the same month of the previous year. For the 12 month period ending 30 June 2008 the national rate was 15.9 per 100 000 population compared to 23.5 for the same 12 month period last year.
- *Leprosy*: One case of leprosy, still under investigation, was notified in June 2008. The case was from Counties Manukau DHB. No risk factor information is currently recorded.
- *Meningococcal disease*: Based on the earliest date available¹, 12 cases of meningococcal disease were notified during June 2008, eight (66.7%) of which were laboratory-confirmed. In comparison, seven cases were notified the previous month, May 2008, and eight cases were notified during the same month

¹ The 'earliest' date refers to the earliest recorded date for the case (onset or hospitalisation date rather than report date, if available). 'Earliest' date, as opposed to 'report date' alone, is used throughout the analysis of meningococcal disease notification data.

last year, June 2007. For the 12 month period ending 30 June 2008, Hawke's Bay DHB recorded the highest incidence rate of 8.5 per 100 000 population (13 cases), followed by Tairāwhiti (6.5 per 100 000, 3 cases), Capital and Coast (3.9 per 100 000, 11 cases), and Northland (3.9 per 100 000, 6 cases). The highest age-specific incidence rate was in infants aged less than one year (27.5 per 100 000 population, 17 cases), followed by those in the 1-4 years age group (14.7 per 100 000 population, 34 cases), and those in the 5-9 years age group (5.9 per 100 000 population, 17 cases).

- *Pertussis*: 25 cases of pertussis were notified in June 2008 bringing the year to date total to 138. Only 2 (8.0%) were laboratory-confirmed. The highest number of cases were reported from Waikato (6) and Canterbury (4) DHBs. For the previous 12 months, Waikato DHB had the highest incidence rate of 21.0 per 100 000 population (6 cases) compared to a national rate of 6.9 per 100 000 population. The current rate by age group was highest amongst infants aged less than one year (50.2 per 100 000 population, 31 cases), followed by children in the 1-4 years age group (14.3 per 100 000 population, 33 cases), and children in the 10-14 years age group (8.5 per 100 000 population, 26 cases).
- *Rickettsial disease*: Two cases of rickettsial disease, both under investigation were notified in June 2008. The cases were from Counties Manukau and Waitemata DHBs. The Counties Manukau case was originally from Fiji and the disease was detected as part of a pre-employment health check. The Waitemata case's probable source of exposure was close contact with a cat that catches rats and mice.
- *Taeniasis*: One case was notified with taeniasis in June 2008. The case was from Capital and Coast DHB and had been in Ethiopia during the incubation period.
- *VTEC/STEC*: 10 cases of VTEC/STEC were notified in June 2008 compared to four notified cases in the same month of the previous year (Figure 2). The cases were reported from Waikato (3), Counties Manukau (2), Taranaki (1), MidCentral (1), Nelson Marlborough (1), Canterbury (1), and Southland (1) DHBs. Two cases were hospitalised. The cases were in the following age groups: 1-4 years (4), 5-9 years (2), 60-69 years (2), 20-29 years (1), and 30-39 years (1). VTEC O157 was isolated for nine of the cases.

2. Outbreaks

Completed outbreak reports

Ten outbreak reports were entered into EpiSurv and completed during June 2008 (Table 1).

Table 1: Summary of completed outbreaks reported to ESR during June 2008

Organism/Toxin/Illness	Reporting Public Health District	Number of outbreaks	Total number of cases
<i>Campylobacter</i>	Canterbury	1	2
Gastroenteritis	Manawatu	1	18
<i>Giardia</i>	Auckland, Otago	3	9
Norovirus	Auckland, South Canterbury	4	46
<i>Salmonella</i>	Auckland	1	2
Total		10	77

Interim outbreak reports

Twenty-one interim outbreaks have been reported in June 2008 (Table 2). The status of the outbreak and cases involved are subject to change, as more data becomes available.

Table 2: Summary of interim outbreaks reported to ESR during June 2008

Organism/Toxin/Illness	Reporting Public Health District	Number of outbreaks	Total number of cases
Gastroenteritis	Auckland, Waikato, Tauranga, Taranaki, Wellington, Otago	17	118
<i>Giardia</i>	Auckland, Rotorua	2	3
Measles	Canterbury	1	2
Norovirus	Manawatu	1	11
Total		21	134

3. Deaths from notifiable diseases

Two deaths were reported for the month of June from Legionellosis and Meningococcal disease (Table 3).

Table 3: Summary of deaths from notifiable diseases reported to ESR during June 2008

Disease	District Health Board	Age group	Sex
Legionellosis	Waikato	70+ years	F
Meningococcal disease	Nelson Marlborough	1-4 years	F

4. Trends in selected diseases to June 2008

Figure 1: Campylobacteriosis notifications by month by year, January 2003 – June 2008

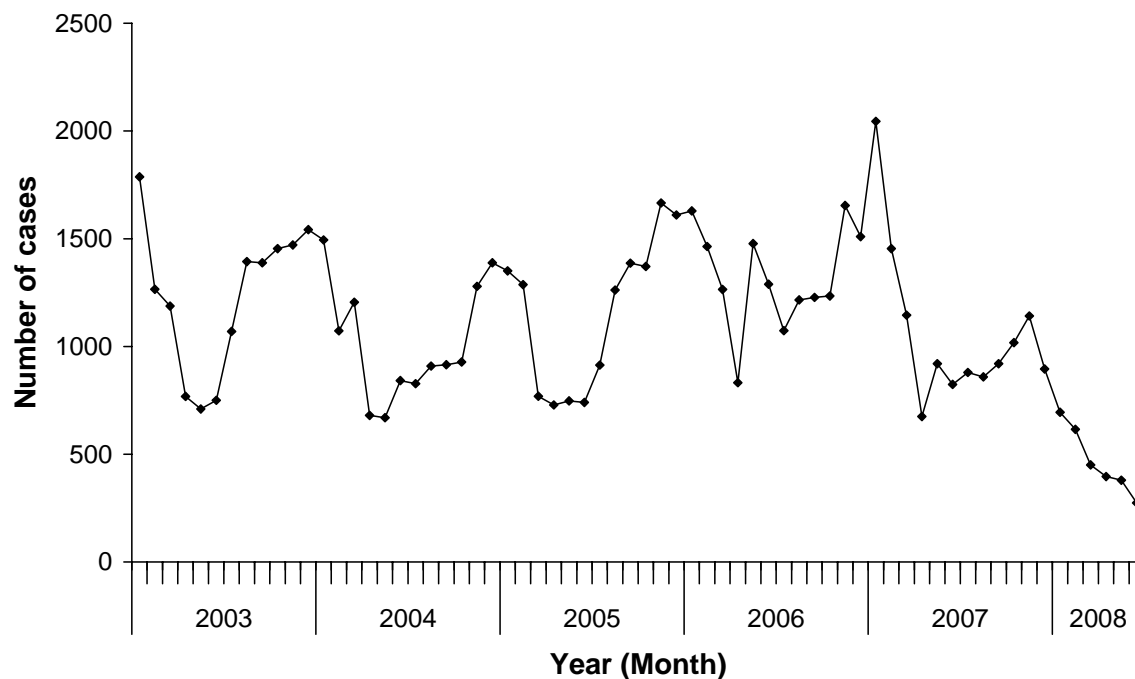
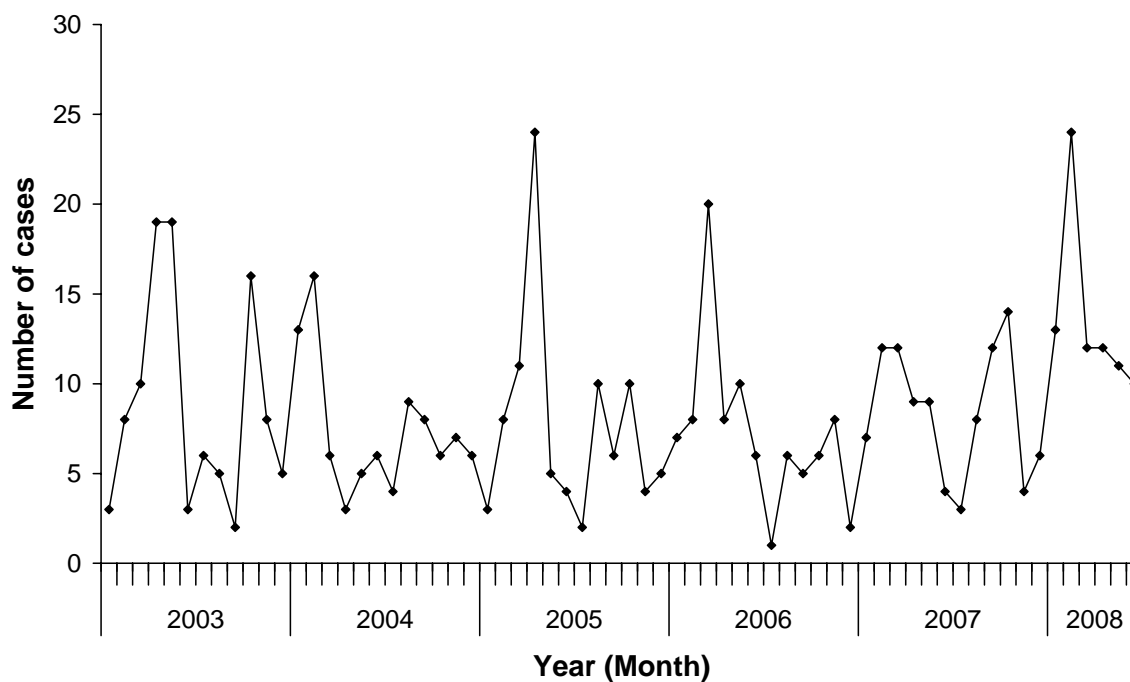


Figure 2: VTEC/STEC notifications by month by year, January 2003 – June 2008



5. Data Tables

National Surveillance Data June 2008

Disease	Current Year - 2008 ¹			Previous Year - 2007		
	June 2008 Cases	Cumulative total since 1 January	Current 12 Month Rate ²	June 2007 Cases	Cumulative total since 1 January	Current 12 Month Rate ²
Campylobacteriosis	275	2814	201.7	824	7063	358.0
Cryptosporidiosis	24	178	15.9	47	428	23.5
Dengue fever	7	52	1.7	5	94	2.5
Gastroenteritis	37	294	14.5	37	304	16.1
Giardiasis	111	854	35.2	93	767	32.2
Haemophilus influenzae type b	0	7	0.3	3	11	0.3
Hazardous substances injury	1	1	0.1	0	0	0.0
Hepatitis A	5	33	1.2	2	25	1.4
Hepatitis B ⁴	3	26	1.4	6	41	1.6
Hepatitis C ⁴	0	11	0.5	3	20	0.9
Lead absorption	25	115	3.7	4	36	1.6
Legionellosis	9	37	1.5	3	37	1.4
Leptospirosis	9	48	1.6	5	46	2.2
Listeriosis	0	11	0.6	2	12	0.5
Malaria	4	19	0.8	3	9	0.6
Measles	6	9	0.5	1	11	0.5
Meningococcal disease ⁵	12	48	2.7	8	37	3.3
Mumps	12	57	2.4	4	28	1.3
Paratyphoid fever	0	13	0.6	2	12	0.6
Pertussis	25	138	6.9	30	177	15.8
Rheumatic fever	13	159	6.3	8	31	1.9
Rickettsial disease	2	2	0.1	0	1	0.3
Rubella	1	6	0.3	2	3	0.2
Salmonellosis	53	778	32.2	79	691	30.0
Shigellosis	7	61	2.8	11	67	2.7
Tuberculosis disease	25	158	7.2	20	140	8.4
Typhoid fever	2	15	0.7	1	33	1.5
VTEC/STEC infection	10	82	3.1	4	53	1.9
Yersiniosis	32	308	13.7	45	257	12.5

¹ These data are provisional

² Rate is based on the cumulative total for the current year (12 months up to and including June 2008) or the previous year (12 months up to and including June 2007), expressed as cases per 100 000

³ Cases of gastroenteritis from a common source or foodborne intoxication

⁴ Only acute cases of this disease are currently notifiable

⁵ These totals and rates are derived from the EpiSurv report date as opposed to the earliest available date used in the meningococcal disease section of this report

⁶ Other notifiable infectious disease reported in June: Brucellosis (3) , Leprosy (1) , Taeniasis (1)

Surveillance Data by District Health Board June 2008

		Cases ¹ and current rate ² for June 2008 by District Health Board ³																				
Disease		Northland	Waitemata	Auckland	Counties Manukau	Waikato	Lakes	Bay of Plenty	Tairāwhiti	Taranaki	Hawke's Bay	Whanganui	MidCentral	Hutt Valley	Capital and Coast	Wairarapa	Nelson Marlborough	West Coast	Canterbury	South Canterbury	Otago	Southland
Campylobacteriosis	Cases	12	38	37	24	12	5	13	4	10	13	4	6	10	20	1	4	0	27	9	25	1
	Rate	207.9	236.9	229.9	164.2	212.7	201.0	159.4	85.0	240.5	228.8	187.1	140.7	229.7	233.9	116.3	167.3	192.2	187.5	278.8	184.0	205.7
Cryptosporidiosis	Cases	5	1	1	2	4	0	2	0	1	0	0	1	0	0	0	1	0	4	0	2	0
	Rate	18.8	5.1	4.4	5.4	36.0	9.9	12.8	13.1	17.7	11.8	4.7	21.3	12.7	13.5	15.2	29.7	37.2	16.3	79.7	19.4	51.6
Dengue fever	Cases	0	1	2	2	0	0	0	0	1	0	0	0	0	1	0	0	0	0	0	0	0
	Rate	0.0	2.7	6.5	3.4	0.3	3.0	0.0	0.0	0.9	0.7	0.0	0.6	0.0	0.4	0.0	0.0	0.0	1.2	0.0	0.0	0.0
Gastroenteritis	Cases	0	10	3	4	2	1	0	0	1	0	1	0	1	4	1	3	1	4	0	1	0
	Rate	3.2	18.9	21.5	9.9	7.6	14.8	9.3	0.0	4.7	9.2	26.7	8.5	18.4	21.0	10.1	5.2	27.9	29.6	3.6	3.2	1.8
Giardiasis	Cases	2	23	12	8	16	5	1	4	1	3	0	2	0	10	0	7	2	11	0	3	1
	Rate	38.3	32.1	49.9	31.8	31.7	37.4	37.4	21.8	15.8	29.4	17.3	25.6	19.8	71.1	35.4	34.9	40.3	31.0	16.3	34.4	20.8
Haemophilus influenzae type b	Cases	0	0	0	0	0	0	0	0	0	0	0	0	0	0	0	0	0	0	0	0	0
	Rate	0.6	0.2	0.0	0.4	0.0	0.0	1.0	4.4	0.0	0.0	0.0	0.0	0.0	0.7	0.0	0.0	0.0	0.2	0.0	0.0	0.0
Hazardous substances injury	Cases	0	0	0	0	1	0	0	0	0	0	0	0	0	0	0	0	0	0	0	0	0
	Rate	0.0	0.0	0.2	0.4	0.3	0.0	0.0	0.0	0.0	0.0	0.0	0.0	0.0	0.0	0.0	0.0	0.0	0.0	0.0	0.0	0.0
Hepatitis A	Cases	0	0	1	2	1	0	0	0	0	0	0	1	0	0	0	0	0	0	0	0	0
	Rate	0.6	0.8	2.1	2.8	1.1	0.0	0.5	0.0	0.9	0.7	1.6	0.6	1.4	0.4	5.1	1.5	0.0	0.6	0.0	1.1	1.8
Hepatitis B	Cases	1	1	0	0	0	1	0	0	0	0	0	0	0	0	0	0	0	0	0	0	0
	Rate	1.3	1.6	2.8	1.3	0.8	2.0	0.5	2.2	1.9	1.3	1.6	0.6	2.1	2.1	2.5	1.5	0.0	1.0	0.0	0.0	0.0
Hepatitis C	Cases	0	0	0	0	0	0	0	0	0	0	0	0	0	0	0	0	0	0	0	0	0
	Rate	0.0	0.6	0.7	0.4	0.0	1.0	0.0	0.0	2.8	0.0	0.0	0.0	0.7	0.7	2.5	0.0	9.3	0.6	0.0	0.0	0.9
Invasive pneumococcal disease	Cases	0	2	2	14	0	0	0	0	0	0	0	0	0	0	0	1	0	0	0	0	0
	Rate	0.0	0.4	0.5	3.0	0.0	0.0	0.0	0.0	0.0	0.0	0.0	0.0	0.0	0.0	0.0	0.7	0.0	0.0	0.0	0.0	0.0
Lead absorption	Cases	0	1	12	4	2	3	0	0	0	0	1	1	0	0	0	0	0	1	0	0	0
	Rate	1.9	3.3	6.2	3.9	3.4	4.9	1.5	0.0	1.9	2.0	11.0	1.8	2.8	2.1	2.5	3.0	0.0	5.3	3.6	5.4	3.6
Legionellosis	Cases	0	1	1	1	1	0	1	0	0	1	0	0	0	1	0	1	0	1	0	0	0
	Rate	1.3	1.2	2.5	1.3	0.6	2.0	2.0	0.0	1.9	2.6	0.0	0.6	1.4	1.4	0.0	2.2	0.0	2.4	0.0	0.5	1.8
Leptospirosis	Cases	0	0	0	1	1	0	1	4	0	1	1	0	0	0	0	0	0	0	0	0	0
	Rate	1.3	0.2	0.0	0.2	2.3	1.0	1.0	15.3	2.8	6.5	4.7	3.0	0.0	0.4	2.5	2.2	9.3	2.4	1.8	0.5	2.7
Listeriosis	Cases	0	0	0	0	0	0	0	0	0	0	0	0	0	0	0	0	0	0	0	0	0
	Rate	0.6	0.2	0.2	0.6	1.1	0.0	0.5	0.0	0.9	0.0	1.6	1.2	1.4	0.7	2.5	0.0	0.0	0.8	1.8	0.0	0.0
Malaria	Cases	0	0	3	1	0	0	0	0	0	0	0	0	0	0	0	0	0	0	0	0	0
	Rate	1.3	0.8	3.0	0.4	0.6	0.0	0.0	2.2	0.0	0.0	0.0	0.0	0.7	0.4	0.0	0.7	0.0	1.2	0.0	0.5	0.9
Measles	Cases	0	0	1	1	0	0	0	0	0	0	0	0	0	0	0	0	0	4	0	0	0
	Rate	0.0	1.0	0.2	0.2	0.0	0.0	0.0	0.0	1.9	1.3	0.0	0.0	0.7	0.4	0.0	0.7	6.2	1.2	0.0	0.0	0.0
A Yb]b[cV&WU' X]gYUgY	Cases	0	2	3	1	2	0	0	1	0	1	0	0	0	1	0	1	0	0	0	0	0
	Rate	3.9	1.4	2.1	2.6	3.7	1.0	1.5	6.5	3.7	8.5	1.6	1.2	3.5	3.9	2.5	2.2	3.1	2.2	1.8	2.7	2.7
Mumps	Cases	0	1	4	3	1	0	1	0	0	2	0	0	0	0	0	0	0	0	0	0	0
	Rate	2.6	2.3	3.0	4.5	3.4	2.0	3.0	0.0	0.0	2.6	1.6	1.2	0.7	2.5	2.5	0.0	0.0	2.4	1.8	0.5	1.8
Other	Cases	0	0	0	1	0	0	0	0	0	0	0	0	0	0	0	0	0	0	0	0	0
	Rate	0.0	0.2	0.2	1.9	0.0	0.0	0.0	0.0	0.0	0.7	0.0	0.0	0.0	0.0	0.0	0.0	0.0	0.4	0.0	0.5	0.0
Paratyphoid fever	Cases	0	0	0	0	0	0	0	0	0	0	0	0	0	0	0	0	0	0	0	0	0
	Rate	0.6	0.6	0.2	1.5	0.6	1.0	0.5	0.0	0.0	0.0	0.0	0.0	0.7	0.7	0.0	0.0	0.0	0.6	0.0	0.0	1.8
Pertussis	Cases	0	2	2	2	6	0	0	0	0	1	0	0	0	2	0	1	0	4	1	2	2
	Rate	5.2	3.9	3.0	4.3	21.0	3.9	6.9	4.4	1.9	7.2	1.6	3.7	2.8	4.3	2.5	14.9	6.2	9.2	14.5	5.4	14.5
Rheumatic fever	Cases	0	0	0	9	2	0	0	0	0	2	0	0	0	0	0	0	0	0	0	0	0
	Rate	5.8	1.8	3.5	13.8	6.5	44.3	33.4	6.5	0.9	7.2	1.6	1.8	2.1	3.9	2.5	0.0	0.0	0.2	0.0	0.0	0.0
Rickettsial disease	Cases	0	1	0	1	0	0	0	0	0	0	0	0	0	0	0	0	0	0	0	0	0
	Rate	0.0	0.4	0.0	0.2	0.0	0.0	0.0	0.0	0.0	0.0	0.0	0.0	0.0	0.0	0.0	0.0	0.0	0.0	0.0	0.0	0.0
Rubella	Cases	0	0	1	0	0	0	0	0	0	0	0	0	0	0	0	0	0	0	0	0	0
	Rate	0.6	0.2	0.2	0.2	0.0	0.0	1.0	0.0	0.0	0.0	0.0	1.2	0.0	1.1	0.0	0.7	0.0	0.0	0.0	1.1	0.0
Salmonellosis	Cases	1	4	4	5	8	1	2	1	1	0	0	2	1	3	3	2	0	9	0	6	0
	Rate	22.7	23.4	23.8	20.2	35.7	29.6	49.2	21.8	39.1	31.4	18.9	26.2	33.2	36.3	45.5	46.8	24.8	34.3	47.1	59.2	50.7
Shigellosis	Cases	0	1	1	2	1	0	1	0	1	0	0	0	0	0	0	0	0	0	0	0	0
	Rate	0.0	2.5	6.5	4.5	1.7	3.9	2.5	0.0	2.8	1.3	0.0	1.2	4.9	3.6	0.0	3.0	0.0	2.4	0.0	1.1	0.9
Tuberculosis disease	Cases	2	8	2	2	1	0	1	0	0	0	1	0	0	3	0	0	0	5	0	0	0
	Rate	4.5	10.7	13.9	9.0	4.5	3.9	4.9	0.0	1.9	8.5	7.9	6.1	12.7	6.8	0.0	3.7	0.0	6.5	10.9	0.5	0.0
Typhoid fever	Cases	0	0	0	1	0	0	0	0	0	0	0	0	1	0	0	0	0	0	0	0	0
	Rate	0.0	0.2	2.1	1.9	0.6	0.0	0.0	0.0	0.9	0.7	1.6	0.6	1.4	0.4	0.0	0.0	0.0	0.4	0.0	0.0	0.0
VTEC/STEC infection	Cases	0	0	0	2	3	0	0	0	1	0	0	1	0	0	0	1	0	1	0	0	1
	Rate	5.8	2.9	0.7	2.2	5.7	5.9	3.4	0.0	4.7	2.0	1.6	1.2	0.7	2.5	0.0	4.5	9.3	4.5	5.4	1.6	2.7
Yersiniosis	Cases	1	2	1	6	4	2	0	0	0	0	1	0	0	6	0	1	0	8	0	0	0
	Rate	6.5	8.2	9.2	6.0	12.2	23.6	8.4	15.3	12.1	20.9	14.2	6.1	14.8	19.9	5.1	11.9	62.0	31.8	19.9	5.9	9.1

¹ These data are provisional

² Current rate is based on the cumulative total for the 12 months up to and including June 2008 expressed as cases per 100 000

³ Further data are available from the local Medical Officer of Health

‘H\YgY’hcHJ’g’UbX’fUhYg’UfY’XYfJj’YX’Zfca’‘h\Y’9d]G’fj’fYdcfhXUhY’Ug’cddcgYX’hc’h\Y’YUf’]YghUj’Uj’UV’Y’XUhY’i’gYX’]b’h\Y’a’Yb]b[‘cV&WU’‘X]gYUgY’gYW]cb’cZ’h\Jg’fYdcfh

Surveillance Data by District Health Board June 2008

		Cases ¹ and current rate ² for June 2008 by District Health Board ³																				
Disease		Northland	Waitemata	Auckland	Counties Manukau	Waikato	Lakes	Bay of Plenty	Tairāwhiti	Taranaki	Hawke's Bay	Whanganui	MidCentral	Hutt Valley	Capital and Coast	Wairarapa	Nelson Marlborough	West Coast	Canterbury	South Canterbury	Otago	Southland
Campylobacteriosis	Cases	12	38	37	24	12	5	13	4	10	13	4	6	10	20	1	4	0	27	9	25	1
	Rate	207.9	236.9	229.9	164.2	212.7	201.0	159.4	85.0	240.5	228.8	187.1	140.7	229.7	233.9	116.3	167.3	192.2	187.5	278.8	184.0	205.7
Cryptosporidiosis	Cases	5	1	1	2	4	0	2	0	1	0	0	1	0	0	0	1	0	4	0	2	0
	Rate	18.8	5.1	4.4	5.4	36.0	9.9	12.8	13.1	17.7	11.8	4.7	21.3	12.7	13.5	15.2	29.7	37.2	16.3	79.7	19.4	51.6
Dengue fever	Cases	0	1	2	2	0	0	0	0	1	0	0	0	0	1	0	0	0	0	0	0	0
	Rate	0.0	2.7	6.5	3.4	0.3	3.0	0.0	0.0	0.9	0.7	0.0	0.6	0.0	0.4	0.0	0.0	0.0	1.2	0.0	0.0	0.0
Gastroenteritis	Cases	0	10	3	4	2	1	0	0	1	0	1	0	1	4	1	3	1	4	0	1	0
	Rate	3.2	18.9	21.5	9.9	7.6	14.8	9.3	0.0	4.7	9.2	26.7	8.5	18.4	21.0	10.1	5.2	27.9	29.6	3.6	3.2	1.8
Giardiasis	Cases	2	23	12	8	16	5	1	4	1	3	0	2	0	10	0	7	2	11	0	3	1
	Rate	38.3	32.1	49.9	31.8	31.7	37.4	37.4	21.8	15.8	29.4	17.3	25.6	19.8	71.1	35.4	34.9	40.3	31.0	16.3	34.4	20.8
Haemophilus influenzae type b	Cases	0	0	0	0	0	0	0	0	0	0	0	0	0	0	0	0	0	0	0	0	0
	Rate	0.6	0.2	0.0	0.4	0.0	0.0	1.0	4.4	0.0	0.0	0.0	0.0	0.0	0.7	0.0	0.0	0.0	0.2	0.0	0.0	0.0
Hazardous substances injury	Cases	0	0	0	0	1	0	0	0	0	0	0	0	0	0	0	0	0	0	0	0	0
	Rate	0.0	0.0	0.2	0.4	0.3	0.0	0.0	0.0	0.0	0.0	0.0	0.0	0.0	0.0	0.0	0.0	0.0	0.0	0.0	0.0	0.0
Hepatitis A	Cases	0	0	1	2	1	0	0	0	0	0	0	1	0	0	0	0	0	0	0	0	0
	Rate	0.6	0.8	2.1	2.8	1.1	0.0	0.5	0.0	0.9	0.7	1.6	0.6	1.4	0.4	5.1	1.5	0.0	0.6	0.0	1.1	1.8
Hepatitis B	Cases	1	1	0	0	0	1	0	0	0	0	0	0	0	0	0	0	0	0	0	0	0
	Rate	1.3	1.6	2.8	1.3	0.8	2.0	0.5	2.2	1.9	1.3	1.6	0.6	2.1	2.1	2.5	1.5	0.0	1.0	0.0	0.0	0.0
Hepatitis C	Cases	0	0	0	0	0	0	0	0	0	0	0	0	0	0	0	0	0	0	0	0	0
	Rate	0.0	0.6	0.7	0.4	0.0	1.0	0.0	0.0	2.8	0.0	0.0	0.0	0.7	0.7	2.5	0.0	9.3	0.6	0.0	0.0	0.9
Invasive pneumococcal disease	Cases	0	2	2	14	0	0	0	0	0	0	0	0	0	0	0	1	0	0	0	0	0
	Rate	0.0	0.4	0.5	3.0	0.0	0.0	0.0	0.0	0.0	0.0	0.0	0.0	0.0	0.0	0.0	0.7	0.0	0.0	0.0	0.0	0.0
Lead absorption	Cases	0	1	12	4	2	3	0	0	0	0	1	1	0	0	0	0	0	1	0	0	0
	Rate	1.9	3.3	6.2	3.9	3.4	4.9	1.5	0.0	1.9	2.0	11.0	1.8	2.8	2.1	2.5	3.0	0.0	5.3	3.6	5.4	3.6
Legionellosis	Cases	0	1	1	1	1	0	1	0	0	1	0	0	0	1	0	1	0	1	0	0	0
	Rate	1.3	1.2	2.5	1.3	0.6	2.0	2.0	0.0	1.9	2.6	0.0	0.6	1.4	1.4	0.0	2.2	0.0	2.4	0.0	0.5	1.8
Leptospirosis	Cases	0	0	0	1	1	0	1	4	0	1	1	0	0	0	0	0	0	0	0	0	0
	Rate	1.3	0.2	0.0	0.2	2.3	1.0	1.0	15.3	2.8	6.5	4.7	3.0	0.0	0.4	2.5	2.2	9.3	2.4	1.8	0.5	2.7
Listeriosis	Cases	0	0	0	0	0	0	0	0	0	0	0	0	0	0	0	0	0	0	0	0	0
	Rate	0.6	0.2	0.2	0.6	1.1	0.0	0.5	0.0	0.9	0.0	1.6	1.2	1.4	0.7	2.5	0.0	0.0	0.8	1.8	0.0	0.0
Malaria	Cases	0	0	3	1	0	0	0	0	0	0	0	0	0	0	0	0	0	0	0	0	0
	Rate	1.3	0.8	3.0	0.4	0.6	0.0	0.0	2.2	0.0	0.0	0.0	0.0	0.7	0.4	0.0	0.7	0.0	1.2	0.0	0.5	0.9
Measles	Cases	0	0	1	1	0	0	0	0	0	0	0	0	0	0	0	0	0	4	0	0	0
	Rate	0.0	1.0	0.2	0.2	0.0	0.0	0.0	0.0	1.9	1.3	0.0	0.0	0.7	0.4	0.0	0.7	6.2	1.2	0.0	0.0	0.0
A Yb]b[cV&VWU' X]gYUgY	Cases	0	2	3	1	2	0	0	1	0	1	0	0	0	1	0	1	0	0	0	0	0
	Rate	3.9	1.4	2.1	2.6	3.7	1.0	1.5	6.5	3.7	8.5	1.6	1.2	3.5	3.9	2.5	2.2	3.1	2.2	1.8	2.7	2.7
Mumps	Cases	0	1	4	3	1	0	1	0	0	2	0	0	0	0	0	0	0	0	0	0	0
	Rate	2.6	2.3	3.0	4.5	3.4	2.0	3.0	0.0	0.0	2.6	1.6	1.2	0.7	2.5	2.5	0.0	0.0	2.4	1.8	0.5	1.8
Other	Cases	0	0	0	1	0	0	0	0	0	0	0	0	0	0	0	0	0	0	0	0	0
	Rate	0.0	0.2	0.2	1.9	0.0	0.0	0.0	0.0	0.0	0.7	0.0	0.0	0.0	0.0	0.0	0.0	0.0	0.4	0.0	0.5	0.0
Paratyphoid fever	Cases	0	0	0	0	0	0	0	0	0	0	0	0	0	0	0	0	0	0	0	0	0
	Rate	0.6	0.6	0.2	1.5	0.6	1.0	0.5	0.0	0.0	0.0	0.0	0.0	0.7	0.7	0.0	0.0	0.0	0.6	0.0	0.0	1.8
Pertussis	Cases	0	2	2	2	6	0	0	0	0	1	0	0	0	2	0	1	0	4	1	2	2
	Rate	5.2	3.9	3.0	4.3	21.0	3.9	6.9	4.4	1.9	7.2	1.6	3.7	2.8	4.3	2.5	14.9	6.2	9.2	14.5	5.4	14.5
Rheumatic fever	Cases	0	0	0	9	2	0	0	0	0	2	0	0	0	0	0	0	0	0	0	0	0
	Rate	5.8	1.8	3.5	13.8	6.5	44.3	33.4	6.5	0.9	7.2	1.6	1.8	2.1	3.9	2.5	0.0	0.0	0.2	0.0	0.0	0.0
Rickettsial disease	Cases	0	1	0	1	0	0	0	0	0	0	0	0	0	0	0	0	0	0	0	0	0
	Rate	0.0	0.4	0.0	0.2	0.0	0.0	0.0	0.0	0.0	0.0	0.0	0.0	0.0	0.0	0.0	0.0	0.0	0.0	0.0	0.0	0.0
Rubella	Cases	0	0	1	0	0	0	0	0	0	0	0	0	0	0	0	0	0	0	0	0	0
	Rate	0.6	0.2	0.2	0.2	0.0	0.0	1.0	0.0	0.0	0.0	0.0	1.2	0.0	1.1	0.0	0.7	0.0	0.0	0.0	1.1	0.0
Salmonellosis	Cases	1	4	4	5	8	1	2	1	1	0	0	2	1	3	3	2	0	9	0	6	0
	Rate	22.7	23.4	23.8	20.2	35.7	29.6	49.2	21.8	39.1	31.4	18.9	26.2	33.2	36.3	45.5	46.8	24.8	34.3	47.1	59.2	50.7
Shigellosis	Cases	0	1	1	2	1	0	1	0	1	0	0	0	0	0	0	0	0	0	0	0	0
	Rate	0.0	2.5	6.5	4.5	1.7	3.9	2.5	0.0	2.8	1.3	0.0	1.2	4.9	3.6	0.0	3.0	0.0	2.4	0.0	1.1	0.9
Tuberculosis disease	Cases	2	8	2	2	1	0	1	0	0	0	1	0	0	3	0	0	0	5	0	0	0
	Rate	4.5	10.7	13.9	9.0	4.5	3.9	4.9	0.0	1.9	8.5	7.9	6.1	12.7	6.8	0.0	3.7	0.0	6.5	10.9	0.5	0.0
Typhoid fever	Cases	0	0	0	1	0	0	0	0	0	0	0	0	1	0	0	0	0	0	0	0	0
	Rate	0.0	0.2	2.1	1.9	0.6	0.0	0.0	0.0	0.9	0.7	1.6	0.6	1.4	0.4	0.0	0.0	0.0	0.4	0.0	0.0	0.0
VTEC/STEC infection	Cases	0	0	0	2	3	0	0	0	1	0	0	1	0	0	0	1	0	1	0	0	1
	Rate	5.8	2.9	0.7	2.2	5.7	5.9	3.4	0.0	4.7	2.0	1.6	1.2	0.7	2.5	0.0	4.5	9.3	4.5	5.4	1.6	2.7
Yersiniosis	Cases	1	2	1	6	4	2	0	0	0	0	1	0	0	6	0	1	0	8	0	0	0
	Rate	6.5	8.2	9.2	6.0	12.2	23.6	8.4	15.3	12.1	20.9	14.2	6.1	14.8	19.9	5.1	11.9	62.0	31.8	19.9	5.9	9.1

¹ These data are provisional

² Current rate is based on the cumulative total for the 12 months up to and including June 2008 expressed as cases per 100 000

³ Further data are available from the local Medical Officer of Health

‘H\YgY’hcHU’g’UbX’fUH’g’UfY’XYfJj’YX’Zfca’ ‘h\Y’9d]G’ fJ’fYdcfhXUH’Ug’cddcgYX’hc’ h\Y’YUf’]Ygh’Uj’Uj’UV’Y’XUH’i’ gYX’]b’ h\Y’a’ Yb]b[’ cV&VWU’ ‘X]gYUgY’gYVW]cb’cZ’h\Jg’fYdcfh

Surveillance Data for the 12 months ending June-2008 by District Health Board

Disease	Cases for the 12 months ending June 2008 ^{1 2} by District Health Board ³																					
	Total	Northland	Waitemata	Auckland	Counties Manukau	Waikato	Lakes	Bay of Plenty	Tairāwhiti	Taranaki	Hawke's Bay	Whanganui	MidCentral	Hutt Valley	Capital and Coast	Wairarapa	Nelson Marlborough	West Coast	Canterbury	South Canterbury	Otago	Southland
Campylobacteriosis	8529	320	1216	996	763	751	204	324	39	258	350	119	231	325	658	46	225	62	919	154	342	227
Cryptosporidiosis	674	29	26	19	25	127	10	26	6	19	18	3	35	18	38	6	40	12	80	44	36	57
Dengue fever	72	0	14	28	16	1	3	0	0	1	1	0	1	0	1	0	0	0	6	0	0	0
Gastroenteritis	612	5	97	93	46	27	15	19	0	5	14	17	14	26	59	4	7	9	145	2	6	2
Giardiasis	1489	59	165	216	148	112	38	76	10	17	45	11	42	28	200	14	47	13	152	9	64	23
Haemophilus influenzae type b	11	1	1	0	2	0	0	2	2	0	0	0	0	0	2	0	0	0	1	0	0	0
Hazardous substances injury	4	0	0	1	2	1	0	0	0	0	0	0	0	0	0	0	0	0	0	0	0	0
Hepatitis A	50	1	4	9	13	4	0	1	0	1	1	1	1	2	1	2	2	0	3	0	2	2
Hepatitis B	58	2	8	12	6	3	2	1	1	2	2	1	1	3	6	1	2	0	5	0	0	0
Hepatitis C	23	0	3	3	2	0	1	0	0	3	0	0	0	1	2	1	0	3	3	0	0	1
Invasive pneumococcal disease	19	0	2	2	14	0	0	0	0	0	0	0	0	0	0	0	1	0	0	0	0	0
Lead absorption	157	3	17	27	18	12	5	3	0	2	3	7	3	4	6	1	4	0	26	2	10	4
Legionellosis	64	2	6	11	6	2	2	4	0	2	4	0	1	2	4	0	3	0	12	0	1	2
Leptospirosis	68	2	1	0	1	8	1	2	7	3	10	3	5	0	1	1	3	3	12	1	1	3
Listeriosis	25	1	1	1	3	4	0	1	0	1	0	1	2	2	2	1	0	0	4	1	0	0
Malaria	35	2	4	13	2	2	0	0	1	0	0	0	0	1	1	0	1	0	6	0	1	1
Measles	22	0	5	1	1	0	0	0	0	2	2	0	0	1	1	0	1	2	6	0	0	0
Meningococcal disease	115	6	7	9	12	13	1	3	3	4	13	1	2	5	11	1	3	1	11	1	5	3
Mumps	102	4	12	13	21	12	2	6	0	0	4	1	2	1	7	1	0	0	12	1	1	2
Other	15	0	1	1	9	0	0	0	0	0	1	0	0	0	0	0	0	0	2	0	1	0
Paratyphoid fever	24	1	3	1	7	2	1	1	0	0	0	0	0	1	2	0	0	0	3	0	0	2
Pertussis	293	8	20	13	20	74	4	14	2	2	11	1	6	4	12	1	20	2	45	8	10	16
Rheumatic fever	268	9	9	15	64	23	45	68	3	1	11	1	3	3	11	1	0	0	1	0	0	0
Rickettsial disease	3	0	2	0	1	0	0	0	0	0	0	0	0	0	0	0	0	0	0	0	0	0
Rubella	14	1	1	1	1	0	0	2	0	0	0	0	2	0	3	0	1	0	0	0	2	0
Salmonellosis	1361	35	120	103	94	126	30	100	10	42	48	12	43	47	102	18	63	8	168	26	110	56
Shigellosis	120	0	13	28	21	6	4	5	0	3	2	0	2	7	10	0	4	0	12	0	2	1
Tuberculosis disease	305	7	55	60	42	16	4	10	0	2	13	5	10	18	19	0	5	0	32	6	1	0
Typhoid fever	30	0	1	9	9	2	0	0	0	1	1	1	1	2	1	0	0	0	2	0	0	0
VTEC/STEC infection	129	9	15	3	10	20	6	7	0	5	3	1	2	1	7	0	6	3	22	3	3	3
Yersiniosis	578	10	42	40	28	43	24	17	7	13	32	9	10	21	56	2	16	20	156	11	11	10
Total	15269	517	1871	1728	1407	1391	402	692	91	389	589	195	419	523	1223	101	454	138	1846	269	609	415

¹ These data are provisional

² Further data are available from the local Medical Officer of Health

³ These totals are derived from the EpiSurv report date as opposed to the earliest available date used in the meningococcal disease section

National Surveillance Data June 2008

Disease	Current Year - 2008 ¹			Previous Year - 2007		
	June 2008 Cases	Cumulative total since 1 January	Current 12 Month Rate ²	June 2007 Cases	Cumulative total since 1 January	Current 12 Month Rate ²
Campylobacteriosis	275	2814	201.7	824	7063	358.0
Cryptosporidiosis	24	178	15.9	47	428	23.5
Dengue fever	7	52	1.7	5	94	2.5
Gastroenteritis	37	294	14.5	37	304	16.1
Giardiasis	111	854	35.2	93	767	32.2
Haemophilus influenzae type b	0	7	0.3	3	11	0.3
Hazardous substances injury	1	1	0.1	0	0	0.0
Hepatitis A	5	33	1.2	2	25	1.4
<YdUhhjg'6	3	26	1.4	6	41	1.6
<YdUhhjg'7	0	11	0.5	3	20	0.9
Lead absorption	25	115	3.7	4	36	1.6
Legionellosis	9	37	1.5	3	37	1.4
Leptospirosis	9	48	1.6	5	46	2.2
Listeriosis	0	11	0.6	2	12	0.5
Malaria	4	19	0.8	3	9	0.6
Measles	6	9	0.5	1	11	0.5
A Yb]b[cWc'WWW'X]gYUgY	12	48	2.7	8	37	3.3
Mumps	12	57	2.4	4	28	1.3
Paratyphoid fever	0	13	0.6	2	12	0.6
Pertussis	25	138	6.9	30	177	15.8
Rheumatic fever	13	159	6.3	8	31	1.9
Rickettsial disease	2	2	0.1	0	1	0.3
Rubella	1	6	0.3	2	3	0.2
Salmonellosis	53	778	32.2	79	691	30.0
Shigellosis	7	61	2.8	11	67	2.7
Tuberculosis disease	25	158	7.2	20	140	8.4
Typhoid fever	2	15	0.7	1	33	1.5
VTEC/STEC infection	10	82	3.1	4	53	1.9
Yersiniosis	32	308	13.7	45	257	12.5

¹ These data are provisional

² Rate is based on the cumulative total for the current year (12 months up to and including June 2008) or the previous year (12 months up to and including June 2007), expressed as cases per 100 000

³ Cases of gastroenteritis from a common source or foodborne intoxication

'Cb`mUW`hY`WUgYg`cZ`h`jg`X]gYUgY`UFY`W`ffYbhmbch]Z]UV`Y`
'H\YgY`hcHU`g`UbX`fUH`g`UFY`XYf]j`YX`Zfca`'h`Y`9d]Gi`fj`'fYdcfhXUHY`Ug`cddcgYX`'hc`'h`Y`YUF`]YghUj`Uj`'UV`Y`XUHY`i`gYX`]b`'h`Y`
a`Yb]b[`cWc'WWW`X]gYUgY`gYVH]cb`cZ`h`jg`fYdcfh`
'CH`Yf`bch]Z]UV`Y`]bZYVH]ci`g`X]gYUgY`fYdcfhYX`]b`>`bY.`6fi`W`cg]g`fi`E`Z`@YdfcgmifY`E`Z`HUYb]Ug]g`fYc`