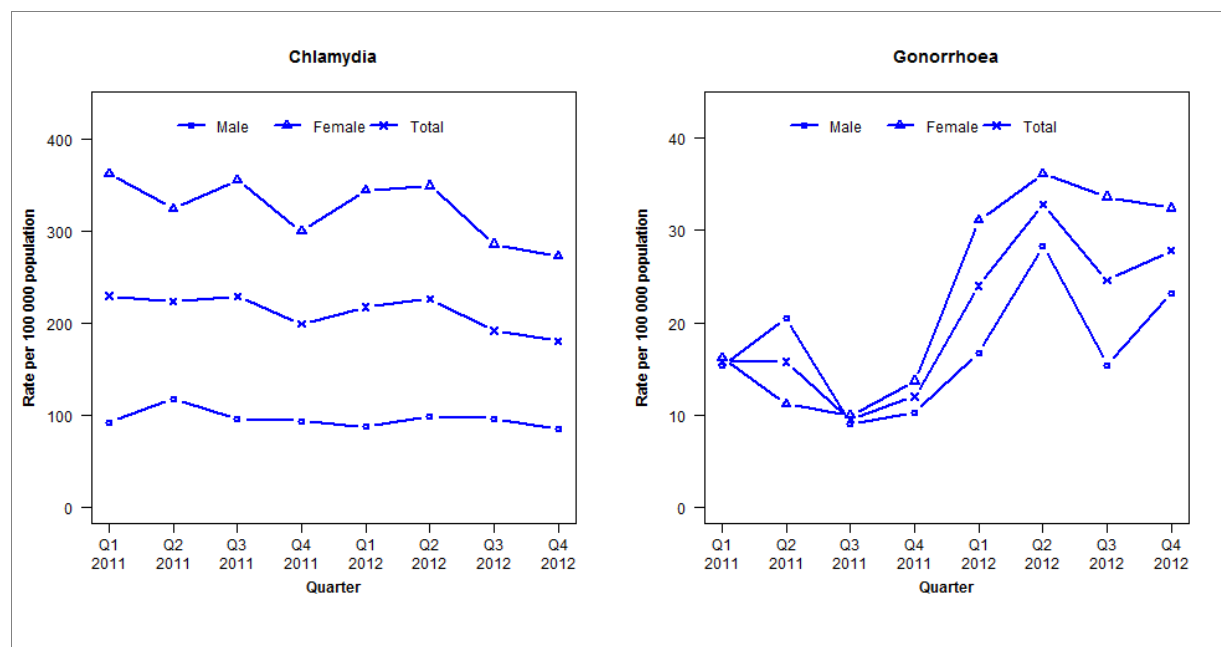


Laboratory surveillance of chlamydia and gonorrhoea: October - December 2012

Quarterly chlamydia and gonorrhoea rates (female, male and total population), Jan 2011 to Dec 2012



Denominator = Statistics New Zealand mid-year population estimates

Note: NAAT for gonorrhoea testing introduced in Q1 2012.

Number of lab confirmed chlamydia cases (female, male and total population) and number of tests per 100 000 population, January 2011 to December 2012

	Q1 2011	Q2 2011	Q3 2011	Q4 2011	Q1 2012	Q2 2012	Q3 2012	Q4 2012
Number of lab-confirmed cases¹	363	353	362	315	344	358	304	285
<i>Female</i>	290	260	285	240	276	280	229	219
<i>Male</i>	72	92	75	73	68	77	75	66
Tests per 100 000 population²	1921	1969	1877	1808	1911	1838	1849	1857

¹Total includes cases where sex is not reported

²Denominator = Statistics New Zealand mid-year population estimates

Number of lab confirmed gonorrhoea cases (female, male and total population) and number of tests per 100 000 population, January 2011 to December 2012

	Q1 2011	Q2 2011	Q3 2011	Q4 2011	Q1 2012	Q2 2012	Q3 2012	Q4 2012
Number of lab-confirmed cases¹	25	25	15	19	38	52	39	44
<i>Female</i>	13	9	8	11	25	29	27	26
<i>Male</i>	12	16	7	8	13	22	12	18
Tests per 100 000 population²	2501	2732	2923	2811	3122	3488	2678	2632

¹Total includes cases where sex is not reported

²Denominator = Statistics New Zealand mid-year population estimates