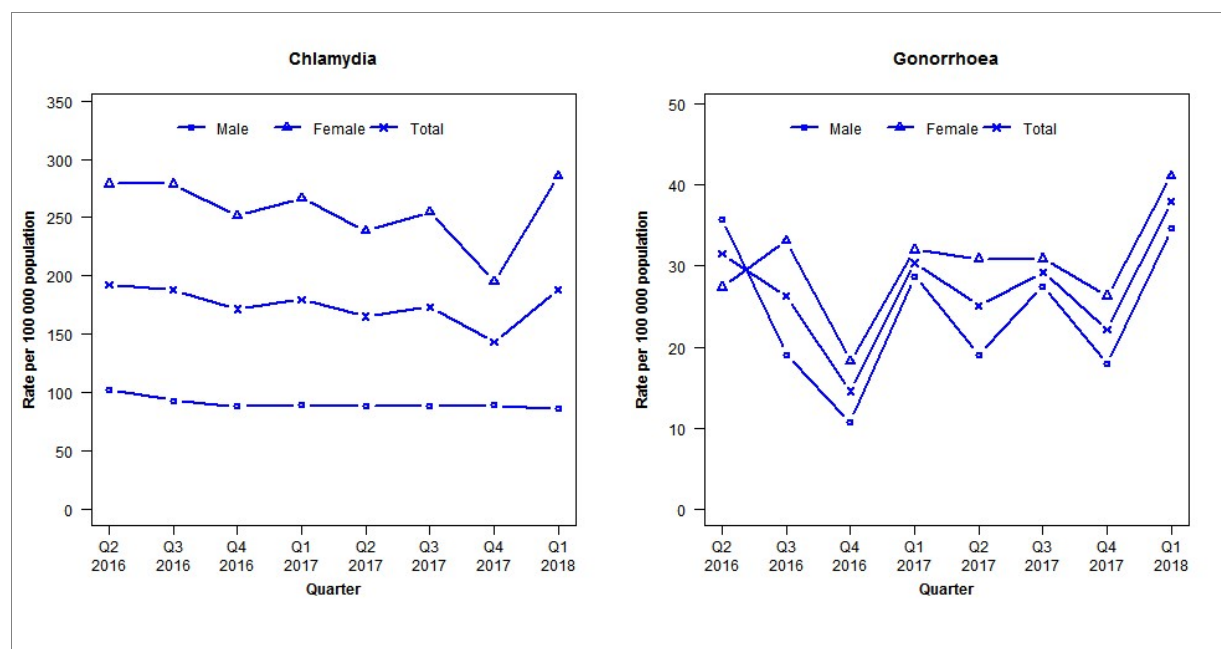


## Laboratory surveillance of chlamydia and gonorrhoea: January - March 2018

Quarterly chlamydia and gonorrhoea rates (male, female and total<sup>1</sup> population), April 2016 to March 2018



<sup>1</sup>Total includes cases where sex is not reported

Denominator = Statistics New Zealand mid-year population estimates

Note: Data processing methods allow for exclusion of repeat tests.

### Number of lab confirmed chlamydia cases (male, female and total population) and number of tests per 100 000 population, April 2016 to March 2018

	Q2 2016	Q3 2016	Q4 2016	Q1 2017	Q2 2017	Q3 2017	Q4 2017	Q1 2018
<b>Number of lab-confirmed cases<sup>1</sup></b>	330	322	294	308	283	297	246	322
<i>Female</i>	244	244	220	233	209	223	171	250
<i>Male</i>	86	78	74	75	74	74	75	72
<b>Tests per 100 000 population<sup>2</sup></b>	1866	1780	1686	1840	1861	1854	1755	1933

<sup>1</sup>Total includes cases where sex is not reported

<sup>2</sup>Denominator = Statistics New Zealand mid-year population estimates

### Number of lab confirmed gonorrhoea cases (female, male and total population) and number of tests per 100 000 population, April 2016 to March 2018

	Q2 2016	Q3 2016	Q4 2016	Q1 2017	Q2 2017	Q3 2017	Q4 2017	Q1 2018
<b>Number of lab-confirmed cases<sup>1</sup></b>	54	45	25	52	43	50	38	65
<i>Female</i>	24	29	16	28	27	27	23	36
<i>Male</i>	30	16	9	24	16	23	15	29
<b>Tests per 100 000 population<sup>2</sup></b>	2551	2313	2176	2322	2306	2277	2173	2400

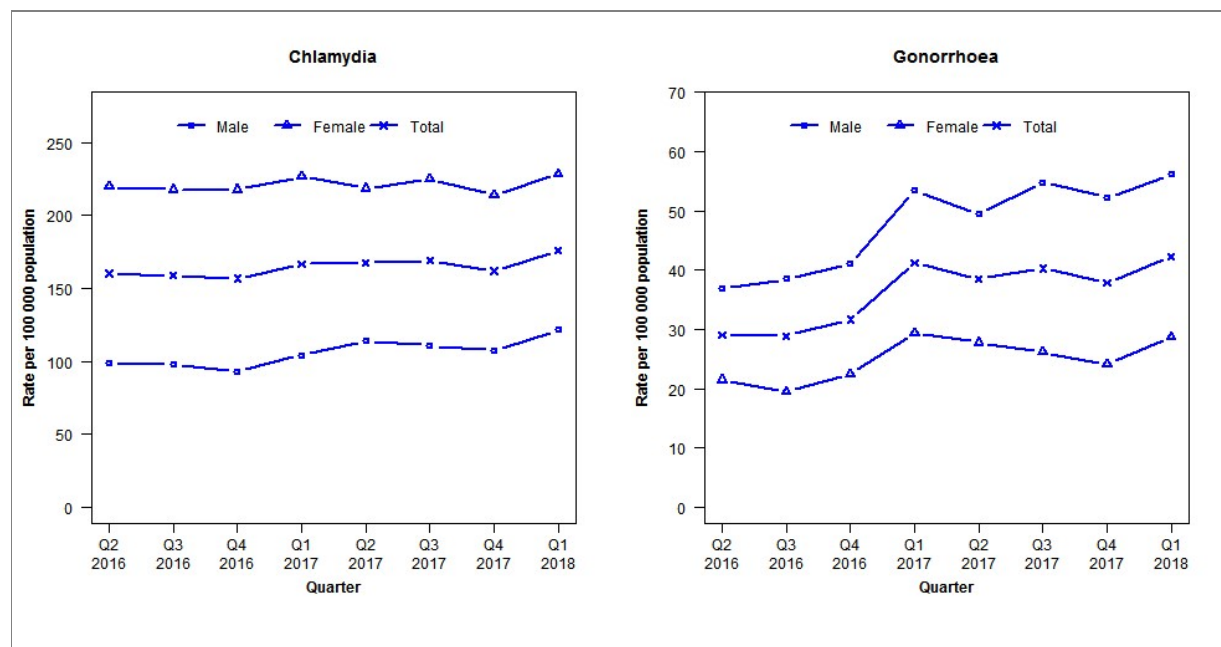
<sup>1</sup>Total includes cases where sex is not reported

<sup>2</sup>Denominator = Statistics New Zealand mid-year population estimates

## AUCKLAND REGION

Auckland, Counties Manukau and Waitemata DHBs

## Laboratory surveillance of chlamydia and gonorrhoea: January - March 2018

Quarterly chlamydia and gonorrhoea rates (male, female and total<sup>1</sup> population), April 2016 to March 2018<sup>1</sup>Total includes cases where sex is not reported

Denominator = Statistics New Zealand mid-year population estimates

Note: Data processing methods allow for exclusion of repeat tests.

## Number of lab confirmed chlamydia cases (male, female and total population) and number of tests per 100 000 population, April 2016 to March 2018

	Q2 2016	Q3 2016	Q4 2016	Q1 2017	Q2 2017	Q3 2017	Q4 2017	Q1 2018
<b>Number of lab-confirmed cases<sup>1</sup></b>	2616	2591	2558	2720	2729	2759	2641	2872
<i>Female</i>	1820	1804	1804	1878	1812	1862	1775	1893
<i>Male</i>	795	784	750	839	917	890	864	976
<b>Tests per 100 000 population<sup>2</sup></b>	2537	2447	2249	2460	2417	2502	2428	2675

<sup>1</sup>Total includes cases where sex is not reported<sup>2</sup>Denominator = Statistics New Zealand mid-year population estimates

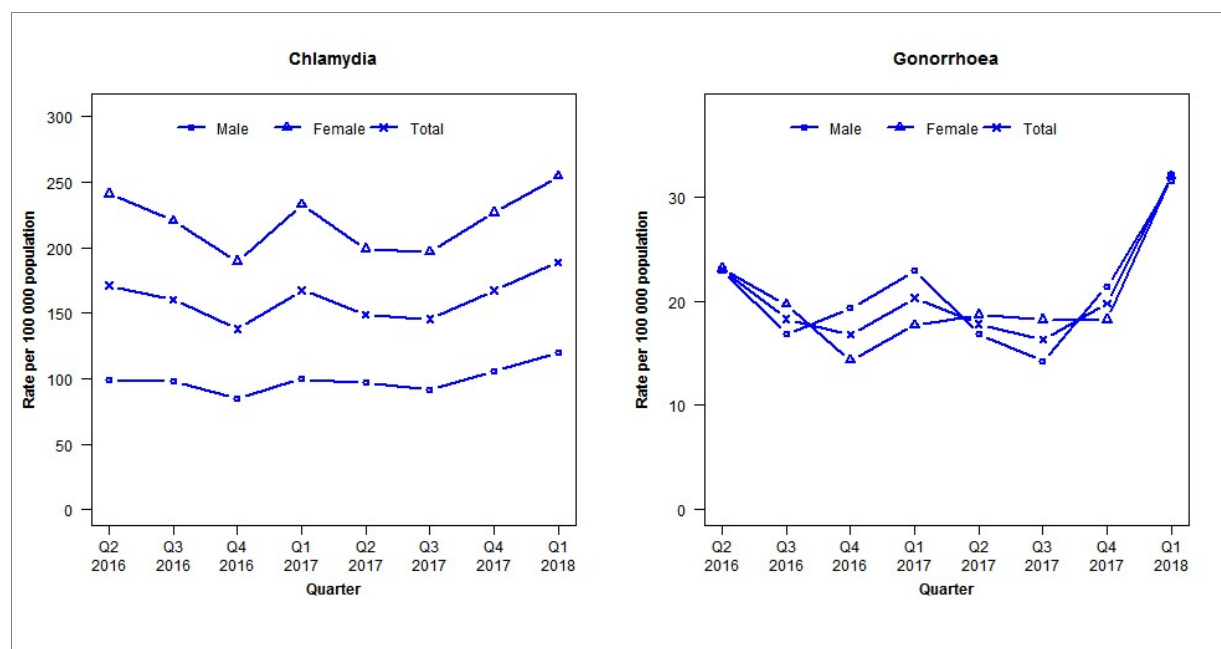
## Number of lab confirmed gonorrhoea cases (female, male and total population) and number of tests per 100 000 population, April 2016 to March 2018

	Q2 2016	Q3 2016	Q4 2016	Q1 2017	Q2 2017	Q3 2017	Q4 2017	Q1 2018
<b>Number of lab-confirmed cases<sup>1</sup></b>	474	471	517	673	628	657	619	690
<i>Female</i>	178	162	186	244	230	217	200	239
<i>Male</i>	296	309	330	429	397	440	419	451
<b>Tests per 100 000 population<sup>2</sup></b>	2712	2605	2369	2627	2586	2695	2626	2798

<sup>1</sup>Total includes cases where sex is not reported<sup>2</sup>Denominator = Statistics New Zealand mid-year population estimates

## Laboratory surveillance of chlamydia and gonorrhoea: January - March 2018

Quarterly chlamydia and gonorrhoea rates (male, female and total<sup>1</sup> population), April 2016 to March 2018



<sup>1</sup>Total includes cases where sex is not reported

Denominator = Statistics New Zealand mid-year population estimates

Note: Data processing methods allow for exclusion of repeat tests. Waikato Hospital data missing in previous 2017 quarterly reports (Q1–Q3) have been included for all quarters in 2017 in this report.

### Number of lab confirmed chlamydia cases (male, female and total population) and number of tests per 100 000 population, April 2016 to March 2018

	Q2 2016	Q3 2016	Q4 2016	Q1 2017	Q2 2017	Q3 2017	Q4 2017	Q1 2018
<b>Number of lab-confirmed cases<sup>1</sup></b>	683	640	551	669	594	581	669	754
<i>Female</i>	489	448	385	473	404	399	460	517
<i>Male</i>	194	192	166	196	190	180	208	236
<b>Tests per 100 000 population<sup>2</sup></b>	2236	2158	1993	2160	2071	2155	2007	2174

<sup>1</sup>Total includes cases where sex is not reported

<sup>2</sup>Denominator = Statistics New Zealand mid-year population estimates

### Number of lab confirmed gonorrhoea cases (female, male and total population) and number of tests per 100 000 population, April 2016 to March 2018

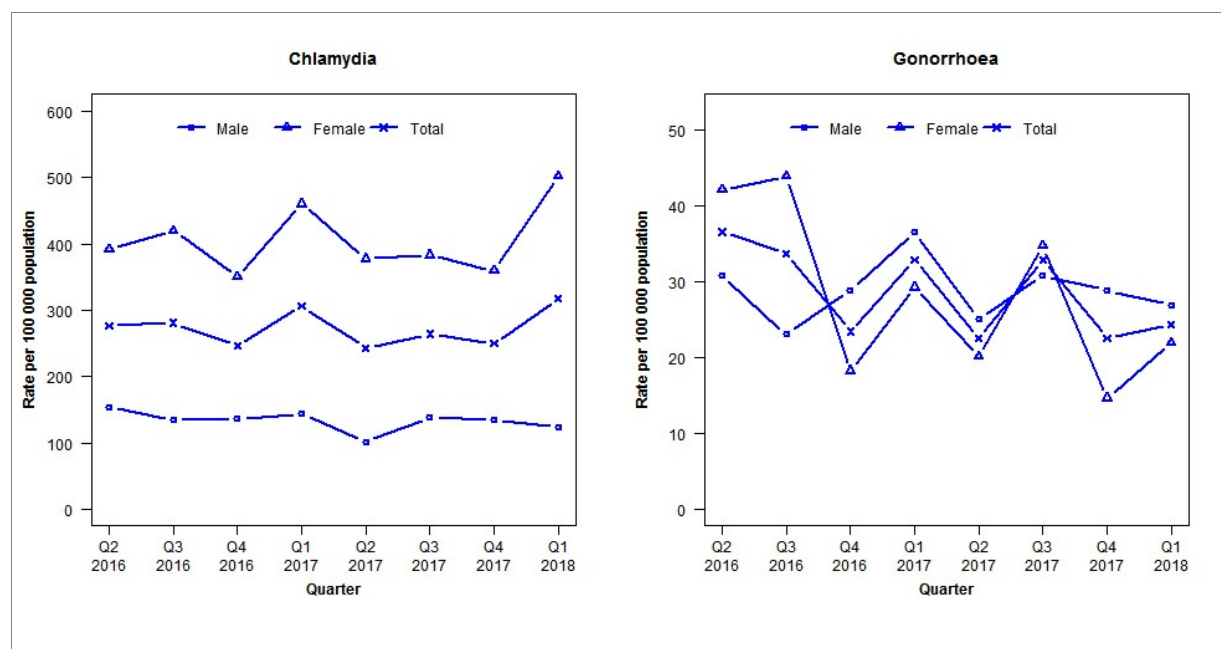
	Q2 2016	Q3 2016	Q4 2016	Q1 2017	Q2 2017	Q3 2017	Q4 2017	Q1 2018
<b>Number of lab-confirmed cases<sup>1</sup></b>	92	73	67	81	71	65	79	128
<i>Female</i>	47	40	29	36	38	37	37	65
<i>Male</i>	45	33	38	45	33	28	42	62
<b>Tests per 100 000 population<sup>2</sup></b>	2367	2184	2024	2186	2095	2177	2029	2192

<sup>1</sup>Total includes cases where sex is not reported

<sup>2</sup>Denominator = Statistics New Zealand mid-year population estimates

## Laboratory surveillance of chlamydia and gonorrhoea: January - March 2018

Quarterly chlamydia and gonorrhoea rates (male, female and total<sup>1</sup> population), April 2016 to March 2018



<sup>1</sup>Total includes cases where sex is not reported

Denominator = Statistics New Zealand mid-year population estimates

Note: Data processing methods allow for exclusion of repeat tests.

### Number of lab confirmed chlamydia cases (male, female and total population) and number of tests per 100 000 population, April 2016 to March 2018

	Q2 2016	Q3 2016	Q4 2016	Q1 2017	Q2 2017	Q3 2017	Q4 2017	Q1 2018
<b>Number of lab-confirmed cases<sup>1</sup></b>	294	299	262	326	259	281	266	338
<i>Female</i>	214	229	191	251	206	209	196	274
<i>Male</i>	80	70	71	75	53	72	70	64
<b>Tests per 100 000 population<sup>2</sup></b>	2937	2834	2490	2830	2634	2646	2634	2876

<sup>1</sup>Total includes cases where sex is not reported

<sup>2</sup>Denominator = Statistics New Zealand mid-year population estimates

### Number of lab confirmed gonorrhoea cases (female, male and total population) and number of tests per 100 000 population, April 2016 to March 2018

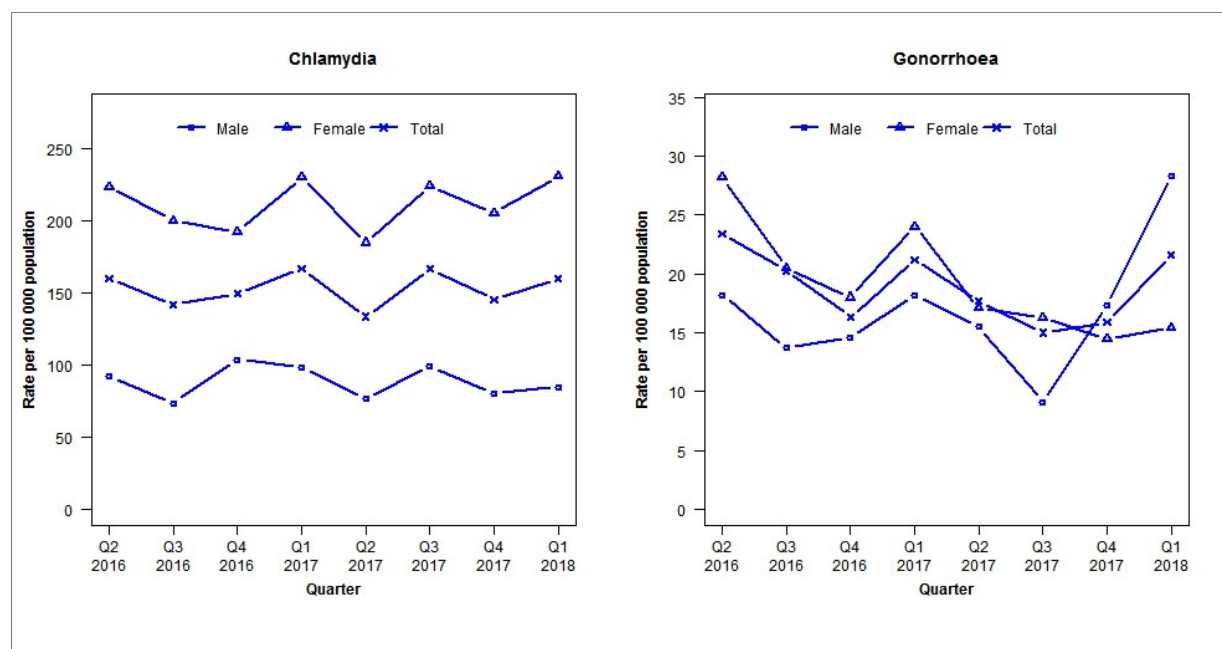
	Q2 2016	Q3 2016	Q4 2016	Q1 2017	Q2 2017	Q3 2017	Q4 2017	Q1 2018
<b>Number of lab-confirmed cases<sup>1</sup></b>	39	36	25	35	24	35	24	26
<i>Female</i>	23	24	10	16	11	19	8	12
<i>Male</i>	16	12	15	19	13	16	15	14
<b>Tests per 100 000 population<sup>2</sup></b>	2947	2841	2494	2836	2642	2648	2634	2876

<sup>1</sup>Total includes cases where sex is not reported

<sup>2</sup>Denominator = Statistics New Zealand mid-year population estimates

## Laboratory surveillance of chlamydia and gonorrhoea: January - March 2018

Quarterly chlamydia and gonorrhoea rates (male, female and total<sup>1</sup> population), April 2016 to March 2018



<sup>1</sup>Total includes cases where sex is not reported

Denominator = Statistics New Zealand mid-year population estimates

Note: Data processing methods allow for exclusion of repeat tests.

### Number of lab confirmed chlamydia cases (male, female and total population) and number of tests per 100 000 population, April 2016 to March 2018

	Q2 2016	Q3 2016	Q4 2016	Q1 2017	Q2 2017	Q3 2017	Q4 2017	Q1 2018
<b>Number of lab-confirmed cases<sup>1</sup></b>	362	322	339	378	303	378	329	363
<i>Female</i>	261	234	225	269	216	262	240	270
<i>Male</i>	101	81	114	108	84	109	88	93
<b>Tests per 100 000 population<sup>2</sup></b>	2078	2101	1966	2191	2033	2132	1927	2200

<sup>1</sup>Total includes cases where sex is not reported

<sup>2</sup>Denominator = Statistics New Zealand mid-year population estimates

### Number of lab confirmed gonorrhoea cases (female, male and total population) and number of tests per 100 000 population, April 2016 to March 2018

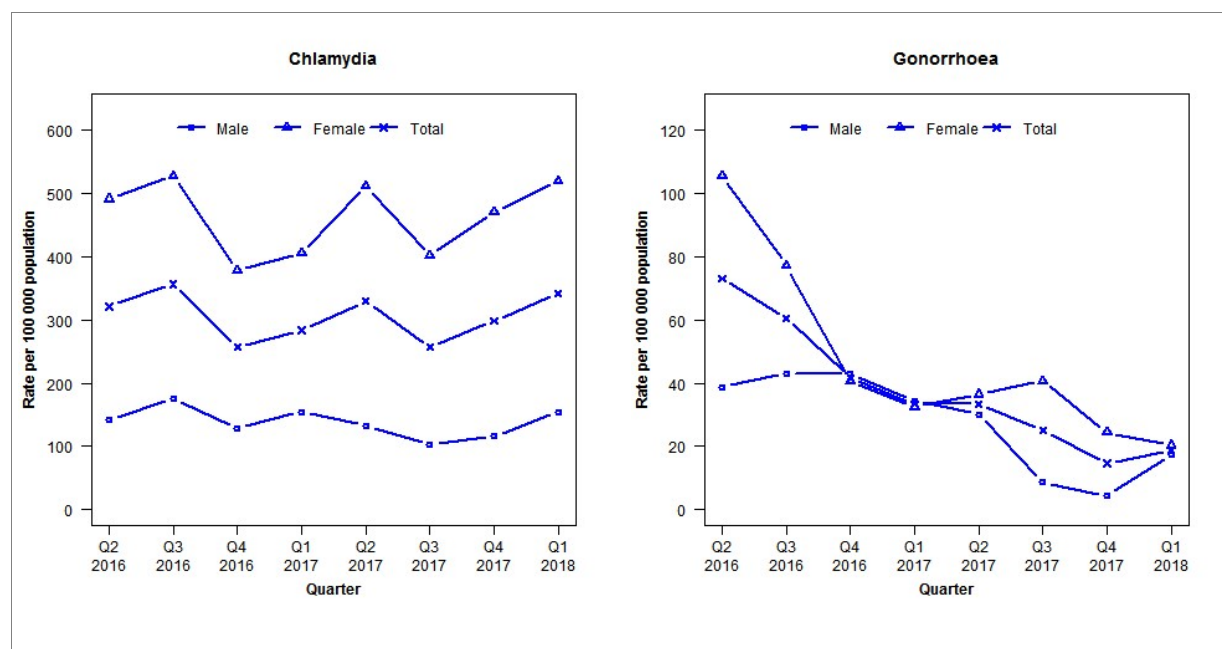
	Q2 2016	Q3 2016	Q4 2016	Q1 2017	Q2 2017	Q3 2017	Q4 2017	Q1 2018
<b>Number of lab-confirmed cases<sup>1</sup></b>	53	46	37	48	40	34	36	49
<i>Female</i>	33	24	21	28	20	19	17	18
<i>Male</i>	20	15	16	20	17	10	19	31
<b>Tests per 100 000 population<sup>2</sup></b>	2079	2101	1969	2193	2035	2136	1931	2206

<sup>1</sup>Total includes cases where sex is not reported

<sup>2</sup>Denominator = Statistics New Zealand mid-year population estimates

## Laboratory surveillance of chlamydia and gonorrhoea: January - March 2018

Quarterly chlamydia and gonorrhoea rates (male, female and total<sup>1</sup> population), April 2016 to March 2018



<sup>1</sup>Total includes cases where sex is not reported

Denominator = Statistics New Zealand mid-year population estimates

Note: Data processing methods allow for exclusion of repeat tests. Gonorrhoea rates for males are based on less than five cases in some quarters.

### Number of lab confirmed chlamydia cases (male, female and total population) and number of tests per 100 000 population, April 2016 to March 2018

	Q2 2016	Q3 2016	Q4 2016	Q1 2017	Q2 2017	Q3 2017	Q4 2017	Q1 2018
<b>Number of lab-confirmed cases<sup>1</sup></b>	154	171	123	136	158	123	143	164
<i>Female</i>	121	130	93	100	126	99	116	128
<i>Male</i>	33	41	30	36	31	24	27	36
<b>Tests per 100 000 population<sup>2</sup></b>	2340	2352	2254	2440	2523	2402	2348	2521

<sup>1</sup>Total includes cases where sex is not reported

<sup>2</sup>Denominator = Statistics New Zealand mid-year population estimates

### Number of lab confirmed gonorrhoea cases (female, male and total population) and number of tests per 100 000 population, April 2016 to March 2018

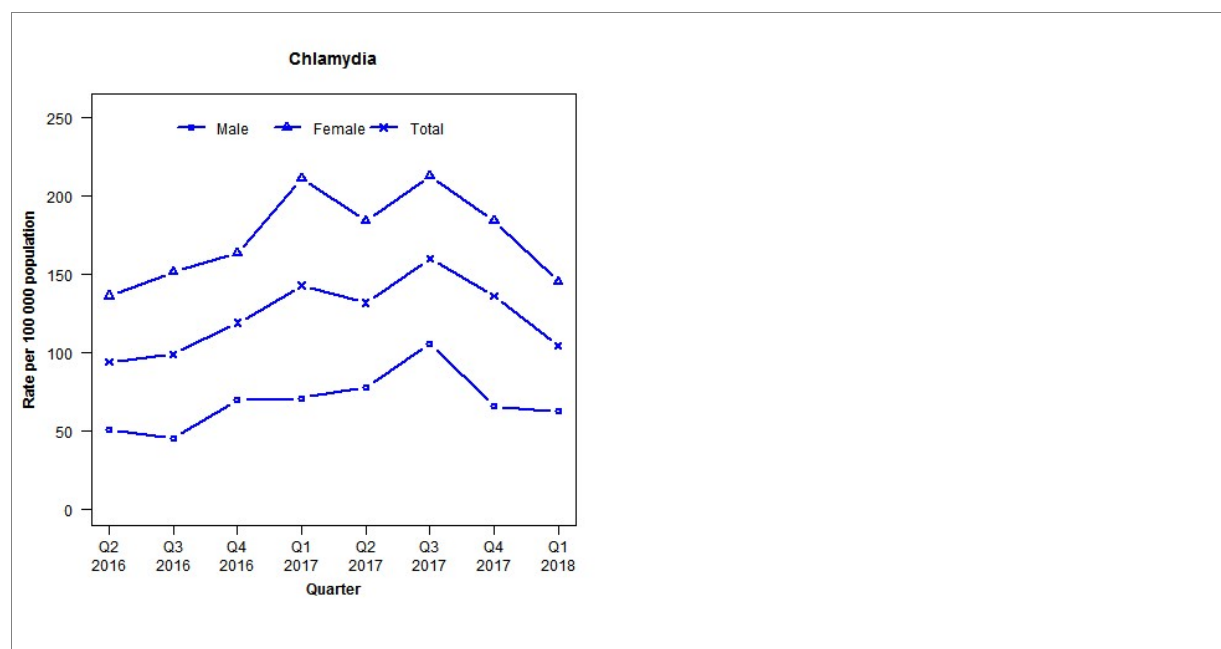
	Q2 2016	Q3 2016	Q4 2016	Q1 2017	Q2 2017	Q3 2017	Q4 2017	Q1 2018
<b>Number of lab-confirmed cases<sup>1</sup></b>	35	29	20	16	16	12	7	9
<i>Female</i>	26	19	10	8	9	10	6	5
<i>Male</i>	9	10	10	8	7	2	1	4
<b>Tests per 100 000 population<sup>2</sup></b>	2373	2365	2294	2473	2542	2427	2388	2540

<sup>1</sup>Total includes cases where sex is not reported

<sup>2</sup>Denominator = Statistics New Zealand mid-year population estimates

## Laboratory surveillance of chlamydia and gonorrhoea: January - March 2018

Quarterly chlamydia and gonorrhoea rates (male, female and total<sup>1</sup> population), April 2016 to March 2018



<sup>1</sup>Total includes cases where sex is not reported

Denominator = Statistics New Zealand mid-year population estimates

Note: Data processing methods allow for exclusion of repeat tests. Gonorrhoea rates are not presented as there are fewer than five cases in many quarters. From 19 January 2017 NAAT testing was introduced for all gonorrhoea specimens in one of the two laboratories.

### Number of lab confirmed chlamydia cases (male, female and total population) and number of tests per 100 000 population, April 2016 to March 2018

	Q2 2016	Q3 2016	Q4 2016	Q1 2017	Q2 2017	Q3 2017	Q4 2017	Q1 2018
<b>Number of lab-confirmed cases<sup>1</sup></b>	109	115	138	167	154	187	159	122
<i>Female</i>	80	89	96	125	109	126	109	86
<i>Male</i>	29	26	40	41	45	61	38	36
<b>Tests per 100 000 population<sup>2</sup></b>	1984	1829	1850	2062	1995	2148	1975	2081

<sup>1</sup>Total includes cases where sex is not reported

<sup>2</sup>Denominator = Statistics New Zealand mid-year population estimates

### Number of lab confirmed gonorrhoea cases (female, male and total population) and number of tests per 100 000 population, April 2016 to March 2018

	Q2 2016	Q3 2016	Q4 2016	Q1 2017	Q2 2017	Q3 2017	Q4 2017	Q1 2018
<b>Number of lab-confirmed cases<sup>1</sup></b>	1	5	10	9	6	4	0	10
<i>Female</i>	0	1	2	0	2	1	0	5
<i>Male</i>	1	4	8	9	4	3	0	5
<b>Tests per 100 000 population<sup>2</sup></b>	2538	2412	2365	2584	2473	2676	2457	2558

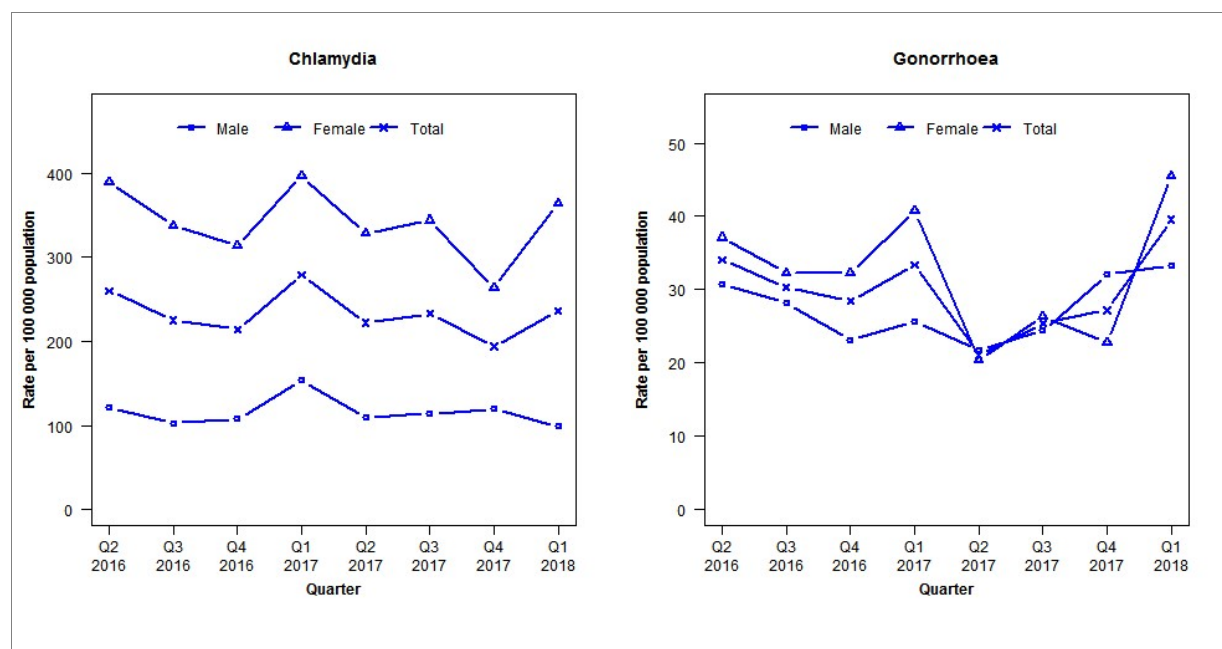
<sup>1</sup>Total includes cases where sex is not reported

<sup>2</sup>Denominator = Statistics New Zealand mid-year population estimates



## Laboratory surveillance of chlamydia and gonorrhoea: January - March 2018

Quarterly chlamydia and gonorrhoea rates (male, female and total<sup>1</sup> population), April 2016 to March 2018



<sup>1</sup>Total includes cases where sex is not reported

Denominator = Statistics New Zealand mid-year population estimates

Note: Data processing methods allow for exclusion of repeat tests.

### Number of lab confirmed chlamydia cases (male, female and total population) and number of tests per 100 000 population, April 2016 to March 2018

	Q2 2016	Q3 2016	Q4 2016	Q1 2017	Q2 2017	Q3 2017	Q4 2017	Q1 2018
<b>Number of lab-confirmed cases<sup>1</sup></b>	420	363	346	451	359	376	313	381
<i>Female</i>	325	282	262	331	274	287	220	304
<i>Male</i>	95	80	84	120	85	89	93	77
<b>Tests per 100 000 population<sup>2</sup></b>	2154	2009	1900	2132	2000	2106	1933	2261

<sup>1</sup>Total includes cases where sex is not reported

<sup>2</sup>Denominator = Statistics New Zealand mid-year population estimates

### Number of lab confirmed gonorrhoea cases (female, male and total population) and number of tests per 100 000 population, April 2016 to March 2018

	Q2 2016	Q3 2016	Q4 2016	Q1 2017	Q2 2017	Q3 2017	Q4 2017	Q1 2018
<b>Number of lab-confirmed cases<sup>1</sup></b>	55	49	46	54	34	41	44	64
<i>Female</i>	31	27	27	34	17	22	19	38
<i>Male</i>	24	22	18	20	17	19	25	26
<b>Tests per 100 000 population<sup>2</sup></b>	2291	2139	2021	2261	2125	2243	2062	2411

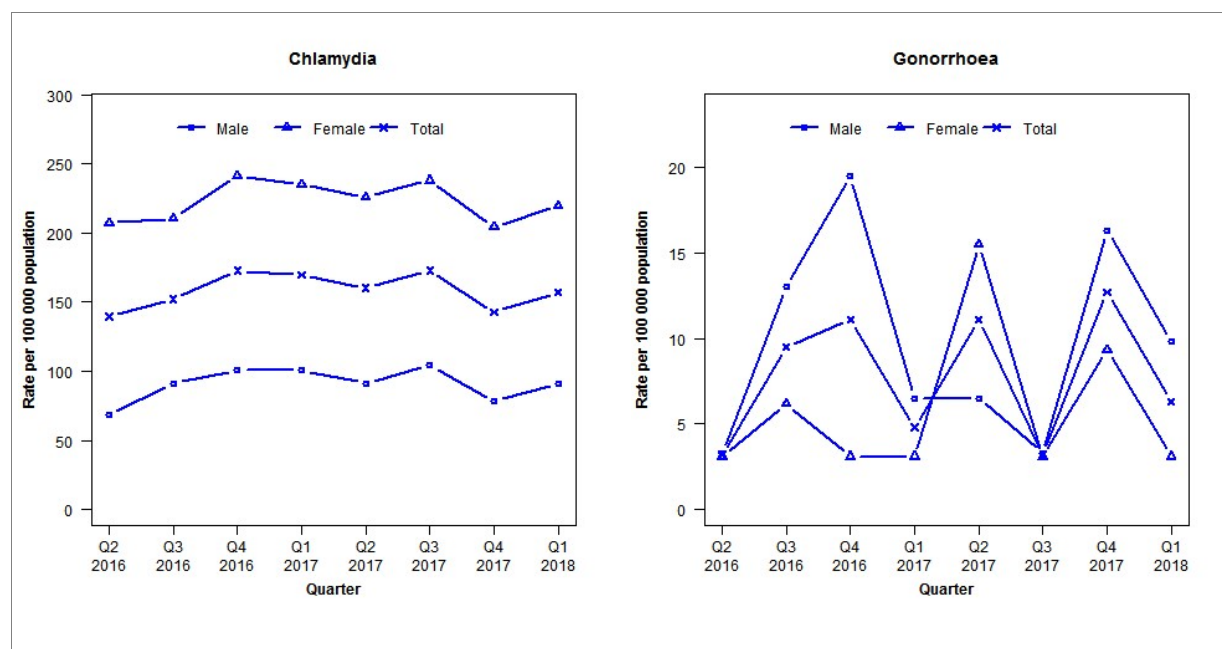
<sup>1</sup>Total includes cases where sex is not reported

<sup>2</sup>Denominator = Statistics New Zealand mid-year population estimates



## Laboratory surveillance of chlamydia and gonorrhoea: January - March 2018

Quarterly chlamydia and gonorrhoea rates (male, female and total<sup>1</sup> population), April 2016 to March 2018



<sup>1</sup>Total includes cases where sex is not reported

Denominator = Statistics New Zealand mid-year population estimates

Note: Data processing methods allow for exclusion of repeat tests. Gonorrhoea rates for males and females are based on less than five cases in many quarters.

### Number of lab confirmed chlamydia cases (male, female and total population) and number of tests per 100 000 population, April 2016 to March 2018

	Q2 2016	Q3 2016	Q4 2016	Q1 2017	Q2 2017	Q3 2017	Q4 2017	Q1 2018
<b>Number of lab-confirmed cases<sup>1</sup></b>	88	96	109	107	101	109	90	99
<i>Female</i>	67	68	78	76	73	77	66	71
<i>Male</i>	21	28	31	31	28	32	24	28
<b>Tests per 100 000 population<sup>2</sup></b>	1808	1853	1748	1834	1743	1848	1711	1786

<sup>1</sup>Total includes cases where sex is not reported

<sup>2</sup>Denominator = Statistics New Zealand mid-year population estimates

### Number of lab confirmed gonorrhoea cases (female, male and total population) and number of tests per 100 000 population, April 2016 to March 2018

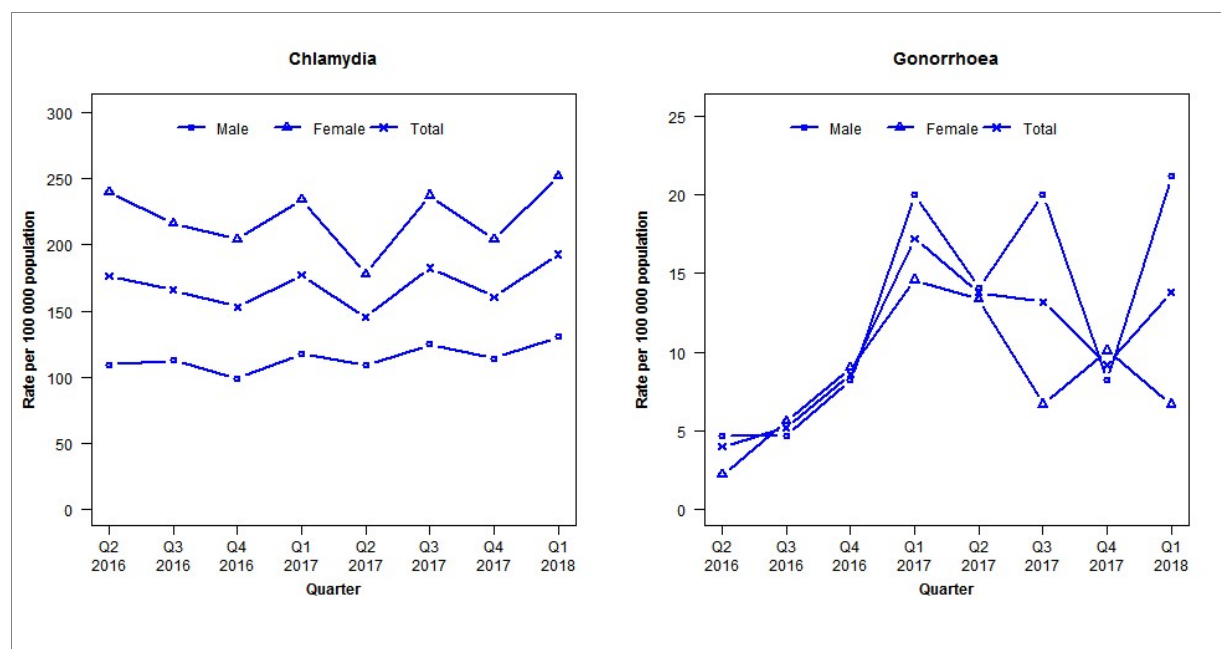
	Q2 2016	Q3 2016	Q4 2016	Q1 2017	Q2 2017	Q3 2017	Q4 2017	Q1 2018
<b>Number of lab-confirmed cases<sup>1</sup></b>	2	6	7	3	7	2	8	4
<i>Female</i>	1	2	1	1	5	1	3	1
<i>Male</i>	1	4	6	2	2	1	5	3
<b>Tests per 100 000 population<sup>2</sup></b>	1832	2300	2156	2243	2217	2306	2106	2026

<sup>1</sup>Total includes cases where sex is not reported

<sup>2</sup>Denominator = Statistics New Zealand mid-year population estimates

## Laboratory surveillance of chlamydia and gonorrhoea: January - March 2018

Quarterly chlamydia and gonorrhoea rates (male, female and total<sup>1</sup> population), April 2016 to March 2018



<sup>1</sup>Total includes cases where sex is not reported

Denominator = Statistics New Zealand mid-year population estimates

Note: Data processing procedures allow for exclusion of repeat tests. Gonorrhoea rates for males and females are based on less than five cases in some quarters.

### Number of lab confirmed chlamydia cases (male, female and total population) and number of tests per 100 000 population, April 2016 to March 2018

	Q2 2016	Q3 2016	Q4 2016	Q1 2017	Q2 2017	Q3 2017	Q4 2017	Q1 2018
<b>Number of lab-confirmed cases<sup>1</sup></b>	307	289	267	309	253	318	280	336
<i>Female</i>	214	193	182	209	159	212	182	225
<i>Male</i>	93	96	84	100	93	106	97	111
<b>Tests per 100 000 population<sup>2</sup></b>	1878	1837	1841	2017	1927	1971	1878	1979

<sup>1</sup>Total includes cases where sex is not reported

<sup>2</sup>Denominator = Statistics New Zealand mid-year population estimates

### Number of lab confirmed gonorrhoea cases (female, male and total population) and number of tests per 100 000 population, April 2016 to March 2018

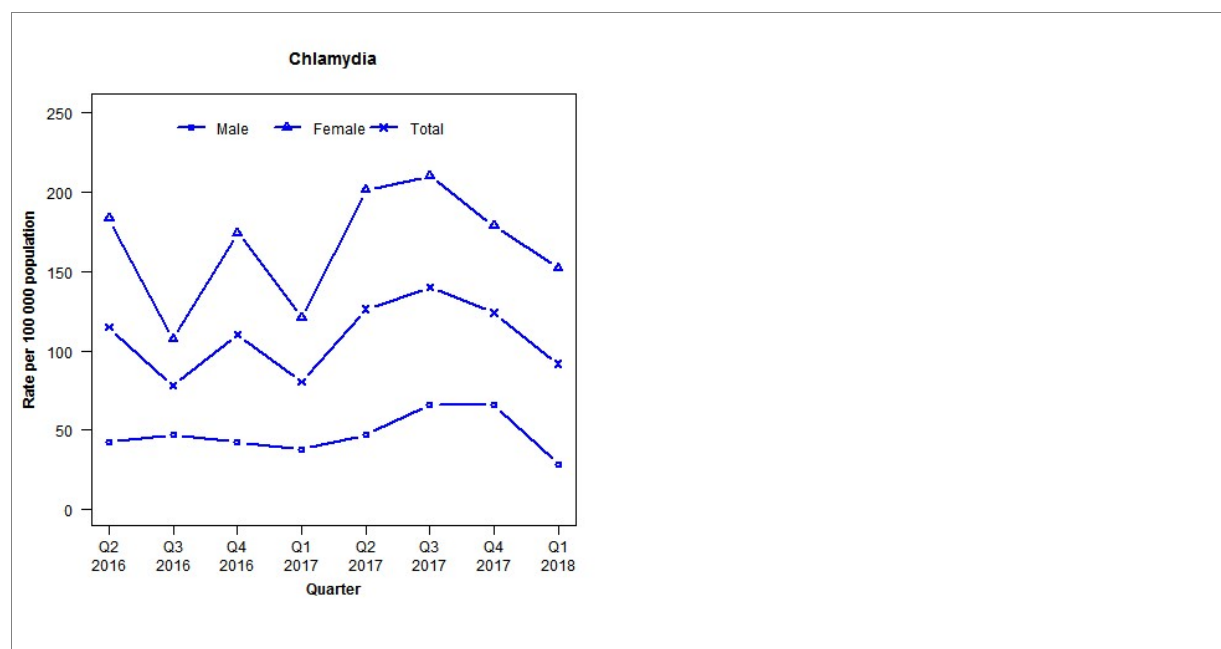
	Q2 2016	Q3 2016	Q4 2016	Q1 2017	Q2 2017	Q3 2017	Q4 2017	Q1 2018
<b>Number of lab-confirmed cases<sup>1</sup></b>	7	9	15	30	24	23	16	24
<i>Female</i>	2	5	8	13	12	6	9	6
<i>Male</i>	4	4	7	17	12	17	7	18
<b>Tests per 100 000 population<sup>2</sup></b>	1909	1865	1871	2047	1954	1997	1911	1995

<sup>1</sup>Total includes cases where sex is not reported

<sup>2</sup>Denominator = Statistics New Zealand mid-year population estimates

## Laboratory surveillance of chlamydia and gonorrhoea: January - March 2018

Quarterly chlamydia and gonorrhoea rates (male, female and total<sup>1</sup> population), April 2016 to March 2018



<sup>1</sup>Total includes cases where sex is not reported

Denominator = Statistics New Zealand mid-year population estimates

Note: Data processing methods allow for exclusion of repeat tests. Gonorrhoea rates are not presented as there are fewer than five cases in all quarters.

### Number of lab confirmed chlamydia cases (male, female and total population) and number of tests per 100 000 population, April 2016 to March 2018

	Q2 2016	Q3 2016	Q4 2016	Q1 2017	Q2 2017	Q3 2017	Q4 2017	Q1 2018
<b>Number of lab-confirmed cases<sup>1</sup></b>	50	34	48	35	55	61	54	40
<i>Female</i>	41	24	39	27	45	47	40	34
<i>Male</i>	9	10	9	8	10	14	14	6
<b>Tests per 100 000 population<sup>2</sup></b>	1491	1351	1455	1193	1340	1579	1386	1631

<sup>1</sup>Total includes cases where sex is not reported

<sup>2</sup>Denominator = Statistics New Zealand mid-year population estimates

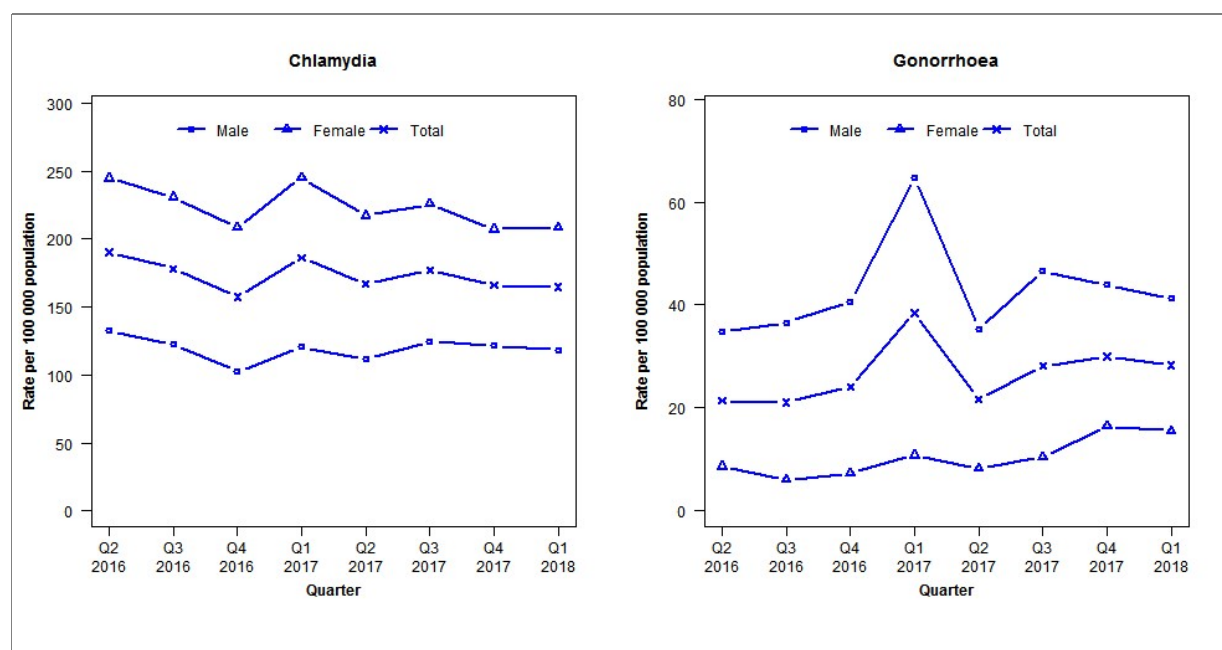
### Number of lab confirmed gonorrhoea cases (female, male and total population) and number of tests per 100 000 population, April 2016 to March 2018

	Q2 2016	Q3 2016	Q4 2016	Q1 2017	Q2 2017	Q3 2017	Q4 2017	Q1 2018
<b>Number of lab-confirmed cases<sup>1</sup></b>	0	0	2	2	1	4	3	4
<i>Female</i>	0	0	1	1	0	3	2	2
<i>Male</i>	0	0	1	1	1	1	1	1
<b>Tests per 100 000 population<sup>2</sup></b>	1604	1436	1549	1227	1395	1629	1416	1654

<sup>1</sup>Total includes cases where sex is not reported

<sup>2</sup>Denominator = Statistics New Zealand mid-year population estimates

## Laboratory surveillance of chlamydia and gonorrhoea: January - March 2018

Quarterly chlamydia and gonorrhoea rates (male, female and total<sup>1</sup> population), April 2016 to March 2018<sup>1</sup>Total includes cases where sex is not reported

Denominator = Statistics New Zealand mid-year population estimates

Note: Data processing methods allow for exclusion of repeat tests.

## Number of lab confirmed chlamydia cases (male, female and total population) and number of tests per 100 000 population, April 2016 to March 2018

	Q2 2016	Q3 2016	Q4 2016	Q1 2017	Q2 2017	Q3 2017	Q4 2017	Q1 2018
<b>Number of lab-confirmed cases<sup>1</sup></b>	862	807	713	843	755	802	752	746
<i>Female</i>	567	535	483	568	503	523	480	483
<i>Male</i>	293	271	226	267	246	276	269	261
<b>Tests per 100 000 population<sup>2</sup></b>	2822	2626	2413	2807	2656	2850	2699	2910

<sup>1</sup>Total includes cases where sex is not reported<sup>2</sup>Denominator = Statistics New Zealand mid-year population estimates

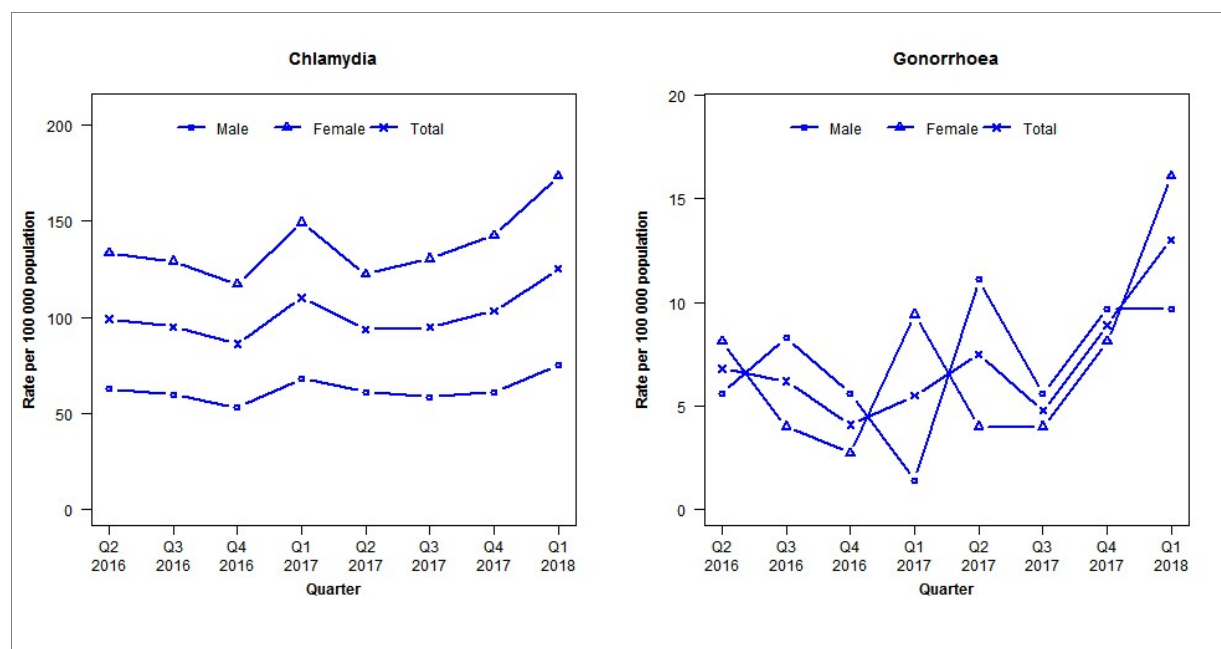
## Number of lab confirmed gonorrhoea cases (female, male and total population) and number of tests per 100 000 population, April 2016 to March 2018

	Q2 2016	Q3 2016	Q4 2016	Q1 2017	Q2 2017	Q3 2017	Q4 2017	Q1 2018
<b>Number of lab-confirmed cases<sup>1</sup></b>	97	95	109	174	98	127	136	128
<i>Female</i>	20	14	17	25	19	24	38	36
<i>Male</i>	77	81	90	143	78	103	97	91
<b>Tests per 100 000 population<sup>2</sup></b>	2839	2627	2417	2828	2672	2872	2718	2929

<sup>1</sup>Total includes cases where sex is not reported<sup>2</sup>Denominator = Statistics New Zealand mid-year population estimates

## Laboratory surveillance of chlamydia and gonorrhoea: January - March 2018

Quarterly chlamydia and gonorrhoea rates (male, female and total<sup>1</sup> population), April 2016 to March 2018



<sup>1</sup>Total includes cases where sex is not reported

Denominator = Statistics New Zealand mid-year population estimates

Note: Data processing procedures allow for exclusion of repeat tests. Gonorrhoea rates for males and females are based on less than five cases in some quarters.

### Number of lab confirmed chlamydia cases (male, female and total population) and number of tests per 100 000 population, April 2016 to March 2018

	Q2 2016	Q3 2016	Q4 2016	Q1 2017	Q2 2017	Q3 2017	Q4 2017	Q1 2018
<b>Number of lab-confirmed cases<sup>1</sup></b>	145	139	126	161	137	139	151	183
<i>Female</i>	99	96	87	111	91	97	106	129
<i>Male</i>	45	43	38	49	44	42	44	54
<b>Tests per 100 000 population<sup>2</sup></b>	1555	1484	1432	1624	1530	1597	1564	1750

<sup>1</sup>Total includes cases where sex is not reported

<sup>2</sup>Denominator = Statistics New Zealand mid-year population estimates

### Number of lab confirmed gonorrhoea cases (female, male and total population) and number of tests per 100 000 population, April 2016 to March 2018

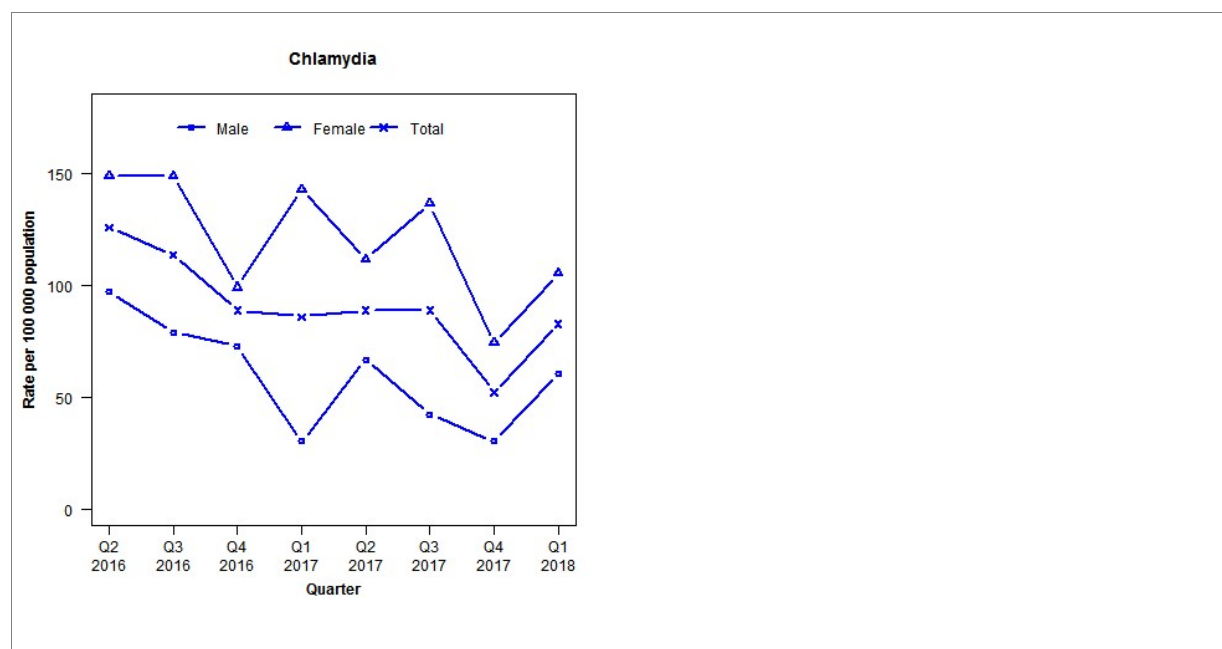
	Q2 2016	Q3 2016	Q4 2016	Q1 2017	Q2 2017	Q3 2017	Q4 2017	Q1 2018
<b>Number of lab-confirmed cases<sup>1</sup></b>	10	9	6	8	11	7	13	19
<i>Female</i>	6	3	2	7	3	3	6	12
<i>Male</i>	4	6	4	1	8	4	7	7
<b>Tests per 100 000 population<sup>2</sup></b>	1558	1486	1437	1631	1532	1599	1569	1756

<sup>1</sup>Total includes cases where sex is not reported

<sup>2</sup>Denominator = Statistics New Zealand mid-year population estimates

## Laboratory surveillance of chlamydia and gonorrhoea: January - March 2018

Quarterly chlamydia and gonorrhoea rates (male, female and total<sup>1</sup> population), April 2016 to March 2018



<sup>1</sup>Total includes cases where sex is not reported

Denominator = Statistics New Zealand mid-year population estimates

Note: Data processing methods allow for exclusion of repeat tests. Gonorrhoea rates are not presented as there are fewer than five cases in all quarters.

### Number of lab confirmed chlamydia cases (male, female and total population) and number of tests per 100 000 population, April 2016 to March 2018

	Q2 2016	Q3 2016	Q4 2016	Q1 2017	Q2 2017	Q3 2017	Q4 2017	Q1 2018
<b>Number of lab-confirmed cases<sup>1</sup></b>	41	37	29	28	29	29	17	27
<i>Female</i>	24	24	16	23	18	22	12	17
<i>Male</i>	16	13	12	5	11	7	5	10
<b>Tests per 100 000 population<sup>2</sup></b>	1755	1564	1481	1506	1451	1595	1377	1666

<sup>1</sup>Total includes cases where sex is not reported

<sup>2</sup>Denominator = Statistics New Zealand mid-year population estimates

### Number of lab confirmed gonorrhoea cases (female, male and total population) and number of tests per 100 000 population, April 2016 to March 2018

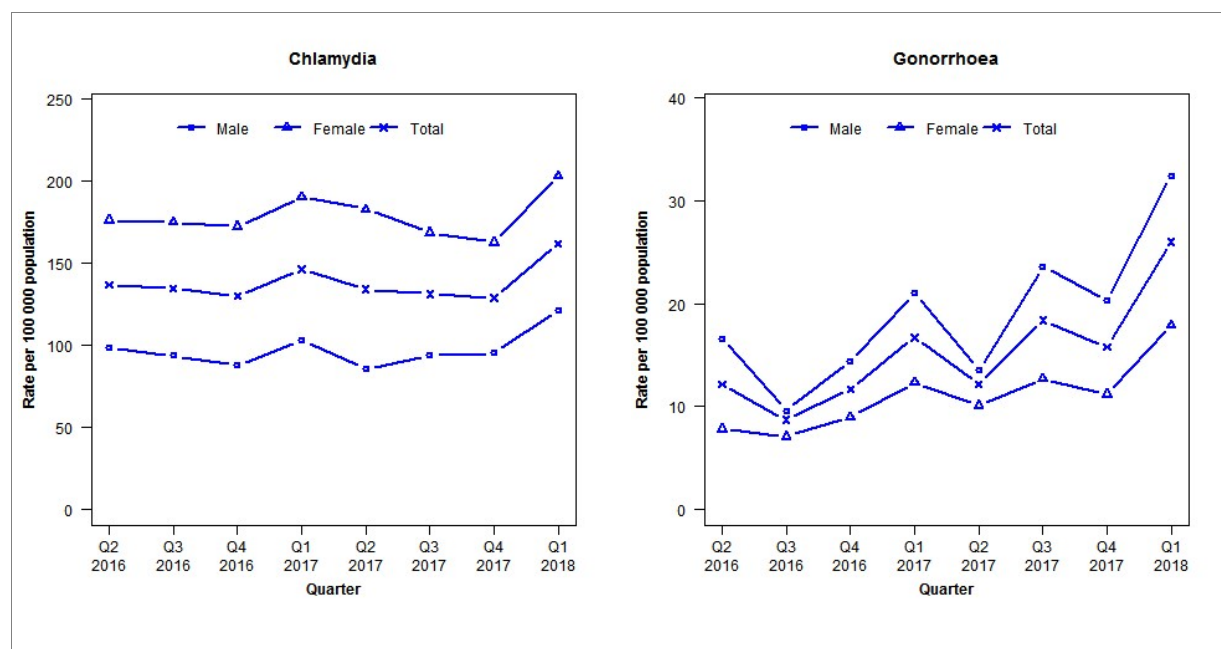
	Q2 2016	Q3 2016	Q4 2016	Q1 2017	Q2 2017	Q3 2017	Q4 2017	Q1 2018
<b>Number of lab-confirmed cases<sup>1</sup></b>	2	1	2	0	1	1	3	2
<i>Female</i>	1	1	1	0	1	0	2	1
<i>Male</i>	1	0	1	0	0	1	1	1
<b>Tests per 100 000 population<sup>2</sup></b>	1755	1564	1481	1506	1451	1595	1377	1666

<sup>1</sup>Total includes cases where sex is not reported

<sup>2</sup>Denominator = Statistics New Zealand mid-year population estimates

## Laboratory surveillance of chlamydia and gonorrhoea: January - March 2018

Quarterly chlamydia and gonorrhoea rates (male, female and total<sup>1</sup> population), April 2016 to March 2018



<sup>1</sup>Total includes cases where sex is not reported

Denominator = Statistics New Zealand mid-year population estimates

Note: Data processing methods allow for exclusion of repeat tests.

### Number of lab confirmed chlamydia cases (male, female and total population) and number of tests per 100 000 population, April 2016 to March 2018

	Q2 2016	Q3 2016	Q4 2016	Q1 2017	Q2 2017	Q3 2017	Q4 2017	Q1 2018
<b>Number of lab-confirmed cases<sup>1</sup></b>	737	724	699	788	722	706	693	872
<i>Female</i>	471	468	461	509	489	451	435	543
<i>Male</i>	266	254	238	279	232	254	258	328
<b>Tests per 100 000 population<sup>2</sup></b>	2305	2298	2132	2441	2322	2317	2231	2645

<sup>1</sup>Total includes cases where sex is not reported

<sup>2</sup>Denominator = Statistics New Zealand mid-year population estimates

### Number of lab confirmed gonorrhoea cases (female, male and total population) and number of tests per 100 000 population, April 2016 to March 2018

	Q2 2016	Q3 2016	Q4 2016	Q1 2017	Q2 2017	Q3 2017	Q4 2017	Q1 2018
<b>Number of lab-confirmed cases<sup>1</sup></b>	66	47	63	90	66	99	85	140
<i>Female</i>	21	19	24	33	27	34	30	48
<i>Male</i>	45	26	39	57	37	64	55	88
<b>Tests per 100 000 population<sup>2</sup></b>	2905	2907	2658	3023	2887	2902	2708	3192

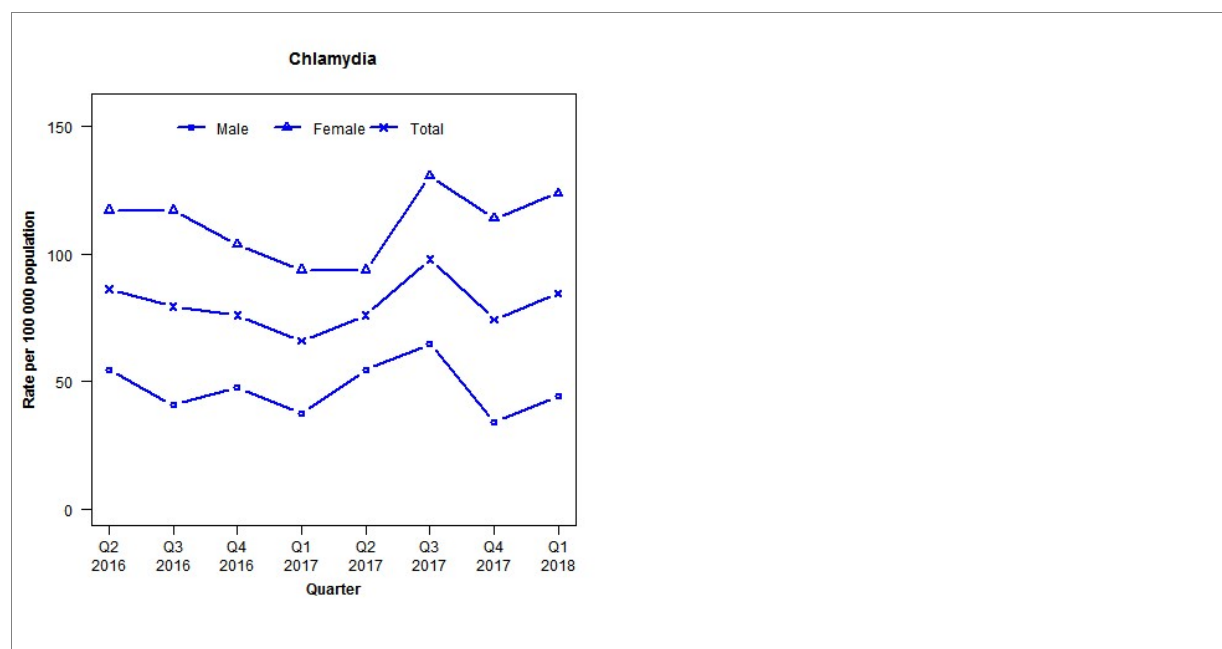
<sup>1</sup>Total includes cases where sex is not reported

<sup>2</sup>Denominator = Statistics New Zealand mid-year population estimates



## Laboratory surveillance of chlamydia and gonorrhoea: January - March 2018

Quarterly chlamydia and gonorrhoea rates (male, female and total<sup>1</sup> population), April 2016 to March 2018



<sup>1</sup>Total includes cases where sex is not reported

Denominator = Statistics New Zealand mid-year population estimates

Note: Data processing methods introduced allow for exclusion of repeat tests. Gonorrhoea rates are not presented as there are fewer than five cases in many quarters.

### Number of lab confirmed chlamydia cases (male, female and total population) and number of tests per 100 000 population, April 2016 to March 2018

	Q2 2016	Q3 2016	Q4 2016	Q1 2017	Q2 2017	Q3 2017	Q4 2017	Q1 2018
<b>Number of lab-confirmed cases<sup>1</sup></b>	51	47	45	39	45	58	44	50
<i>Female</i>	35	35	31	28	28	39	34	37
<i>Male</i>	16	12	14	11	16	19	10	13
<b>Tests per 100 000 population<sup>2</sup></b>	1511	1450	1285	1423	1227	1393	1183	1332

<sup>1</sup>Total includes cases where sex is not reported

<sup>2</sup>Denominator = Statistics New Zealand mid-year population estimates

### Number of lab confirmed gonorrhoea cases (female, male and total population) and number of tests per 100 000 population, April 2016 to March 2018

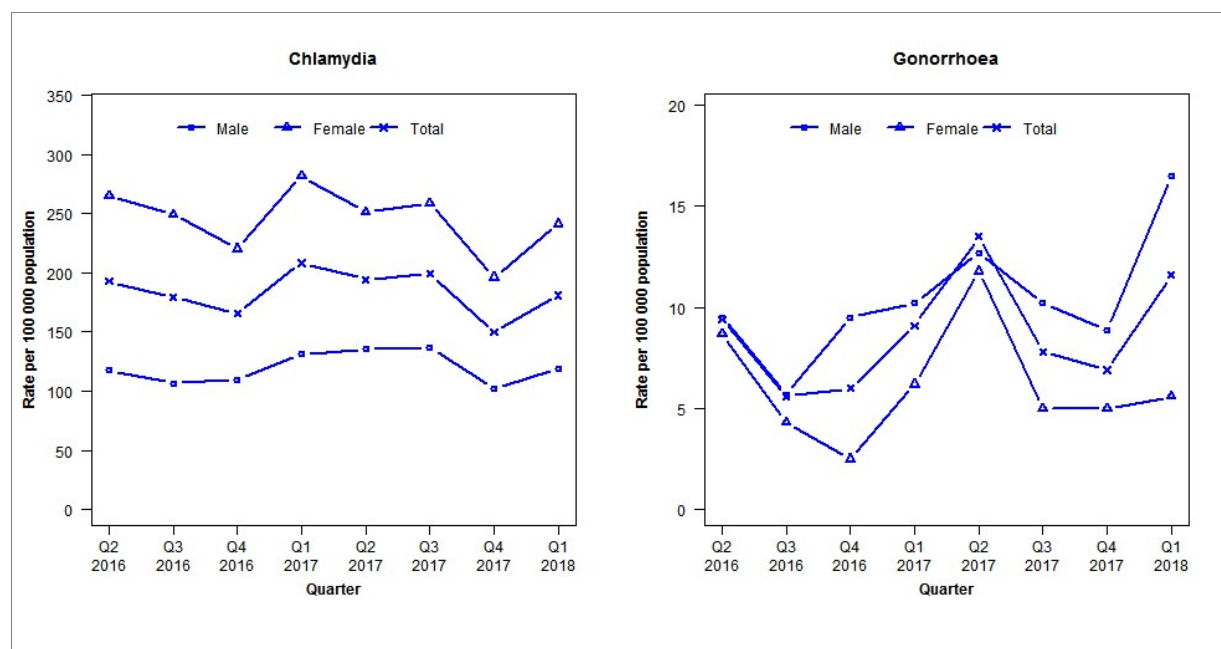
	Q2 2016	Q3 2016	Q4 2016	Q1 2017	Q2 2017	Q3 2017	Q4 2017	Q1 2018
<b>Number of lab-confirmed cases<sup>1</sup></b>	6	1	6	1	2	1	1	4
<i>Female</i>	3	0	2	1	1	1	1	0
<i>Male</i>	3	1	4	0	0	0	0	3
<b>Tests per 100 000 population<sup>2</sup></b>	1917	1849	1607	1829	1601	1766	1464	1656

<sup>1</sup>Total includes cases where sex is not reported

<sup>2</sup>Denominator = Statistics New Zealand mid-year population estimates

## Laboratory surveillance of chlamydia and gonorrhoea: January - March 2018

Quarterly chlamydia and gonorrhoea rates (male, female and total<sup>1</sup> population), April 2016 to March 2018



<sup>1</sup>Total includes cases where sex is not reported

Denominator = Statistics New Zealand mid-year population estimates

Note: Data processing methods allow for exclusion of repeat tests. Gonorrhoea rates for females are based on less than five cases in one quarter.

### Number of lab confirmed chlamydia cases (male, female and total population) and number of tests per 100 000 population, April 2016 to March 2018

	Q2 2016	Q3 2016	Q4 2016	Q1 2017	Q2 2017	Q3 2017	Q4 2017	Q1 2018
<b>Number of lab-confirmed cases<sup>1</sup></b>	614	571	528	664	619	634	477	577
<i>Female</i>	427	402	355	454	405	417	316	389
<i>Male</i>	185	168	173	207	213	215	161	187
<b>Tests per 100 000 population<sup>2</sup></b>	2578	2487	2197	2429	2472	2560	2234	2593

<sup>1</sup>Total includes cases where sex is not reported

<sup>2</sup>Denominator = Statistics New Zealand mid-year population estimates

### Number of lab confirmed gonorrhoea cases (female, male and total population) and number of tests per 100 000 population, April 2016 to March 2018

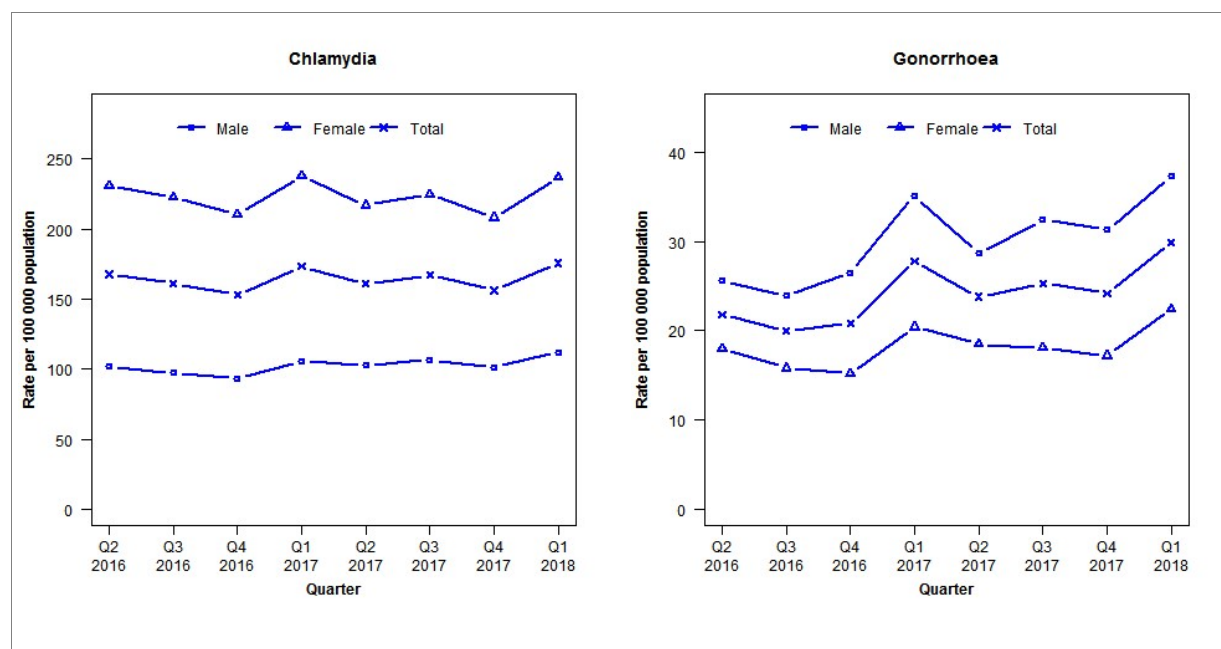
	Q2 2016	Q3 2016	Q4 2016	Q1 2017	Q2 2017	Q3 2017	Q4 2017	Q1 2018
<b>Number of lab-confirmed cases<sup>1</sup></b>	30	18	19	29	43	25	22	37
<i>Female</i>	14	7	4	10	19	8	8	9
<i>Male</i>	15	9	15	16	20	16	14	26
<b>Tests per 100 000 population<sup>2</sup></b>	2595	2504	2213	2446	2486	2574	2247	2612

<sup>1</sup>Total includes cases where sex is not reported

<sup>2</sup>Denominator = Statistics New Zealand mid-year population estimates

## Laboratory surveillance of chlamydia and gonorrhoea: January - March 2018

Quarterly chlamydia and gonorrhoea rates (male, female and total<sup>1</sup> population), April 2016 to March 2018



<sup>1</sup>Total includes cases where sex is not reported

Denominator = Statistics New Zealand mid-year population estimates

Note: Data processing methods allow for exclusion of repeat tests. NAAT (nucleic acid amplification testing) for gonorrhoea has been introduced in the majority of laboratories since 2012. Refer to DHB level reports for further details. Waikato Hospital data missing in previous 2017 quarterly reports (Q1–Q3) have been included for all quarters in 2017 in this report.

### Number of lab confirmed chlamydia cases (male, female and total population) and number of tests per 100 000 population, April 2016 to March 2018

	Q2 2016	Q3 2016	Q4 2016	Q1 2017	Q2 2017	Q3 2017	Q4 2017	Q1 2018
<b>Number of lab-confirmed cases<sup>1</sup></b>	7863	7567	7175	8129	7555	7838	7324	8246
<i>Female</i>	5499	5305	5008	5665	5167	5352	4958	5650
<i>Male</i>	2357	2247	2154	2447	2372	2464	2345	2588
<b>Tests per 100 000 population<sup>2</sup></b>	2355	2272	2103	2333	2259	2342	2220	2470

<sup>1</sup>Total includes cases where sex is not reported

<sup>2</sup>Denominator = Statistics New Zealand mid-year population estimates

### Number of lab confirmed gonorrhoea cases (female, male and total population) and number of tests per 100 000 population, April 2016 to March 2018

	Q2 2016	Q3 2016	Q4 2016	Q1 2017	Q2 2017	Q3 2017	Q4 2017	Q1 2018
<b>Number of lab-confirmed cases<sup>1</sup></b>	1023	940	976	1305	1115	1187	1134	1403
<i>Female</i>	430	377	361	485	441	432	409	533
<i>Male</i>	591	552	611	811	662	748	723	860
<b>Tests per 100 000 population<sup>2</sup></b>	2551	2452	2257	2511	2433	2527	2391	2623

<sup>1</sup>Total includes cases where sex is not reported

<sup>2</sup>Denominator = Statistics New Zealand mid-year population estimates