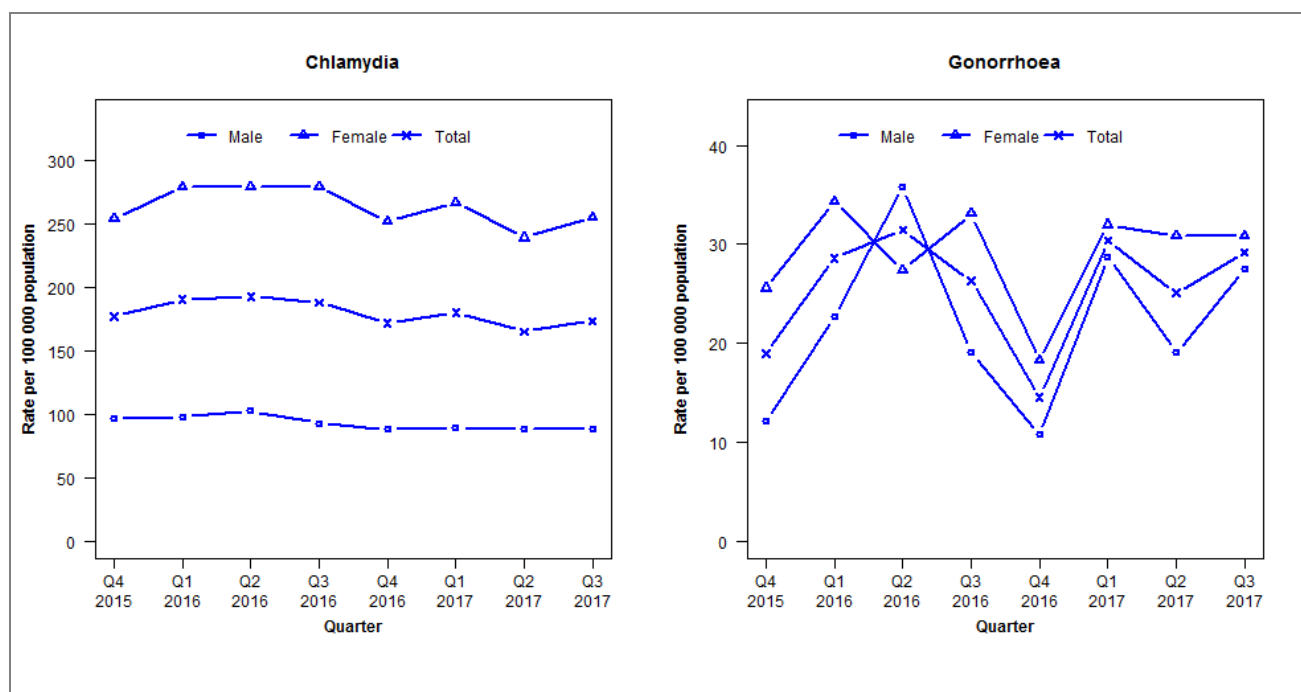


## Laboratory surveillance of chlamydia and gonorrhoea: July - September 2017

Quarterly chlamydia and gonorrhoea rates (male, female and total<sup>1</sup> population), October 2015 to September 2017



<sup>1</sup>Total includes cases where sex is not reported  
Denominator = Statistics New Zealand mid-year population estimates

Note: Data processing methods allow for exclusion of repeat tests.

### Number of lab confirmed chlamydia cases (male, female and total population) and number of tests per 100 000 population, October 2015 to September 2017

	Q4 2015	Q1 2016	Q2 2016	Q3 2016	Q4 2016	Q1 2017	Q2 2017	Q3 2017
<b>Number of lab-confirmed cases<sup>1</sup></b>	298	326	330	322	294	308	283	297
<i>Female</i>	218	244	244	244	220	233	209	223
<i>Male</i>	80	82	86	78	74	75	74	74
<b>Tests per 100 000 population<sup>2</sup></b>	2029	1875	1866	1780	1686	1840	1861	1854

<sup>1</sup>Total includes cases where sex is not reported

<sup>2</sup>Denominator = Statistics New Zealand mid-year population estimates

### Number of lab confirmed gonorrhoea cases (female, male and total population) and number of tests per 100 000 population, October 2015 to September 2017

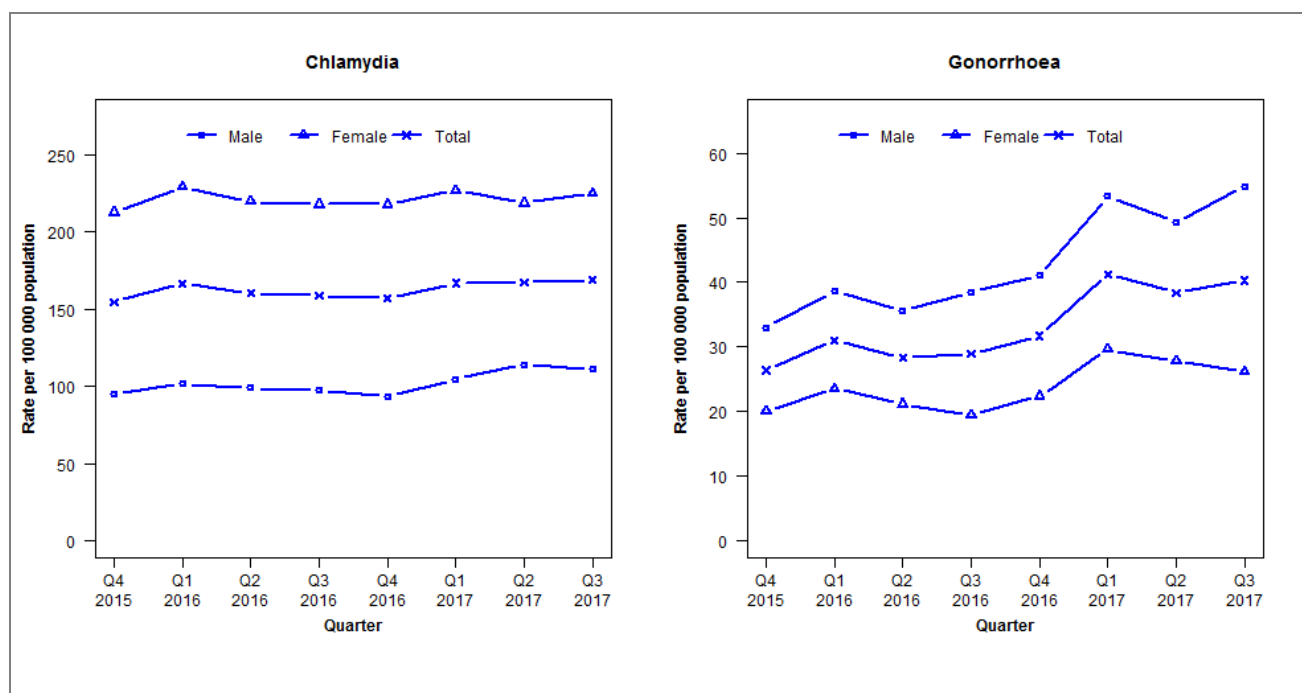
	Q4 2015	Q1 2016	Q2 2016	Q3 2016	Q4 2016	Q1 2017	Q2 2017	Q3 2017
<b>Number of lab-confirmed cases<sup>1</sup></b>	32	49	54	45	25	52	43	50
<i>Female</i>	22	30	24	29	16	28	27	27
<i>Male</i>	10	19	30	16	9	24	16	23
<b>Tests per 100 000 population<sup>2</sup></b>	2623	2634	2553	2313	2176	2322	2306	2276

<sup>1</sup>Total includes cases where sex is not reported

<sup>2</sup>Denominator = Statistics New Zealand mid-year population estimates

## Laboratory surveillance of chlamydia and gonorrhoea: July - September 2017

Quarterly chlamydia and gonorrhoea rates (male, female and total<sup>1</sup> population), October 2015 to September 2017



<sup>1</sup>Total includes cases where sex is not reported

Denominator = Statistics New Zealand mid-year population estimates

Note: Data processing methods allow for exclusion of repeat tests.

**Number of lab confirmed chlamydia cases (male, female and total population) and number of tests per 100 000 population, October 2015 to September 2017**

	Q4 2015	Q1 2016	Q2 2016	Q3 2016	Q4 2016	Q1 2017	Q2 2017	Q3 2017
<b>Number of lab-confirmed cases<sup>1</sup></b>	2455	2719	2616	2591	2558	2722	2729	2759
<i>Female</i>	1715	1900	1820	1804	1804	1880	1812	1862
<i>Male</i>	740	815	795	784	750	839	917	890
<b>Tests per 100 000 population<sup>2</sup></b>	2744	2701	2537	2447	2249	2460	2417	2502

<sup>1</sup>Total includes cases where sex is not reported

<sup>2</sup>Denominator = Statistics New Zealand mid-year population estimates

**Number of lab confirmed gonorrhoea cases (female, male and total population) and number of tests per 100 000 population, October 2015 to September 2017**

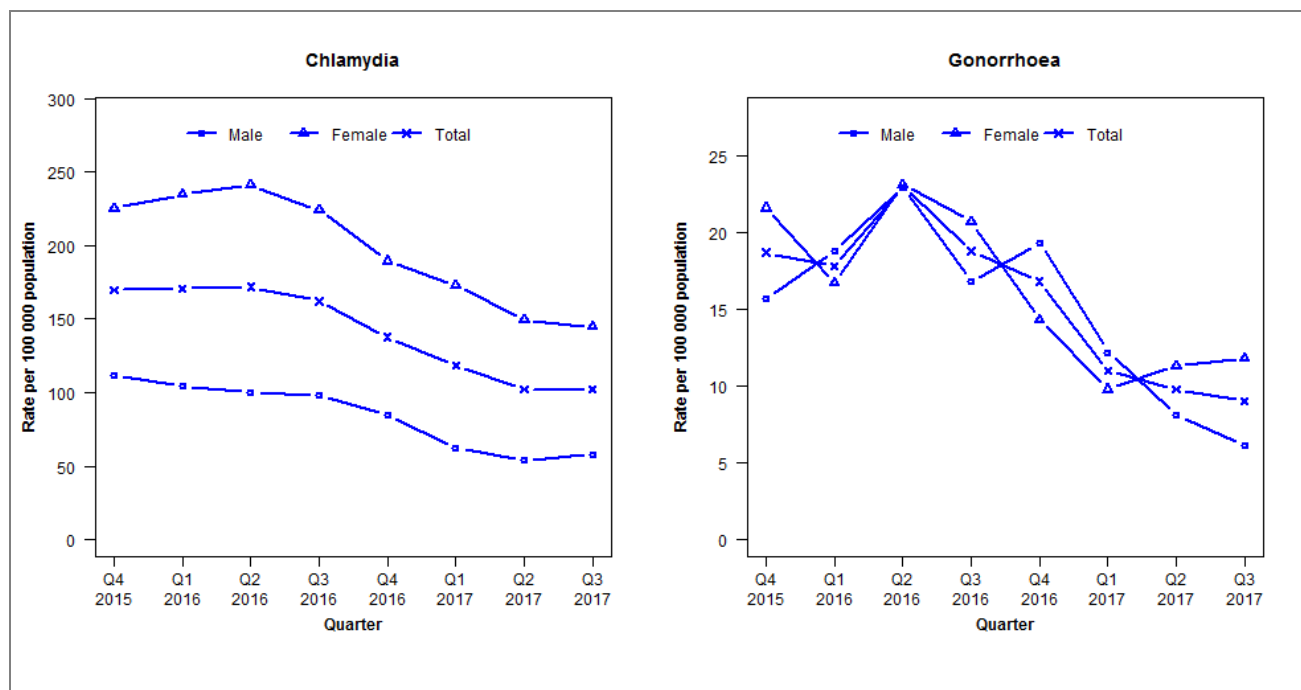
	Q4 2015	Q1 2016	Q2 2016	Q3 2016	Q4 2016	Q1 2017	Q2 2017	Q3 2017
<b>Number of lab-confirmed cases<sup>1</sup></b>	419	506	462	471	517	673	627	657
<i>Female</i>	162	196	176	162	186	245	230	217
<i>Male</i>	257	310	286	309	330	428	396	440
<b>Tests per 100 000 population<sup>2</sup></b>	2894	2992	2712	2605	2369	2627	2586	2695

<sup>1</sup>Total includes cases where sex is not reported

<sup>2</sup>Denominator = Statistics New Zealand mid-year population estimates

## Laboratory surveillance of chlamydia and gonorrhoea: July - September 2017

Quarterly chlamydia and gonorrhoea rates (male, female and total<sup>1</sup> population), October 2015 to September 2017



<sup>1</sup>Total includes cases where sex is not reported

Denominator = Statistics New Zealand mid-year population estimates

Note: Data processing methods allow for exclusion of repeat tests. Data not received from Waikato hospital for Q1 Qr2 or Q3 2017.

### Number of lab confirmed chlamydia cases (male, female and total population) and number of tests per 100 000 population, October 2015 to September 2017

	Q4 2015	Q1 2016	Q2 2016	Q3 2016	Q4 2016	Q1 2017	Q2 2017	Q3 2017
<b>Number of lab-confirmed cases<sup>1</sup></b>	663	682	687	648	551	474	409	409
<i>Female</i>	448	477	490	455	385	351	303	294
<i>Male</i>	215	205	197	193	166	123	106	114
<b>Tests per 100 000 population<sup>2</sup></b>	2308	2244	2262	2181	1993	1535	1478	1548

<sup>1</sup>Total includes cases where sex is not reported

<sup>2</sup>Denominator = Statistics New Zealand mid-year population estimates

### Number of lab confirmed gonorrhoea cases (female, male and total population) and number of tests per 100 000 population, October 2015 to September 2017

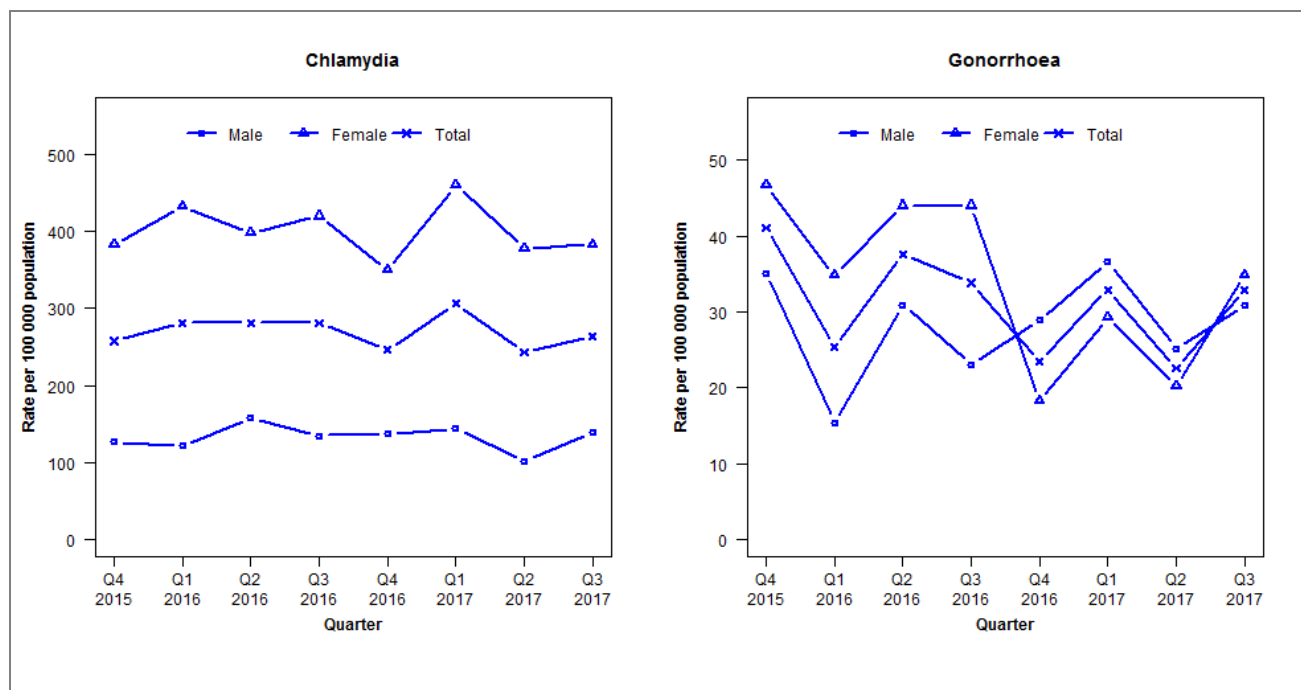
	Q4 2015	Q1 2016	Q2 2016	Q3 2016	Q4 2016	Q1 2017	Q2 2017	Q3 2017
<b>Number of lab-confirmed cases<sup>1</sup></b>	73	71	92	75	67	44	39	36
<i>Female</i>	43	34	47	42	29	20	23	24
<i>Male</i>	30	37	45	33	38	24	16	12
<b>Tests per 100 000 population<sup>2</sup></b>	2509	2589	2393	2207	2024	1536	1478	1548

<sup>1</sup>Total includes cases where sex is not reported

<sup>2</sup>Denominator = Statistics New Zealand mid-year population estimates

## Laboratory surveillance of chlamydia and gonorrhoea: July - September 2017

Quarterly chlamydia and gonorrhoea rates (male, female and total<sup>1</sup> population), October 2015 to September 2017



<sup>1</sup>Total includes cases where sex is not reported  
Denominator = Statistics New Zealand mid-year population estimates

Note: Data processing methods allow for exclusion of repeat tests.

### Number of lab confirmed chlamydia cases (male, female and total population) and number of tests per 100 000 population, October 2015 to September 2017

	Q4 2015	Q1 2016	Q2 2016	Q3 2016	Q4 2016	Q1 2017	Q2 2017	Q3 2017
<b>Number of lab-confirmed cases<sup>1</sup></b>	270	299	299	299	262	326	259	281
<i>Female</i>	205	236	217	229	191	251	206	209
<i>Male</i>	65	63	82	70	71	75	53	72
<b>Tests per 100 000 population<sup>2</sup></b>	3041	3030	2973	2851	2490	2830	2634	2641

<sup>1</sup>Total includes cases where sex is not reported

<sup>2</sup>Denominator = Statistics New Zealand mid-year population estimates

### Number of lab confirmed gonorrhoea cases (female, male and total population) and number of tests per 100 000 population, October 2015 to September 2017

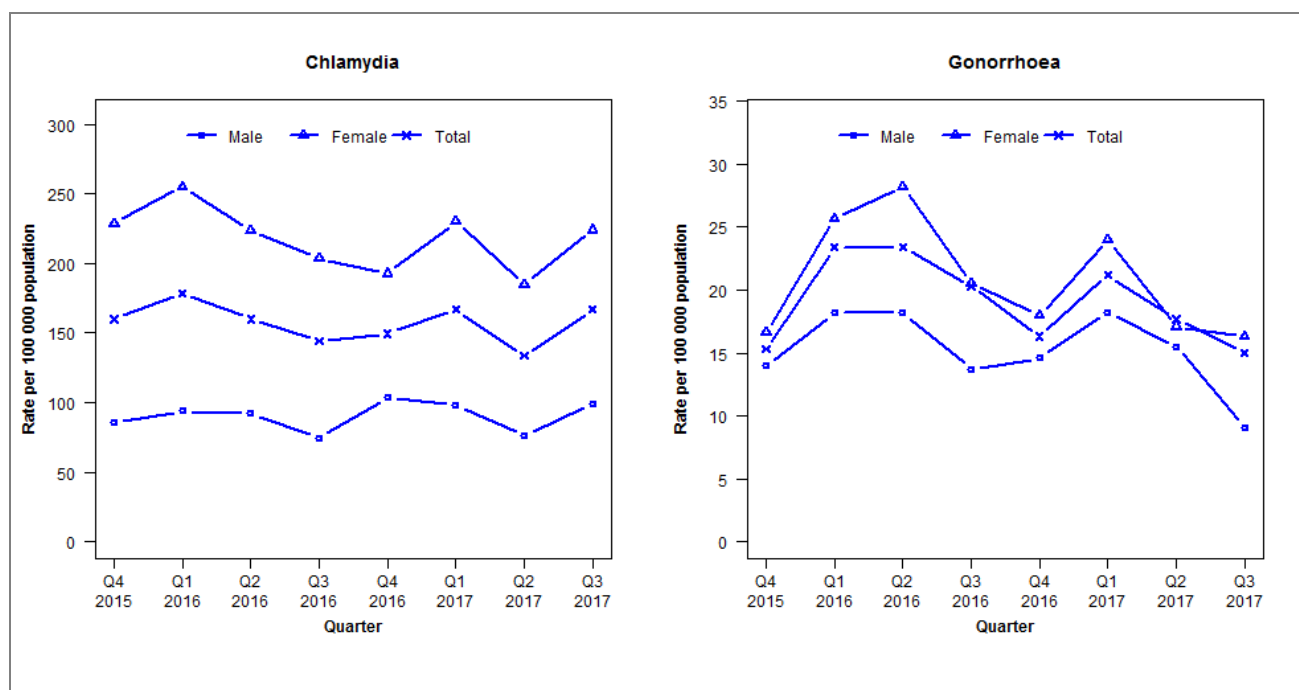
	Q4 2015	Q1 2016	Q2 2016	Q3 2016	Q4 2016	Q1 2017	Q2 2017	Q3 2017
<b>Number of lab-confirmed cases<sup>1</sup></b>	43	27	40	36	25	35	24	35
<i>Female</i>	25	19	24	24	10	16	11	19
<i>Male</i>	18	8	16	12	15	19	13	16
<b>Tests per 100 000 population<sup>2</sup></b>	2837	3036	2984	2858	2494	2836	2642	2642

<sup>1</sup>Total includes cases where sex is not reported

<sup>2</sup>Denominator = Statistics New Zealand mid-year population estimates

## Laboratory surveillance of chlamydia and gonorrhoea: July - September 2017

Quarterly chlamydia and gonorrhoea rates (male, female and total<sup>1</sup> population), October 2015 to September 2017



<sup>1</sup>Total includes cases where sex is not reported  
Denominator = Statistics New Zealand mid-year population estimates

Note: Data processing methods allow for exclusion of repeat tests.

### Number of lab confirmed chlamydia cases (male, female and total population) and number of tests per 100 000 population, October 2015 to September 2017

	Q4 2015	Q1 2016	Q2 2016	Q3 2016	Q4 2016	Q1 2017	Q2 2017	Q3 2017
<b>Number of lab-confirmed cases<sup>1</sup></b>	354	405	362	327	339	378	303	378
<i>Female</i>	261	298	261	238	225	269	216	262
<i>Male</i>	92	103	101	82	114	108	84	109
<b>Tests per 100 000 population<sup>2</sup></b>	2245	2155	2110	2121	1966	2191	2033	2128

<sup>1</sup>Total includes cases where sex is not reported

<sup>2</sup>Denominator = Statistics New Zealand mid-year population estimates

### Number of lab confirmed gonorrhoea cases (female, male and total population) and number of tests per 100 000 population, October 2015 to September 2017

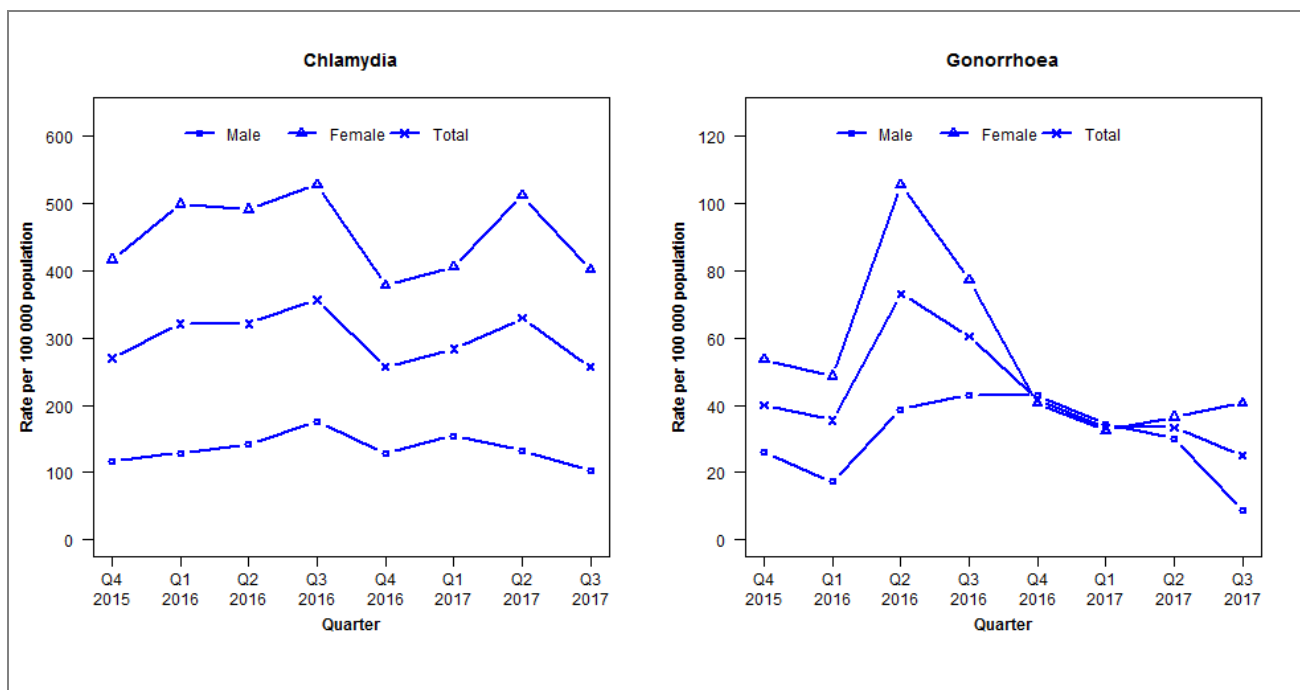
	Q4 2015	Q1 2016	Q2 2016	Q3 2016	Q4 2016	Q1 2017	Q2 2017	Q3 2017
<b>Number of lab-confirmed cases<sup>1</sup></b>	34	53	53	46	37	48	40	34
<i>Female</i>	19	30	33	24	21	28	20	19
<i>Male</i>	15	20	20	15	16	20	17	10
<b>Tests per 100 000 population<sup>2</sup></b>	2101	2157	2111	2121	1969	2192	2035	2132

<sup>1</sup>Total includes cases where sex is not reported

<sup>2</sup>Denominator = Statistics New Zealand mid-year population estimates

## Laboratory surveillance of chlamydia and gonorrhoea: July - September 2017

Quarterly chlamydia and gonorrhoea rates (male, female and total<sup>1</sup> population), October 2015 to September 2017



<sup>1</sup>Total includes cases where sex is not reported  
Denominator = Statistics New Zealand mid-year population estimates

Note: Data processing methods allow for exclusion of repeat tests. Gonorrhoea rates for males are based on less than five cases in some quarters.

### Number of lab confirmed chlamydia cases (male, female and total population) and number of tests per 100 000 population, October 2015 to September 2017

	Q4 2015	Q1 2016	Q2 2016	Q3 2016	Q4 2016	Q1 2017	Q2 2017	Q3 2017
<b>Number of lab-confirmed cases<sup>1</sup></b>	128	154	154	171	123	136	158	123
<i>Female</i>	101	123	121	130	93	100	126	99
<i>Male</i>	27	30	33	41	30	36	31	24
<b>Tests per 100 000 population<sup>2</sup></b>	2384	2346	2340	2352	2254	2440	2523	2402

<sup>1</sup>Total includes cases where sex is not reported

<sup>2</sup>Denominator = Statistics New Zealand mid-year population estimates

### Number of lab confirmed gonorrhoea cases (female, male and total population) and number of tests per 100 000 population, October 2015 to September 2017

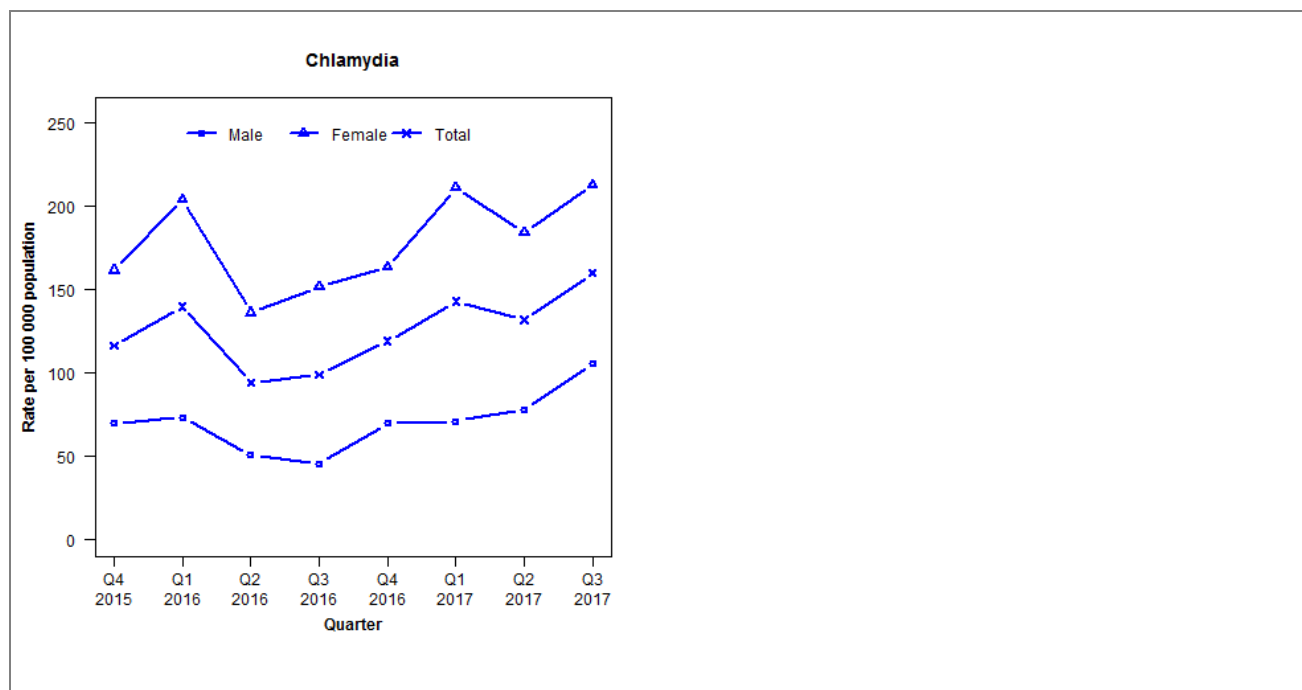
	Q4 2015	Q1 2016	Q2 2016	Q3 2016	Q4 2016	Q1 2017	Q2 2017	Q3 2017
<b>Number of lab-confirmed cases<sup>1</sup></b>	19	17	35	29	20	16	16	12
<i>Female</i>	13	12	26	19	10	8	9	10
<i>Male</i>	6	4	9	10	10	8	7	2
<b>Tests per 100 000 population<sup>2</sup></b>	2205	2388	2373	2365	2294	2473	2542	2427

<sup>1</sup>Total includes cases where sex is not reported

<sup>2</sup>Denominator = Statistics New Zealand mid-year population estimates

## Laboratory surveillance of chlamydia and gonorrhoea: July - September 2017

Quarterly chlamydia and gonorrhoea rates (male, female and total<sup>1</sup> population), October 2015 to September 2017



<sup>1</sup>Total includes cases where sex is not reported

Denominator = Statistics New Zealand mid-year population estimates

Note: Data processing methods allow for exclusion of repeat tests. Gonorrhoea rates are not presented as there are fewer than five cases in many quarters. From 19 January 2017 all gonorrhoea specimens are tested by NAAT.

### Number of lab confirmed chlamydia cases (male, female and total population) and number of tests per 100 000 population, October 2015 to September 2017

	Q4 2015	Q1 2016	Q2 2016	Q3 2016	Q4 2016	Q1 2017	Q2 2017	Q3 2017
<b>Number of lab-confirmed cases<sup>1</sup></b>	135	162	109	115	138	167	154	187
<i>Female</i>	95	120	80	89	96	125	109	126
<i>Male</i>	40	42	29	26	40	41	45	61
<b>Tests per 100 000 population<sup>2</sup></b>	1921	2033	1984	1829	1850	2062	1995	2148

<sup>1</sup>Total includes cases where sex is not reported

<sup>2</sup>Denominator = Statistics New Zealand mid-year population estimates

### Number of lab confirmed gonorrhoea cases (female, male and total population) and number of tests per 100 000 population, October 2015 to September 2017

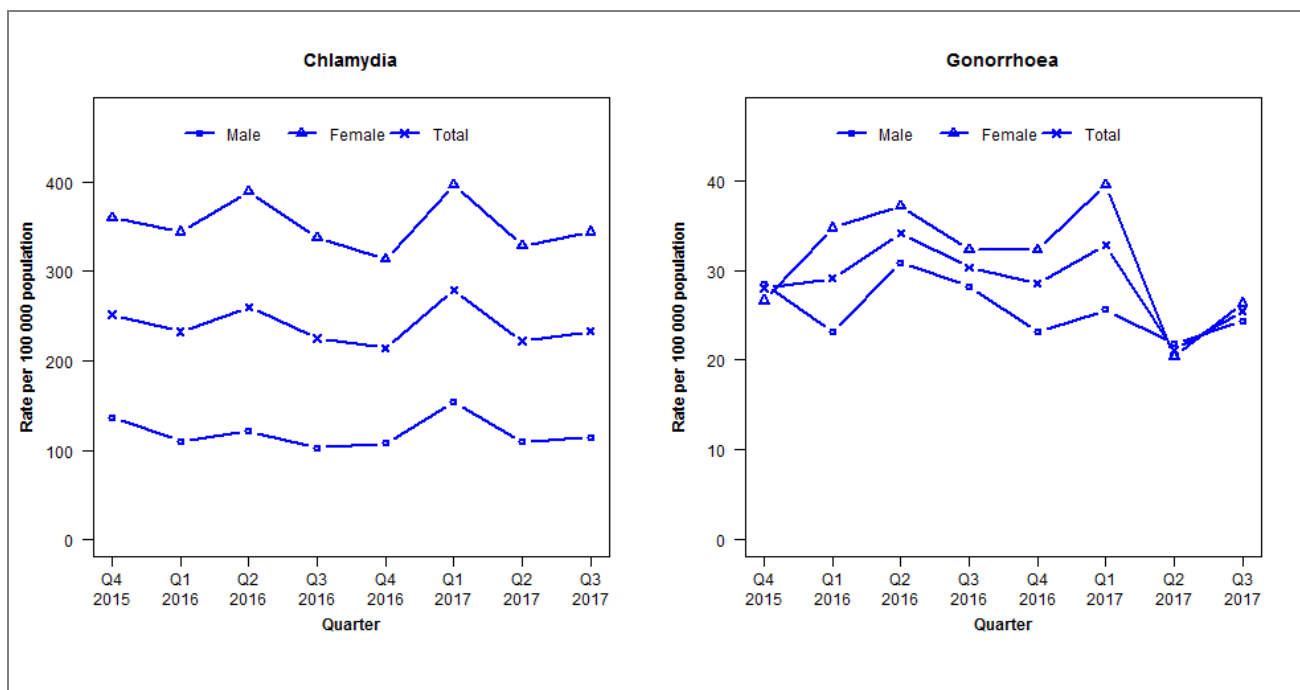
	Q4 2015	Q1 2016	Q2 2016	Q3 2016	Q4 2016	Q1 2017	Q2 2017	Q3 2017
<b>Number of lab-confirmed cases<sup>1</sup></b>	1	6	1	5	10	9	6	4
<i>Female</i>	0	1	0	1	2	0	2	1
<i>Male</i>	1	5	1	4	8	9	4	3
<b>Tests per 100 000 population<sup>2</sup></b>	2244	2516	2538	2412	2365	2584	2473	2676

<sup>1</sup>Total includes cases where sex is not reported

<sup>2</sup>Denominator = Statistics New Zealand mid-year population estimates

## Laboratory surveillance of chlamydia and gonorrhoea: July - September 2017

Quarterly chlamydia and gonorrhoea rates (male, female and total<sup>1</sup> population), October 2015 to September 2017



<sup>1</sup>Total includes cases where sex is not reported  
Denominator = Statistics New Zealand mid-year population estimates

Note: Data processing methods allow for exclusion of repeat tests.

### Number of lab confirmed chlamydia cases (male, female and total population) and number of tests per 100 000 population, October 2015 to September 2017

	Q4 2015	Q1 2016	Q2 2016	Q3 2016	Q4 2016	Q1 2017	Q2 2017	Q3 2017
<b>Number of lab-confirmed cases<sup>1</sup></b>	404	375	420	363	346	451	359	376
<i>Female</i>	298	287	325	282	262	331	274	287
<i>Male</i>	105	86	95	80	84	120	85	89
<b>Tests per 100 000 population<sup>2</sup></b>	2288	2081	2154	2009	1900	2132	2000	2106

<sup>1</sup>Total includes cases where sex is not reported

<sup>2</sup>Denominator = Statistics New Zealand mid-year population estimates

### Number of lab confirmed gonorrhoea cases (female, male and total population) and number of tests per 100 000 population, October 2015 to September 2017

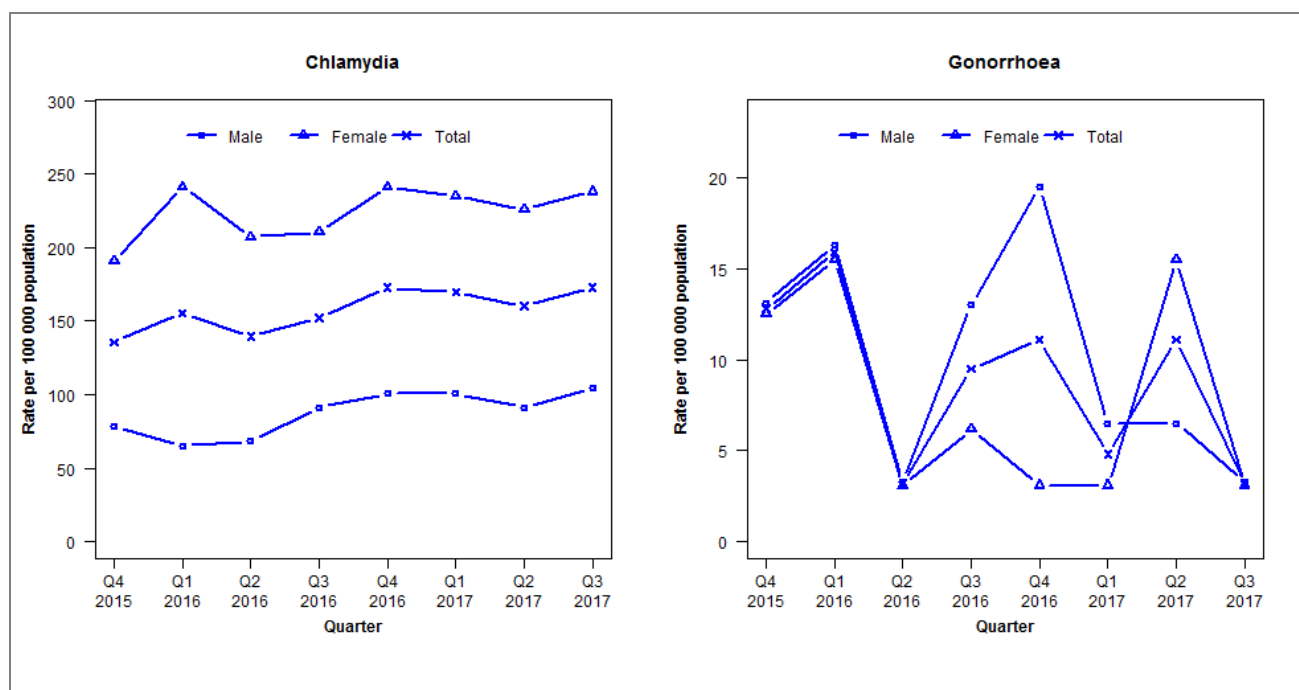
	Q4 2015	Q1 2016	Q2 2016	Q3 2016	Q4 2016	Q1 2017	Q2 2017	Q3 2017
<b>Number of lab-confirmed cases<sup>1</sup></b>	45	47	55	49	46	53	34	41
<i>Female</i>	22	29	31	27	27	33	17	22
<i>Male</i>	22	18	24	22	18	20	17	19
<b>Tests per 100 000 population<sup>2</sup></b>	2236	2230	2291	2139	2021	2260	2125	2243

<sup>1</sup>Total includes cases where sex is not reported

<sup>2</sup>Denominator = Statistics New Zealand mid-year population estimates

## Laboratory surveillance of chlamydia and gonorrhoea: July - September 2017

Quarterly chlamydia and gonorrhoea rates (male, female and total<sup>1</sup> population), October 2015 to September 2017



<sup>1</sup>Total includes cases where sex is not reported  
Denominator = Statistics New Zealand mid-year population estimates

Note: Data processing methods allow for exclusion of repeat tests. Gonorrhoea rates for males and females are based on less than five cases in some quarters.

### Number of lab confirmed chlamydia cases (male, female and total population) and number of tests per 100 000 population, October 2015 to September 2017

	Q4 2015	Q1 2016	Q2 2016	Q3 2016	Q4 2016	Q1 2017	Q2 2017	Q3 2017
<b>Number of lab-confirmed cases<sup>1</sup></b>	85	98	88	96	109	107	101	109
<i>Female</i>	61	78	67	68	78	76	73	77
<i>Male</i>	24	20	21	28	31	31	28	32
<b>Tests per 100 000 population<sup>2</sup></b>	1824	1902	1808	1853	1748	1834	1743	1848

<sup>1</sup>Total includes cases where sex is not reported

<sup>2</sup>Denominator = Statistics New Zealand mid-year population estimates

### Number of lab confirmed gonorrhoea cases (female, male and total population) and number of tests per 100 000 population, October 2015 to September 2017

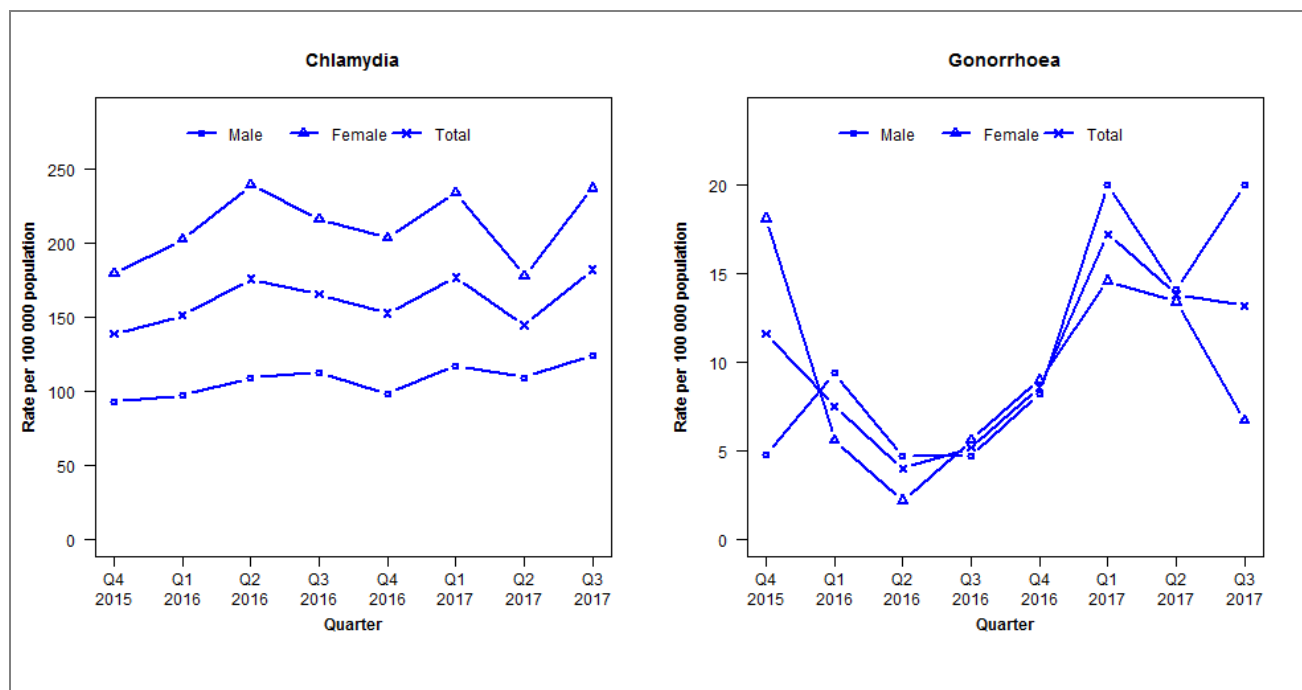
	Q4 2015	Q1 2016	Q2 2016	Q3 2016	Q4 2016	Q1 2017	Q2 2017	Q3 2017
<b>Number of lab-confirmed cases<sup>1</sup></b>	8	10	2	6	7	3	7	2
<i>Female</i>	4	5	1	2	1	1	5	1
<i>Male</i>	4	5	1	4	6	2	2	1
<b>Tests per 100 000 population<sup>2</sup></b>	1740	1940	1834	2303	2156	2243	2217	2306

<sup>1</sup>Total includes cases where sex is not reported

<sup>2</sup>Denominator = Statistics New Zealand mid-year population estimates

## Laboratory surveillance of chlamydia and gonorrhoea: July - September 2017

Quarterly chlamydia and gonorrhoea rates (male, female and total<sup>1</sup> population), October 2015 to September 2017



<sup>1</sup>Total includes cases where sex is not reported

Denominator = Statistics New Zealand mid-year population estimates

Note: Data processing procedures allow for exclusion of repeat tests. Gonorrhoea rates for males and females are based on less than five cases in some quarters.

### Number of lab confirmed chlamydia cases (male, female and total population) and number of tests per 100 000 population, October 2015 to September 2017

	Q4 2015	Q1 2016	Q2 2016	Q3 2016	Q4 2016	Q1 2017	Q2 2017	Q3 2017
<b>Number of lab-confirmed cases<sup>1</sup></b>	239	264	307	289	267	309	253	318
<i>Female</i>	159	181	214	193	182	209	159	212
<i>Male</i>	78	83	93	96	84	100	93	106
<b>Tests per 100 000 population<sup>2</sup></b>	1975	1930	1878	1837	1841	2017	1927	1971

<sup>1</sup>Total includes cases where sex is not reported

<sup>2</sup>Denominator = Statistics New Zealand mid-year population estimates

### Number of lab confirmed gonorrhoea cases (female, male and total population) and number of tests per 100 000 population, October 2015 to September 2017

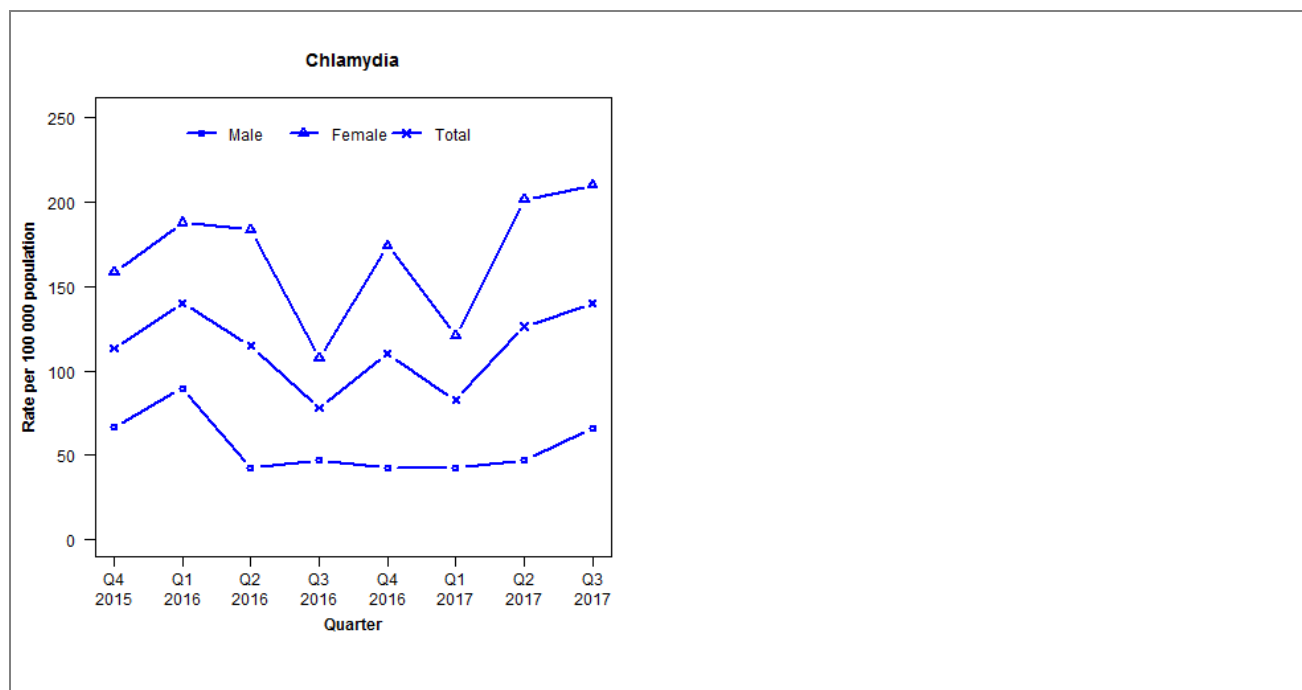
	Q4 2015	Q1 2016	Q2 2016	Q3 2016	Q4 2016	Q1 2017	Q2 2017	Q3 2017
<b>Number of lab-confirmed cases<sup>1</sup></b>	20	13	7	9	15	30	24	23
<i>Female</i>	16	5	2	5	8	13	12	6
<i>Male</i>	4	8	4	4	7	17	12	17
<b>Tests per 100 000 population<sup>2</sup></b>	1875	1999	1909	1865	1871	2047	1954	1997

<sup>1</sup>Total includes cases where sex is not reported

<sup>2</sup>Denominator = Statistics New Zealand mid-year population estimates

## Laboratory surveillance of chlamydia and gonorrhoea: July - September 2017

Quarterly chlamydia and gonorrhoea rates (male, female and total<sup>1</sup> population), October 2015 to September 2017



<sup>1</sup>Total includes cases where sex is not reported

Denominator = Statistics New Zealand mid-year population estimates

Note: Data processing methods allow for exclusion of repeat tests. Gonorrhoea rates are not presented as there are fewer than five cases in many quarters.

### Number of lab confirmed chlamydia cases (male, female and total population) and number of tests per 100 000 population, October 2015 to September 2017

	Q4 2015	Q1 2016	Q2 2016	Q3 2016	Q4 2016	Q1 2017	Q2 2017	Q3 2017
<b>Number of lab-confirmed cases<sup>1</sup></b>	49	61	50	34	48	36	55	61
<i>Female</i>	35	42	41	24	39	27	45	47
<i>Male</i>	14	19	9	10	9	9	10	14
<b>Tests per 100 000 population<sup>2</sup></b>	1644	1618	1494	1351	1455	1193	1340	1579

<sup>1</sup>Total includes cases where sex is not reported

<sup>2</sup>Denominator = Statistics New Zealand mid-year population estimates

### Number of lab confirmed gonorrhoea cases (female, male and total population) and number of tests per 100 000 population, October 2015 to September 2017

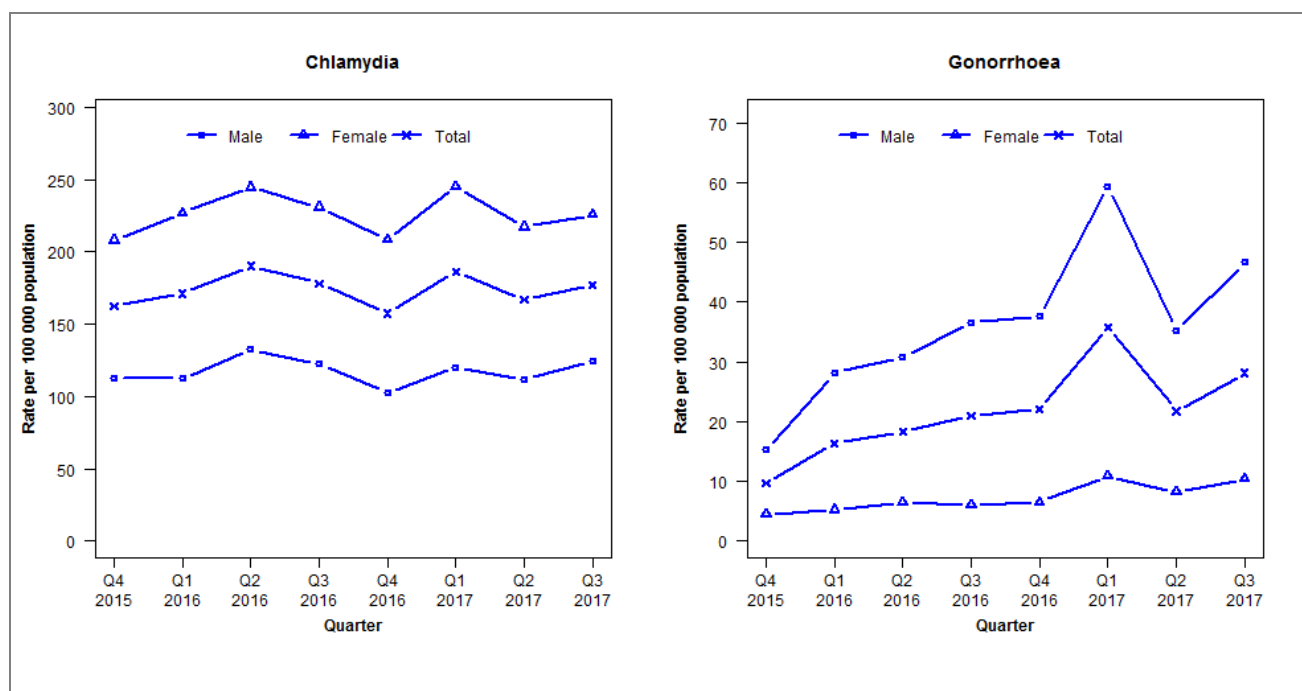
	Q4 2015	Q1 2016	Q2 2016	Q3 2016	Q4 2016	Q1 2017	Q2 2017	Q3 2017
<b>Number of lab-confirmed cases<sup>1</sup></b>	0	0	0	0	2	2	1	4
<i>Female</i>	0	0	0	0	1	1	0	3
<i>Male</i>	0	0	0	0	1	1	1	1
<b>Tests per 100 000 population<sup>2</sup></b>	1546	1686	1606	1436	1549	1227	1395	1629

<sup>1</sup>Total includes cases where sex is not reported

<sup>2</sup>Denominator = Statistics New Zealand mid-year population estimates

## Laboratory surveillance of chlamydia and gonorrhoea: July - September 2017

Quarterly chlamydia and gonorrhoea rates (male, female and total<sup>1</sup> population), October 2015 to September 2017



<sup>1</sup>Total includes cases where sex is not reported

Denominator = Statistics New Zealand mid-year population estimates

Note: Data processing methods allow for exclusion of repeat tests. From Q1 2016 all data for the Wellington region is now being received (previously excluded a small Wellington Hospital laboratory).

**Number of lab confirmed chlamydia cases (male, female and total population) and number of tests per 100 000 population, October 2015 to September 2017**

	Q4 2015	Q1 2016	Q2 2016	Q3 2016	Q4 2016	Q1 2017	Q2 2017	Q3 2017
<b>Number of lab-confirmed cases<sup>1</sup></b>	723	774	862	807	713	842	755	802
<i>Female</i>	475	526	567	535	483	568	503	523
<i>Male</i>	244	248	293	271	226	266	246	276
<b>Tests per 100 000 population<sup>2</sup></b>	2657	2796	2822	2626	2413	2807	2656	2850

<sup>1</sup>Total includes cases where sex is not reported

<sup>2</sup>Denominator = Statistics New Zealand mid-year population estimates

**Number of lab confirmed gonorrhoea cases (female, male and total population) and number of tests per 100 000 population, October 2015 to September 2017**

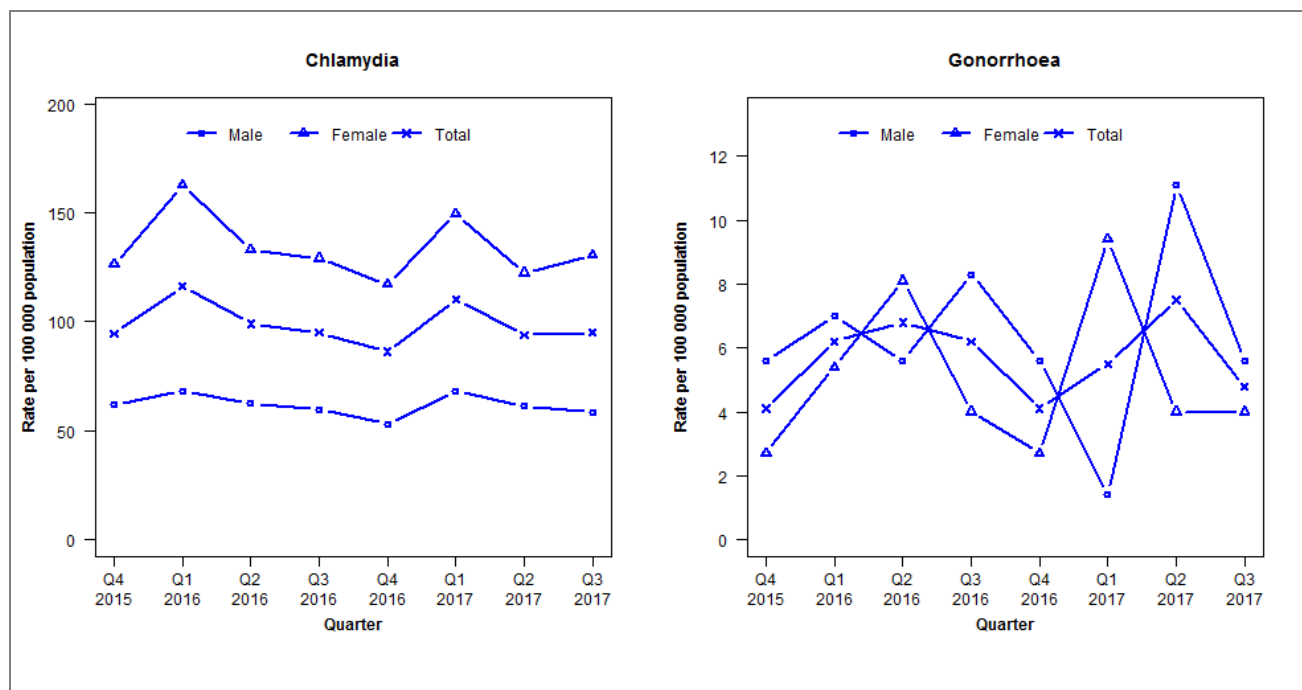
	Q4 2015	Q1 2016	Q2 2016	Q3 2016	Q4 2016	Q1 2017	Q2 2017	Q3 2017
<b>Number of lab-confirmed cases<sup>1</sup></b>	43	74	83	95	100	162	98	127
<i>Female</i>	10	12	15	14	15	25	19	24
<i>Male</i>	33	62	68	81	83	131	78	103
<b>Tests per 100 000 population<sup>2</sup></b>	2493	2834	2839	2627	2417	2828	2672	2872

<sup>1</sup>Total includes cases where sex is not reported

<sup>2</sup>Denominator = Statistics New Zealand mid-year population estimates

## Laboratory surveillance of chlamydia and gonorrhoea: July - September 2017

Quarterly chlamydia and gonorrhoea rates (male, female and total<sup>1</sup> population), October 2015 to September 2017



<sup>1</sup>Total includes cases where sex is not reported  
Denominator = Statistics New Zealand mid-year population estimates

Note: Data processing procedures allow for exclusion of repeat tests. Gonorrhoea rates for males and females are based on less than five cases in some quarters.

### Number of lab confirmed chlamydia cases (male, female and total population) and number of tests per 100 000 population, October 2015 to September 2017

	Q4 2015	Q1 2016	Q2 2016	Q3 2016	Q4 2016	Q1 2017	Q2 2017	Q3 2017
<b>Number of lab-confirmed cases<sup>1</sup></b>	137	170	145	139	126	161	137	139
<i>Female</i>	93	121	99	96	87	111	91	97
<i>Male</i>	44	49	45	43	38	49	44	42
<b>Tests per 100 000 population<sup>2</sup></b>	1682	1756	1555	1484	1432	1624	1530	1597

<sup>1</sup>Total includes cases where sex is not reported

<sup>2</sup>Denominator = Statistics New Zealand mid-year population estimates

### Number of lab confirmed gonorrhoea cases (female, male and total population) and number of tests per 100 000 population, October 2015 to September 2017

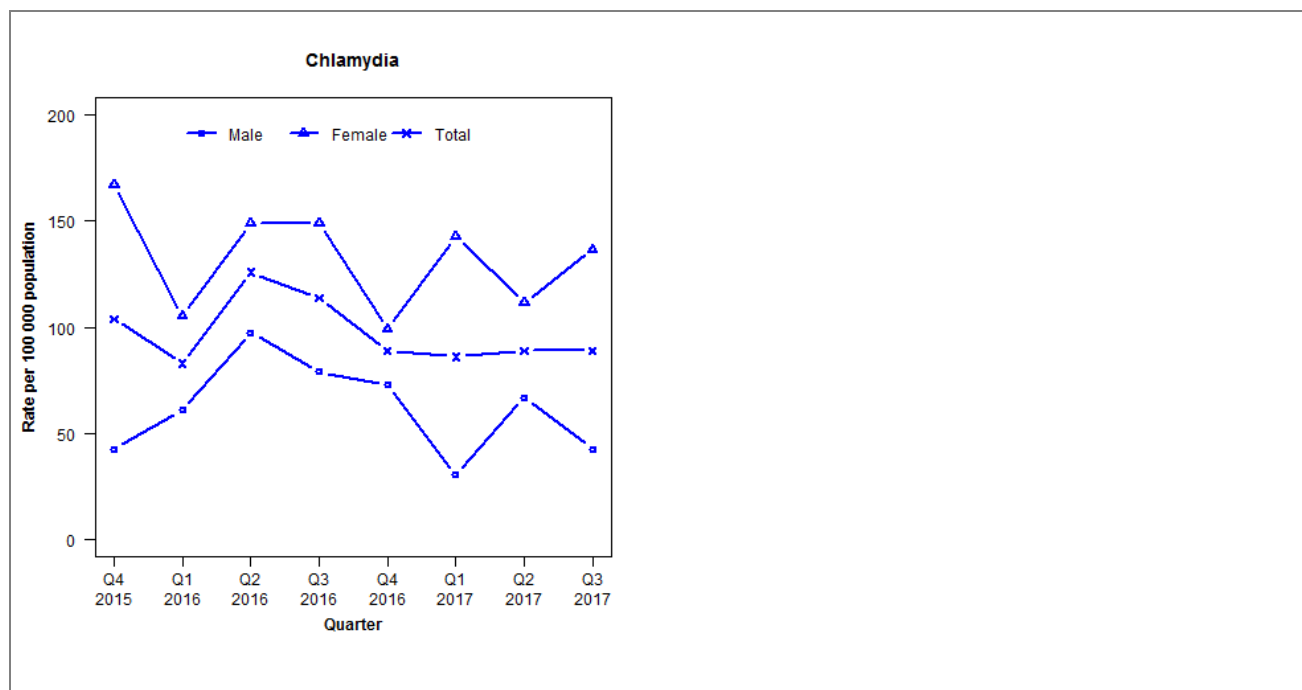
	Q4 2015	Q1 2016	Q2 2016	Q3 2016	Q4 2016	Q1 2017	Q2 2017	Q3 2017
<b>Number of lab-confirmed cases<sup>1</sup></b>	6	9	10	9	6	8	11	7
<i>Female</i>	2	4	6	3	2	7	3	3
<i>Male</i>	4	5	4	6	4	1	8	4
<b>Tests per 100 000 population<sup>2</sup></b>	1590	1763	1558	1486	1437	1631	1532	1599

<sup>1</sup>Total includes cases where sex is not reported

<sup>2</sup>Denominator = Statistics New Zealand mid-year population estimates

## Laboratory surveillance of chlamydia and gonorrhoea: July - September 2017

Quarterly chlamydia and gonorrhoea rates (male, female and total<sup>1</sup> population), October 2015 to September 2017



<sup>1</sup>Total includes cases where sex is not reported

Denominator = Statistics New Zealand mid-year population estimates

Note: Data processing methods allow for exclusion of repeat tests. Gonorrhoea rates are not presented as there are fewer than five cases in many quarters.

### Number of lab confirmed chlamydia cases (male, female and total population) and number of tests per 100 000 population, October 2015 to September 2017

	Q4 2015	Q1 2016	Q2 2016	Q3 2016	Q4 2016	Q1 2017	Q2 2017	Q3 2017
<b>Number of lab-confirmed cases<sup>1</sup></b>	34	27	41	37	29	28	29	29
<i>Female</i>	27	17	24	24	16	23	18	22
<i>Male</i>	7	10	16	13	12	5	11	7
<b>Tests per 100 000 population<sup>2</sup></b>	1768	1620	1755	1564	1481	1506	1451	1595

<sup>1</sup>Total includes cases where sex is not reported

<sup>2</sup>Denominator = Statistics New Zealand mid-year population estimates

### Number of lab confirmed gonorrhoea cases (female, male and total population) and number of tests per 100 000 population, October 2015 to September 2017

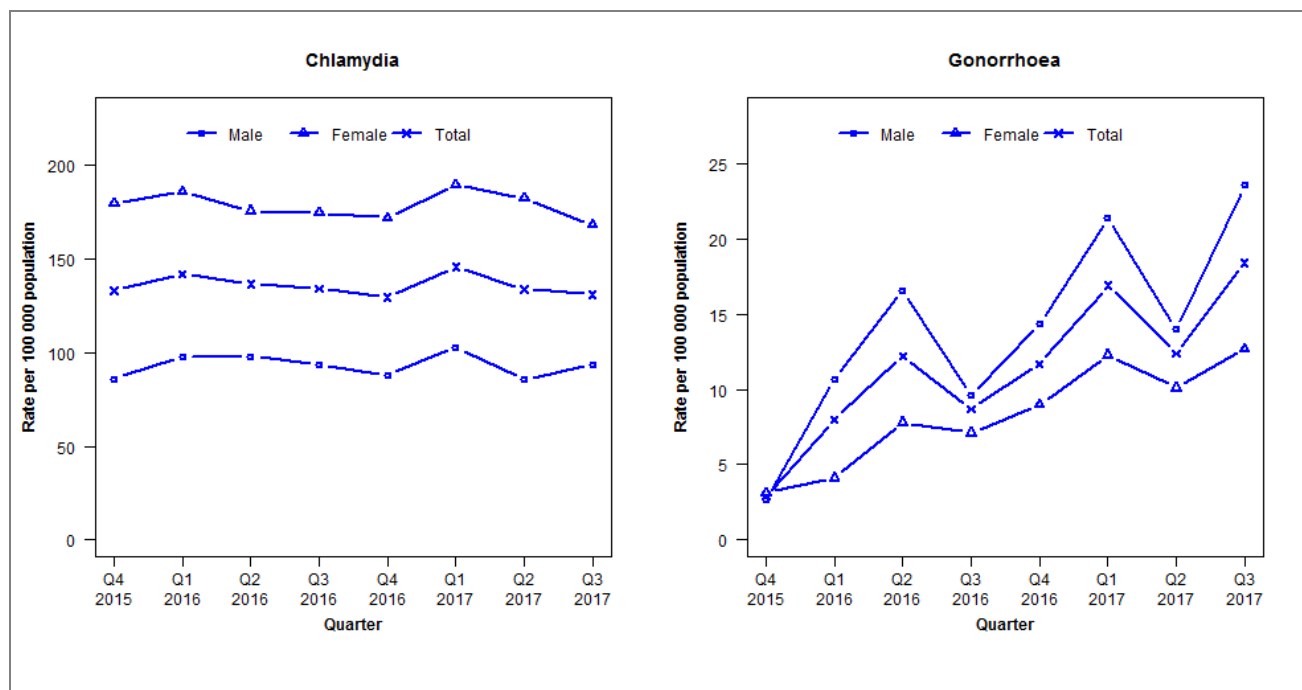
	Q4 2015	Q1 2016	Q2 2016	Q3 2016	Q4 2016	Q1 2017	Q2 2017	Q3 2017
<b>Number of lab-confirmed cases<sup>1</sup></b>	0	1	2	1	2	0	1	1
<i>Female</i>	0	0	1	1	1	0	1	0
<i>Male</i>	0	1	1	0	1	0	0	1
<b>Tests per 100 000 population<sup>2</sup></b>	1667	1620	1755	1564	1481	1506	1451	1595

<sup>1</sup>Total includes cases where sex is not reported

<sup>2</sup>Denominator = Statistics New Zealand mid-year population estimates

## Laboratory surveillance of chlamydia and gonorrhoea: July - September 2017

Quarterly chlamydia and gonorrhoea rates (male, female and total<sup>1</sup> population), October 2015 to September 2017



<sup>1</sup>Total includes cases where sex is not reported  
Denominator = Statistics New Zealand mid-year population estimates

Note: Data processing methods allow for exclusion of repeat tests.

### Number of lab confirmed chlamydia cases (male, female and total population) and number of tests per 100 000 population, October 2015 to September 2017

	Q4 2015	Q1 2016	Q2 2016	Q3 2016	Q4 2016	Q1 2017	Q2 2017	Q3 2017
<b>Number of lab-confirmed cases<sup>1</sup></b>	700	766	737	724	699	787	722	706
<i>Female</i>	471	498	471	468	461	508	489	451
<i>Male</i>	227	266	266	254	238	279	232	254
<b>Tests per 100 000 population<sup>2</sup></b>	2304	2334	2305	2298	2132	2441	2322	2317

<sup>1</sup>Total includes cases where sex is not reported

<sup>2</sup>Denominator = Statistics New Zealand mid-year population estimates

### Number of lab confirmed gonorrhoea cases (female, male and total population) and number of tests per 100 000 population, October 2015 to September 2017

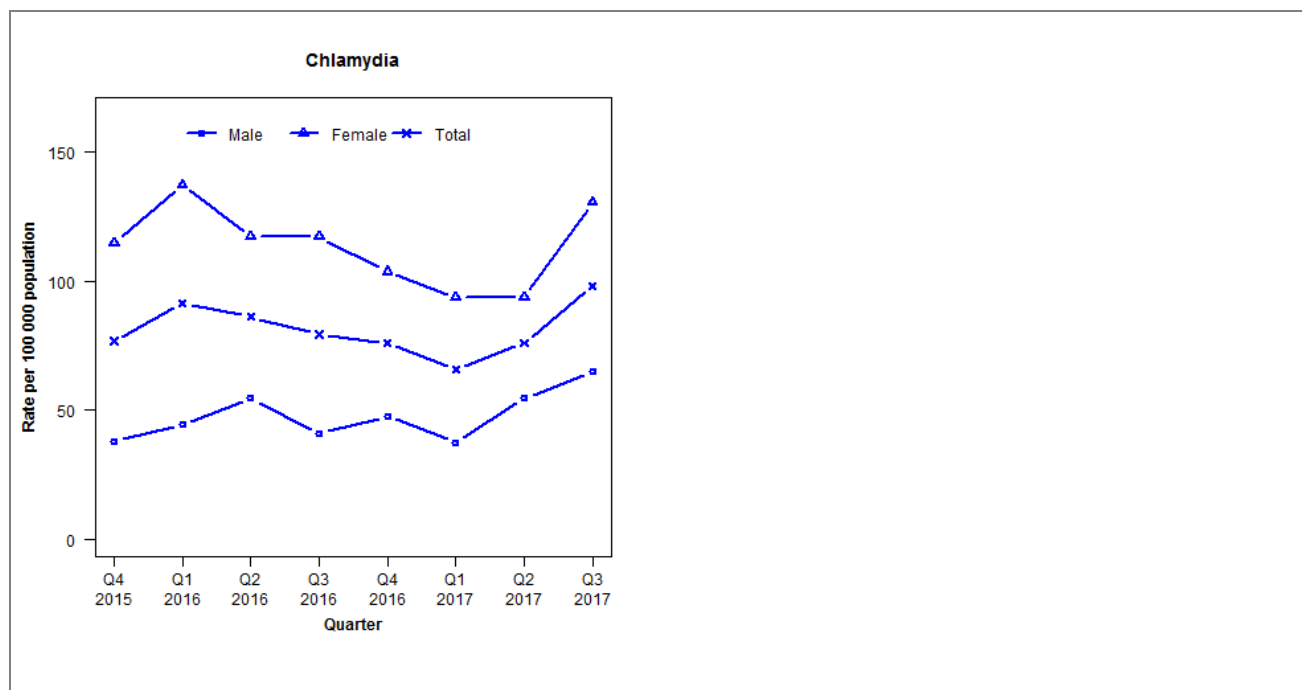
	Q4 2015	Q1 2016	Q2 2016	Q3 2016	Q4 2016	Q1 2017	Q2 2017	Q3 2017
<b>Number of lab-confirmed cases<sup>1</sup></b>	15	43	66	47	63	91	67	99
<i>Female</i>	8	11	21	19	24	33	27	34
<i>Male</i>	7	29	45	26	39	58	38	64
<b>Tests per 100 000 population<sup>2</sup></b>	2772	2958	2905	2907	2658	3023	2887	2902

<sup>1</sup>Total includes cases where sex is not reported

<sup>2</sup>Denominator = Statistics New Zealand mid-year population estimates

## Laboratory surveillance of chlamydia and gonorrhoea: July - September 2017

Quarterly chlamydia and gonorrhoea rates (male, female and total<sup>1</sup> population), October 2015 to September 2017



<sup>1</sup>Total includes cases where sex is not reported

Denominator = Statistics New Zealand mid-year population estimates

Note: Data processing methods introduced allow for exclusion of repeat tests. Gonorrhoea rates are not presented as there are fewer than five cases in many quarters.

### Number of lab confirmed chlamydia cases (male, female and total population) and number of tests per 100 000 population, October 2015 to September 2017

	Q4 2015	Q1 2016	Q2 2016	Q3 2016	Q4 2016	Q1 2017	Q2 2017	Q3 2017
<b>Number of lab-confirmed cases<sup>1</sup></b>	45	54	51	47	45	39	45	58
<i>Female</i>	34	41	35	35	31	28	28	39
<i>Male</i>	11	13	16	12	14	11	16	19
<b>Tests per 100 000 population<sup>2</sup></b>	1466	1570	1511	1450	1285	1423	1227	1393

<sup>1</sup>Total includes cases where sex is not reported

<sup>2</sup>Denominator = Statistics New Zealand mid-year population estimates

### Number of lab confirmed gonorrhoea cases (female, male and total population) and number of tests per 100 000 population, October 2015 to September 2017

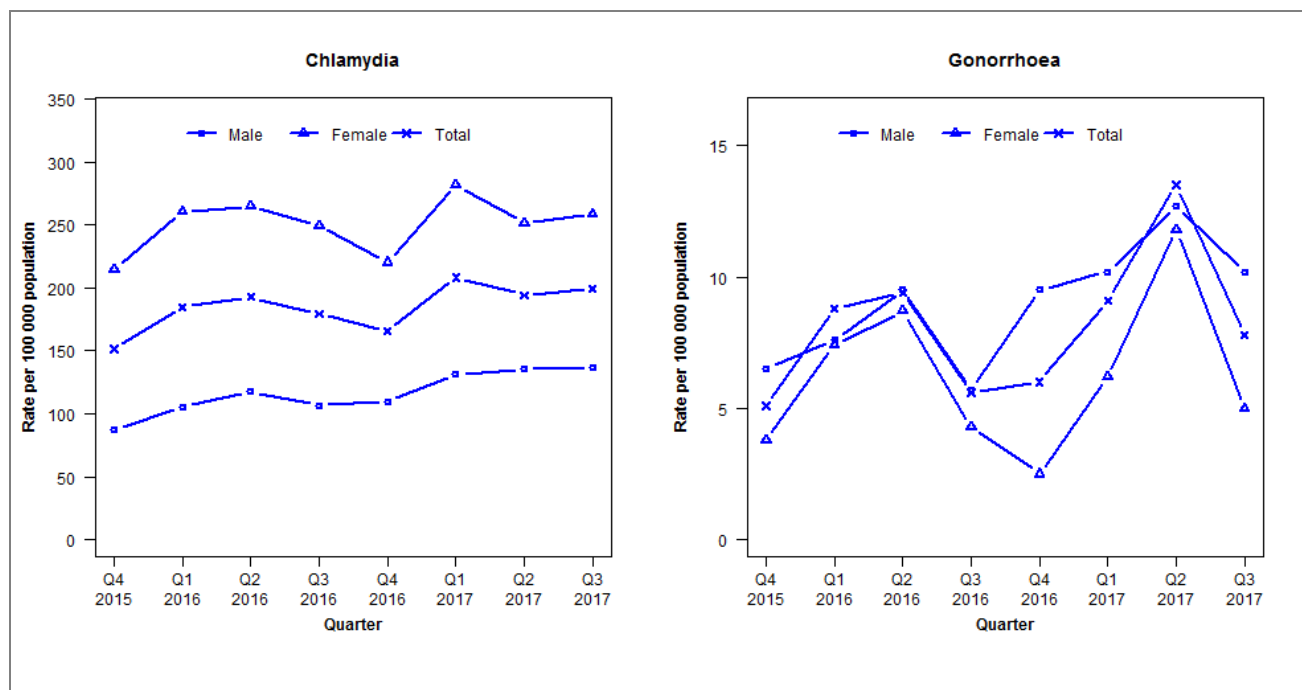
	Q4 2015	Q1 2016	Q2 2016	Q3 2016	Q4 2016	Q1 2017	Q2 2017	Q3 2017
<b>Number of lab-confirmed cases<sup>1</sup></b>	3	10	6	1	6	1	2	1
<i>Female</i>	1	5	3	0	2	1	1	1
<i>Male</i>	2	3	3	1	4	0	0	0
<b>Tests per 100 000 population<sup>2</sup></b>	1756	1961	1917	1849	1607	1829	1601	1766

<sup>1</sup>Total includes cases where sex is not reported

<sup>2</sup>Denominator = Statistics New Zealand mid-year population estimates

## Laboratory surveillance of chlamydia and gonorrhoea: July - September 2017

Quarterly chlamydia and gonorrhoea rates (male, female and total<sup>1</sup> population), October 2015 to September 2017



<sup>1</sup>Total includes cases where sex is not reported  
Denominator = Statistics New Zealand mid-year population estimates

Note: Data processing methods allow for exclusion of repeat tests. Gonorrhoea rates for females are based on less than five cases in some quarters.

### Number of lab confirmed chlamydia cases (male, female and total population) and number of tests per 100 000 population, October 2015 to September 2017

	Q4 2015	Q1 2016	Q2 2016	Q3 2016	Q4 2016	Q1 2017	Q2 2017	Q3 2017
<b>Number of lab-confirmed cases<sup>1</sup></b>	476	589	614	571	528	664	619	634
<i>Female</i>	341	420	427	402	355	454	405	417
<i>Male</i>	135	166	185	168	173	207	213	215
<b>Tests per 100 000 population<sup>2</sup></b>	2392	2380	2578	2487	2197	2429	2472	2560

<sup>1</sup>Total includes cases where sex is not reported

<sup>2</sup>Denominator = Statistics New Zealand mid-year population estimates

### Number of lab confirmed gonorrhoea cases (female, male and total population) and number of tests per 100 000 population, October 2015 to September 2017

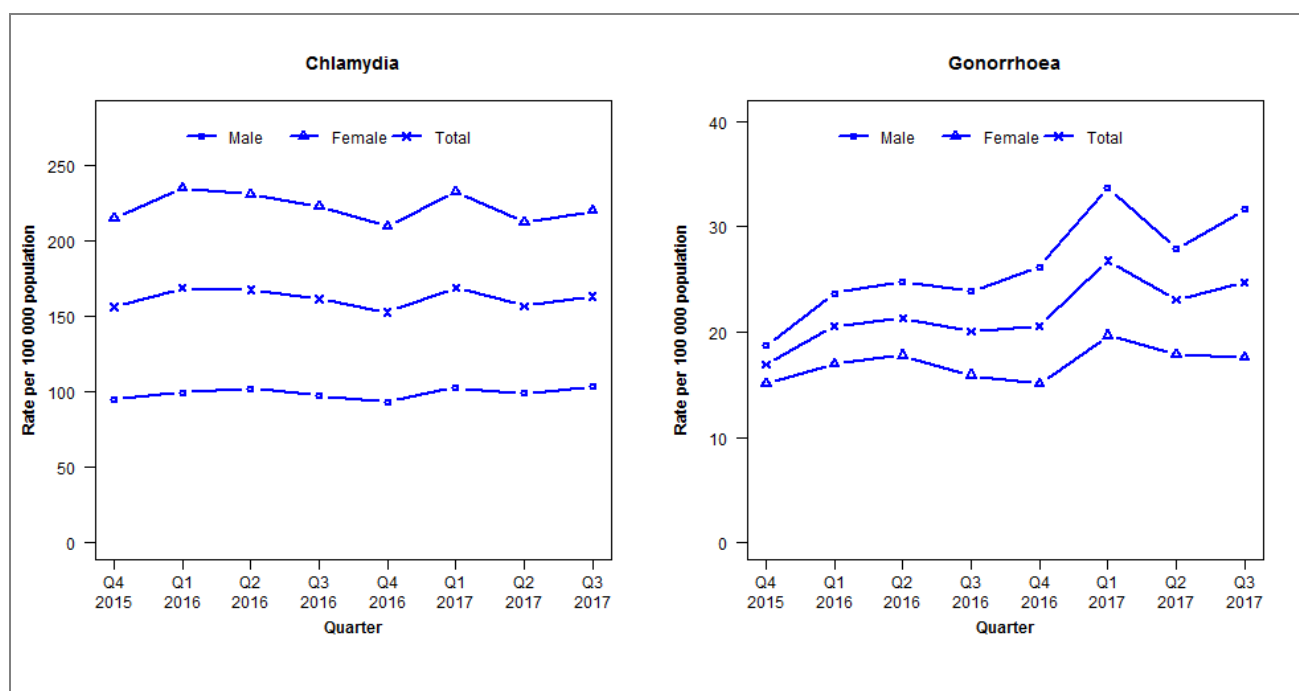
	Q4 2015	Q1 2016	Q2 2016	Q3 2016	Q4 2016	Q1 2017	Q2 2017	Q3 2017
<b>Number of lab-confirmed cases<sup>1</sup></b>	16	28	30	18	19	29	43	25
<i>Female</i>	6	12	14	7	4	10	19	8
<i>Male</i>	10	12	15	9	15	16	20	16
<b>Tests per 100 000 population<sup>2</sup></b>	2258	2401	2595	2504	2213	2446	2486	2574

<sup>1</sup>Total includes cases where sex is not reported

<sup>2</sup>Denominator = Statistics New Zealand mid-year population estimates

## Laboratory surveillance of chlamydia and gonorrhoea: July - September 2017

Quarterly chlamydia and gonorrhoea rates (male, female and total<sup>1</sup> population), October 2015 to September 2017



<sup>1</sup>Total includes cases where sex is not reported

Denominator = Statistics New Zealand mid-year population estimates

Note: Data processing methods allow for exclusion of repeat tests. NAAT (nucleic acid amplification testing) for gonorrhoea has been introduced in the majority of laboratories since 2012. Refer to DHB level reports for further details. Data was not received from Waikato hospital for Q1, Q2 and Q3 2017.

### Number of lab confirmed chlamydia cases (male, female and total population) and number of tests per 100 000 population, October 2015 to September 2017

	Q4 2015	Q1 2016	Q2 2016	Q3 2016	Q4 2016	Q1 2017	Q2 2017	Q3 2017
<b>Number of lab-confirmed cases<sup>1</sup></b>	7195	7925	7872	7580	7175	7935	7370	7666
<b>Female</b>	5037	5609	5503	5316	5008	5544	5066	5247
<b>Male</b>	2148	2300	2362	2249	2154	2374	2288	2398
<b>Tests per 100 000 population<sup>2</sup></b>	2432	2416	2360	2275	2103	2279	2208	2289

<sup>1</sup>Total includes cases where sex is not reported

<sup>2</sup>Denominator = Statistics New Zealand mid-year population estimates

### Number of lab confirmed gonorrhoea cases (female, male and total population) and number of tests per 100 000 population, October 2015 to September 2017

	Q4 2015	Q1 2016	Q2 2016	Q3 2016	Q4 2016	Q1 2017	Q2 2017	Q3 2017
<b>Number of lab-confirmed cases<sup>1</sup></b>	777	964	998	942	967	1256	1083	1158
<b>Female</b>	353	405	424	379	359	469	426	419
<b>Male</b>	423	546	572	552	604	778	645	732
<b>Tests per 100 000 population<sup>2</sup></b>	2538	2678	2556	2455	2257	2455	2380	2473

<sup>1</sup>Total includes cases where sex is not reported

<sup>2</sup>Denominator = Statistics New Zealand mid-year population estimates