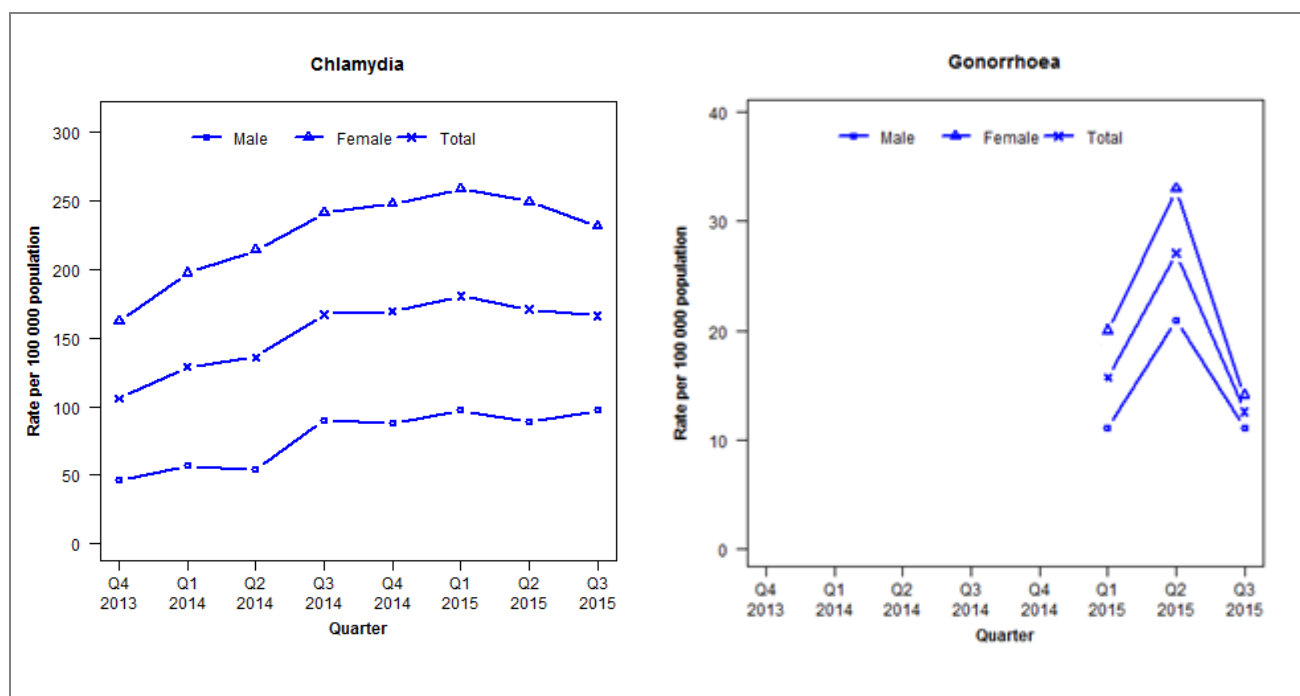


## Laboratory surveillance of chlamydia and gonorrhoea: July - September 2015

Quarterly chlamydia and gonorrhoea rates (female, male and total population), Oct 2013 to Sep 2015



Denominator = Statistics New Zealand mid-year population estimates

Note: Data processing methods allow for exclusion of repeat tests. Additional 2014 data received has been included may have impacted slightly on the counts produced. Gonorrhoea rates are not presented before Q1 2015 as data was incomplete.

### Number of lab confirmed chlamydia cases (female, male and total population) and number of tests per 100 000 population, October 2013 to September 2015

	Q4 2013	Q1 2014	Q2 2014	Q3 2014	Q4 2014	Q1 2015	Q2 2015	Q3 2015
<b>Number of lab-confirmed cases<sup>1</sup></b>	168	214	226	278	282	300	284	276
<i>Female</i>	131	168	182	205	211	220	212	197
<i>Male</i>	36	46	44	73	71	79	72	79
<b>Tests per 100 000 population<sup>2</sup></b>	1363	1387	1604	1724	1765	1892	1789	1970

<sup>1</sup>Total includes cases where sex is not reported

<sup>2</sup>Denominator = Statistics New Zealand mid-year population estimates

### Number of lab confirmed gonorrhoea cases (female, male and total population) and number of tests per 100 000 population, October 2013 to September 2015

	Q4 2013	Q1 2014	Q2 2014	Q3 2014	Q4 2014	Q1 2015	Q2 2015	Q3 2015
<b>Number of lab-confirmed cases<sup>1</sup></b>	*	*	*	*	*	26	45	21
<i>Female</i>	*	*	*	*	*	17	28	12
<i>Male</i>	*	*	*	*	*	9	17	9
<b>Tests per 100 000 population<sup>2</sup></b>	*	*	*	*	*	2644	2488	2730

<sup>1</sup>Total includes cases where sex is not reported

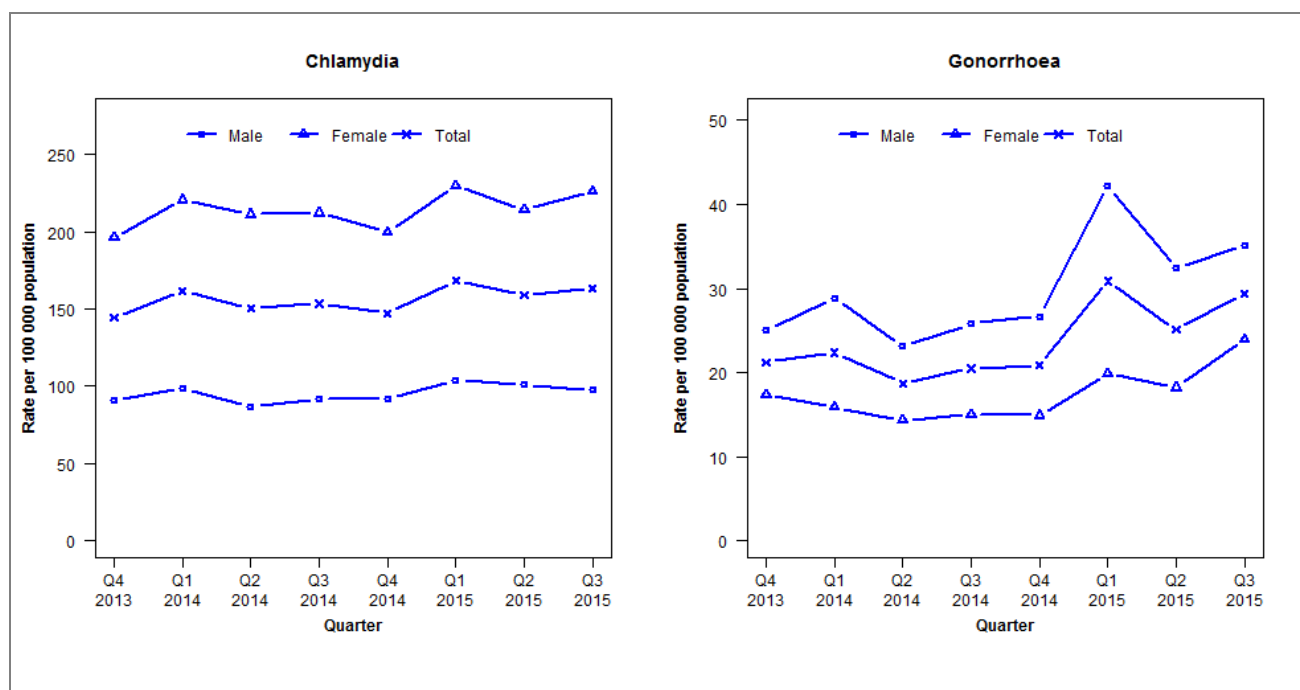
<sup>2</sup>Denominator = Statistics New Zealand mid-year population estimates

# AUCKLAND REGION

Auckland, Counties Manukau and Waitemata DHBs

## Laboratory surveillance of chlamydia and gonorrhoea: July - September 2015

Quarterly chlamydia and gonorrhoea rates (female, male and total population), Oct 2013 to Sep 2015



Denominator = Statistics New Zealand mid-year population estimates

Note: Data processing methods allow for exclusion of repeat tests. Data not received from Waitemata DHB for all quarters in 2013.

### Number of lab confirmed chlamydia cases (female, male and total population) and number of tests per 100 000 population, October 2013 to September 2015

	Q4 2013	Q1 2014	Q2 2014	Q3 2014	Q4 2014	Q1 2015	Q2 2015	Q3 2015
<b>Number of lab-confirmed cases<sup>1</sup></b>	2234	2492	2326	2369	2270	2598	2453	2524
<i>Female</i>	1539	1737	1665	1670	1575	1809	1688	1784
<i>Male</i>	693	748	655	692	694	786	763	739
<b>Tests per 100 000 population<sup>2</sup></b>	2366	2534	2554	2634	2550	2737	2721	2696

<sup>1</sup>Total includes cases where sex is not reported

<sup>2</sup>Denominator = Statistics New Zealand mid-year population estimates

### Number of lab confirmed gonorrhoea cases (female, male and total population) and number of tests per 100 000 population, October 2013 to September 2015

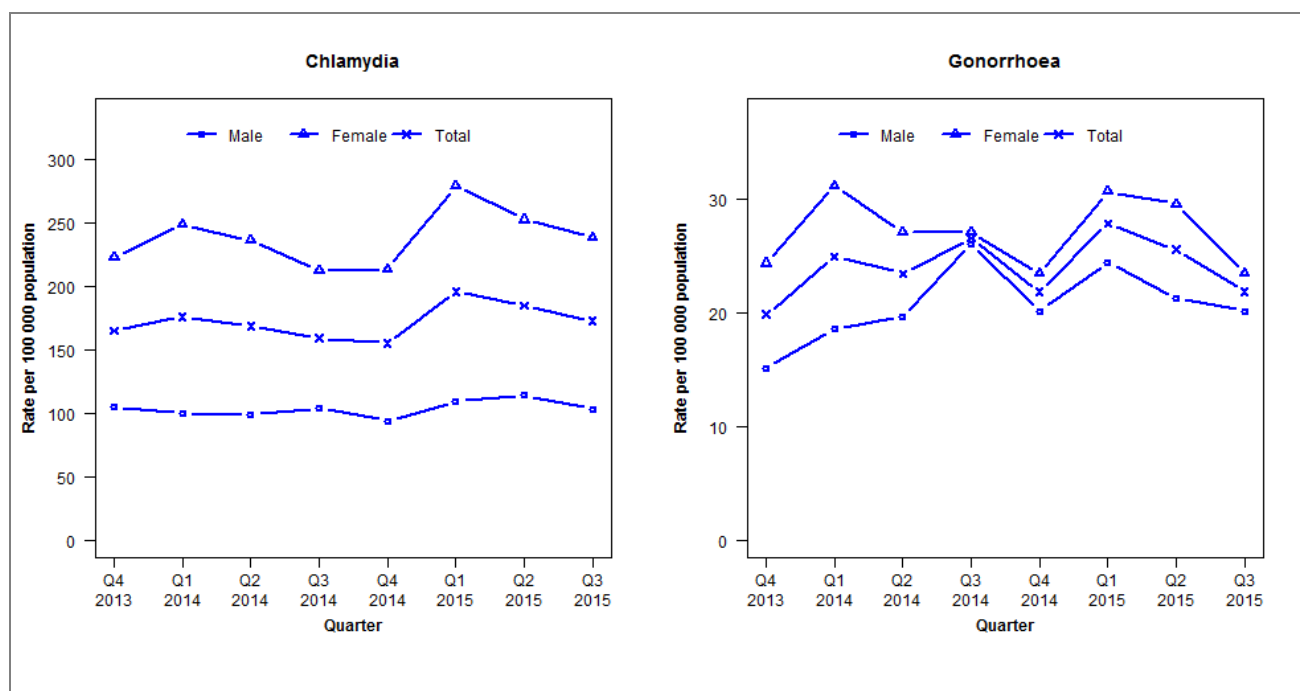
	Q4 2013	Q1 2014	Q2 2014	Q3 2014	Q4 2014	Q1 2015	Q2 2015	Q3 2015
<b>Number of lab-confirmed cases<sup>1</sup></b>	328	345	288	316	322	477	388	454
<i>Female</i>	136	125	113	118	117	157	143	188
<i>Male</i>	191	218	175	195	202	319	245	266
<b>Tests per 100 000 population<sup>2</sup></b>	2648	2841	2795	2898	2819	3030	3002	2985

<sup>1</sup>Total includes cases where sex is not reported

<sup>2</sup>Denominator = Statistics New Zealand mid-year population estimates

## Laboratory surveillance of chlamydia and gonorrhoea: July - September 2015

Quarterly chlamydia and gonorrhoea rates (female, male and total population), Oct 2013 to Sep 2015



Denominator = Statistics New Zealand mid-year population estimates

Note: Data processing methods allow for exclusion of repeat tests. Additional 2014 data received has been included may have impacted slightly on the counts produced.

### Number of lab confirmed chlamydia cases (female, male and total population) and number of tests per 100 000 population, October 2013 to September 2015

	Q4 2013	Q1 2014	Q2 2014	Q3 2014	Q4 2014	Q1 2015	Q2 2015	Q3 2015
<b>Number of lab-confirmed cases<sup>1</sup></b>	617	677	649	612	597	753	710	664
<i>Female</i>	422	488	463	416	419	547	495	468
<i>Male</i>	194	188	186	196	177	206	215	195
<b>Tests per 100 000 population<sup>2</sup></b>	1960	2025	2044	2072	1956	2225	2158	2212

<sup>1</sup>Total includes cases where sex is not reported

<sup>2</sup>Denominator = Statistics New Zealand mid-year population estimates

### Number of lab confirmed gonorrhoea cases (female, male and total population) and number of tests per 100 000 population, October 2013 to September 2015

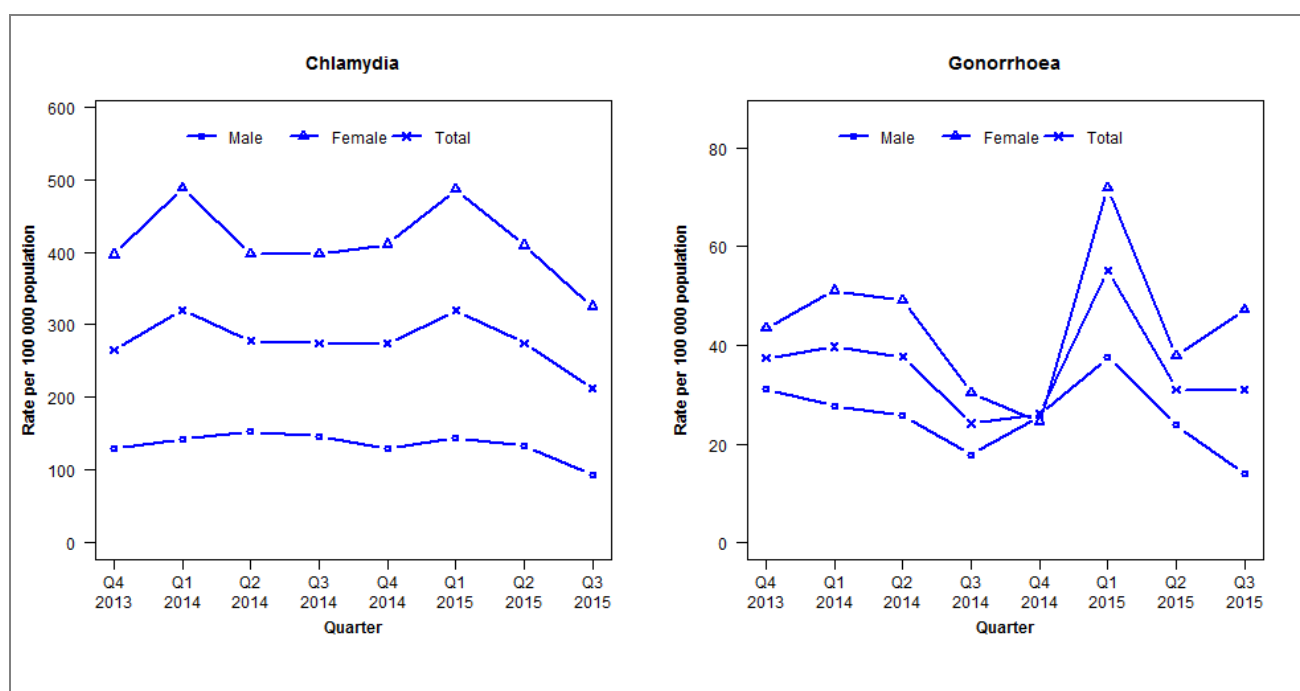
	Q4 2013	Q1 2014	Q2 2014	Q3 2014	Q4 2014	Q1 2015	Q2 2015	Q3 2015
<b>Number of lab-confirmed cases<sup>1</sup></b>	74	96	90	102	84	107	98	84
<i>Female</i>	46	61	53	53	46	60	58	46
<i>Male</i>	28	35	37	49	38	46	40	38
<b>Tests per 100 000 population<sup>2</sup></b>	2508	2502	2515	2525	2401	2651	2519	2590

<sup>1</sup>Total includes cases where sex is not reported

<sup>2</sup>Denominator = Statistics New Zealand mid-year population estimates

## Laboratory surveillance of chlamydia and gonorrhoea: July - September 2015

Quarterly chlamydia and gonorrhoea rates (female, male and total population), Oct 2013 to Sep 2015



Denominator = Statistics New Zealand mid-year population estimates

Note: Data processing methods allow for exclusion of repeat tests. Additional 2014 data received has been included and may have impacted slightly on the counts and rates produced. NAAT Gonorrhoea testing introduced for Pathlab Rotorua 1 July 2013.

### Number of lab confirmed chlamydia cases (female, male and total population) and number of tests per 100 000 population, October 2013 to September 2015

	Q4 2013	Q1 2014	Q2 2014	Q3 2014	Q4 2014	Q1 2015	Q2 2015	Q3 2015
<b>Number of lab-confirmed cases<sup>1</sup></b>	277	331	287	284	283	330	284	219
<i>Female</i>	210	258	210	210	217	257	216	172
<i>Male</i>	66	72	77	74	65	73	67	47
<b>Tests per 100 000 population<sup>2</sup></b>	2602	2858	2661	2782	2654	3022	2850	2787

<sup>1</sup>Total includes cases where sex is not reported

<sup>2</sup>Denominator = Statistics New Zealand mid-year population estimates

### Number of lab confirmed gonorrhoea cases (female, male and total population) and number of tests per 100 000 population, October 2013 to September 2015

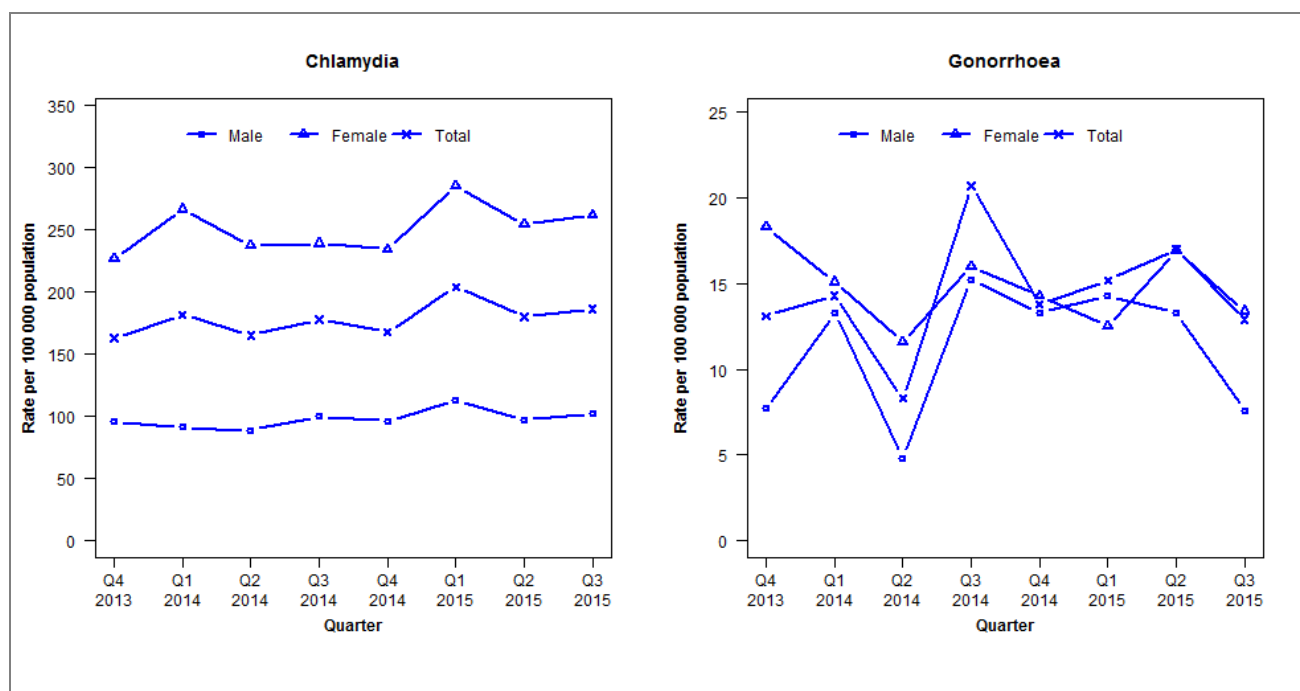
	Q4 2013	Q1 2014	Q2 2014	Q3 2014	Q4 2014	Q1 2015	Q2 2015	Q3 2015
<b>Number of lab-confirmed cases<sup>1</sup></b>	39	41	39	25	27	57	32	32
<i>Female</i>	23	27	26	16	13	38	20	25
<i>Male</i>	16	14	13	9	13	19	12	7
<b>Tests per 100 000 population<sup>2</sup></b>	2688	2899	2671	2791	2665	3040	2858	2800

<sup>1</sup>Total includes cases where sex is not reported

<sup>2</sup>Denominator = Statistics New Zealand mid-year population estimates

## Laboratory surveillance of chlamydia and gonorrhoea: July - September 2015

Quarterly chlamydia and gonorrhoea rates (female, male and total population), Oct 2013 to Sep 2015



Denominator = Statistics New Zealand mid-year population estimates

Note: Data processing methods allow for exclusion of repeat tests. Additional 2014 data received has been included and may have impacted slightly on the counts and rates produced. NAAT (nucleic acid amplification testing) for gonorrhoea testing was introduced in Q3 2013.

### Number of lab confirmed chlamydia cases (female, male and total population) and number of tests per 100 000 population, October 2013 to September 2015

	Q4 2013	Q1 2014	Q2 2014	Q3 2014	Q4 2014	Q1 2015	Q2 2015	Q3 2015
<b>Number of lab-confirmed cases<sup>1</sup></b>	347	395	359	386	364	443	391	405
<i>Female</i>	248	299	266	268	263	320	285	294
<i>Male</i>	99	96	93	105	101	119	102	107
<b>Tests per 100 000 population<sup>2</sup></b>	2003	2117	1983	2092	2002	2196	2071	2130

<sup>1</sup>Total includes cases where sex is not reported

<sup>2</sup>Denominator = Statistics New Zealand mid-year population estimates

### Number of lab confirmed gonorrhoea cases (female, male and total population) and number of tests per 100 000 population, October 2013 to September 2015

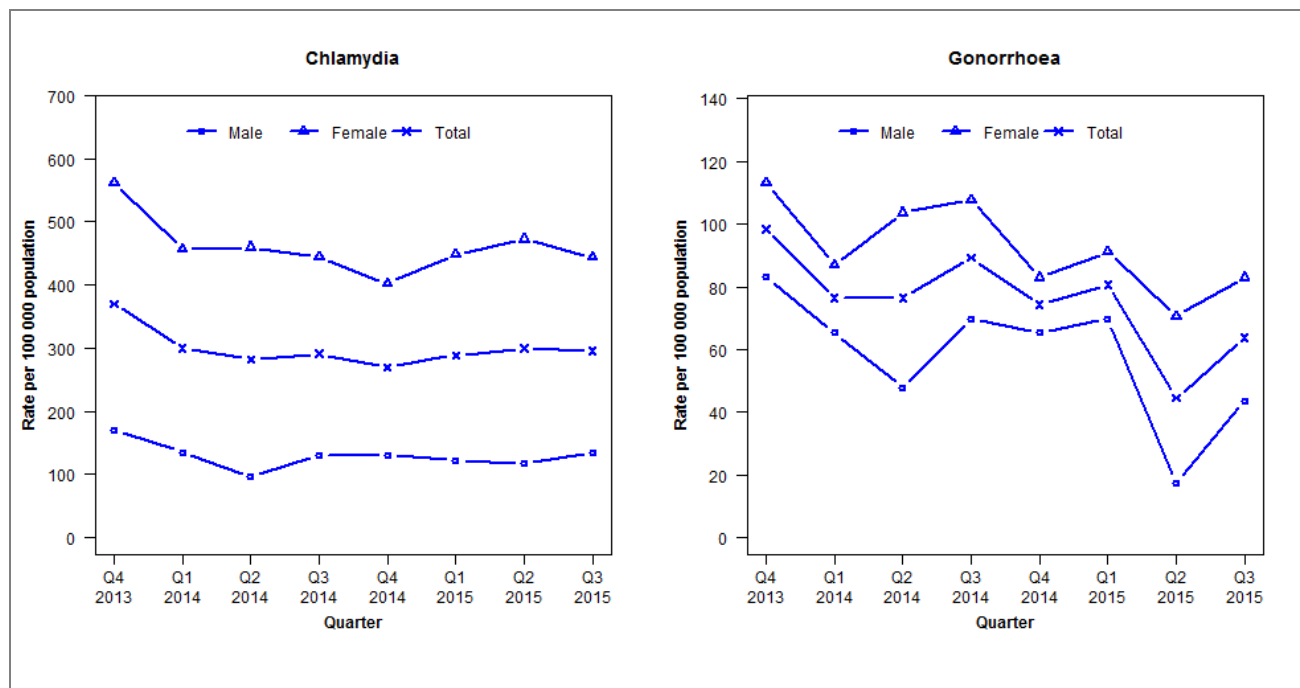
	Q4 2013	Q1 2014	Q2 2014	Q3 2014	Q4 2014	Q1 2015	Q2 2015	Q3 2015
<b>Number of lab-confirmed cases<sup>1</sup></b>	28	31	18	45	30	33	37	28
<i>Female</i>	20	17	13	18	16	14	19	15
<i>Male</i>	8	14	5	16	14	15	14	8
<b>Tests per 100 000 population<sup>2</sup></b>	2153	2173	1984	2093	2006	2202	2072	2132

<sup>1</sup>Total includes cases where sex is not reported

<sup>2</sup>Denominator = Statistics New Zealand mid-year population estimates

## Laboratory surveillance of chlamydia and gonorrhoea: July - September 2015

Quarterly chlamydia and gonorrhoea rates (female, male and total population), Oct 2013 to Sep 2015



Denominator = Statistics New Zealand mid-year population estimates

Note: Data processing methods allow for exclusion of repeat tests.

### Number of lab confirmed chlamydia cases (female, male and total population) and number of tests per 100 000 population, October 2013 to September 2015

	Q4 2013	Q1 2014	Q2 2014	Q3 2014	Q4 2014	Q1 2015	Q2 2015	Q3 2015
<b>Number of lab-confirmed cases<sup>1</sup></b>	173	141	133	137	127	136	141	139
<i>Female</i>	134	110	111	107	97	108	114	107
<i>Male</i>	39	31	22	30	30	28	27	31
<b>Tests per 100 000 population<sup>2</sup></b>	2480	2255	2205	2349	2134	2083	2171	2357

<sup>1</sup>Total includes cases where sex is not reported

<sup>2</sup>Denominator = Statistics New Zealand mid-year population estimates

### Number of lab confirmed gonorrhoea cases (female, male and total population) and number of tests per 100 000 population, October 2013 to September 2015

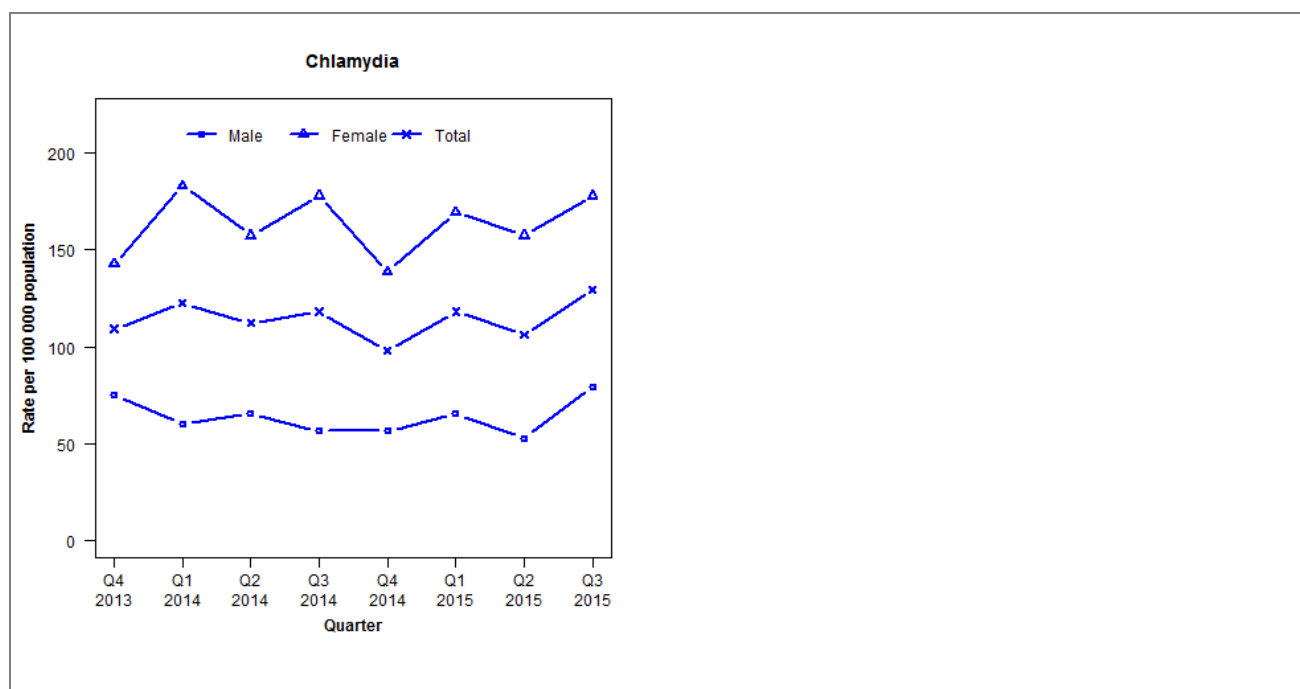
	Q4 2013	Q1 2014	Q2 2014	Q3 2014	Q4 2014	Q1 2015	Q2 2015	Q3 2015
<b>Number of lab-confirmed cases<sup>1</sup></b>	46	36	36	42	35	38	21	30
<i>Female</i>	27	21	25	26	20	22	17	20
<i>Male</i>	19	15	11	16	15	16	4	10
<b>Tests per 100 000 population<sup>2</sup></b>	2354	2260	2268	2383	2224	2202	2251	2430

<sup>1</sup>Total includes cases where sex is not reported

<sup>2</sup>Denominator = Statistics New Zealand mid-year population estimates

## Laboratory surveillance of chlamydia and gonorrhoea: July - September 2015

Quarterly chlamydia and gonorrhoea rates (female, male and total population), Oct 2013 to Sep 2015



Denominator = Statistics New Zealand mid-year population estimates

Note: Data processing methods allow for exclusion of repeat tests. Gonorrhoea rates are not presented as there are fewer than five cases in many quarters.

### Number of lab confirmed chlamydia cases (female, male and total population) and number of tests per 100 000 population, October 2013 to September 2015

	Q4 2013	Q1 2014	Q2 2014	Q3 2014	Q4 2014	Q1 2015	Q2 2015	Q3 2015
<b>Number of lab-confirmed cases<sup>1</sup></b>	121	141	129	136	113	136	122	149
<i>Female</i>	80	107	92	104	81	99	92	104
<i>Male</i>	41	34	37	32	32	37	30	45
<b>Tests per 100 000 population<sup>2</sup></b>	2011	2004	1956	2000	1893	1917	1799	2008

<sup>1</sup>Total includes cases where sex is not reported

<sup>2</sup>Denominator = Statistics New Zealand mid-year population estimates

### Number of lab confirmed gonorrhoea cases (female, male and total population) and number of tests per 100 000 population, October 2013 to September 2015

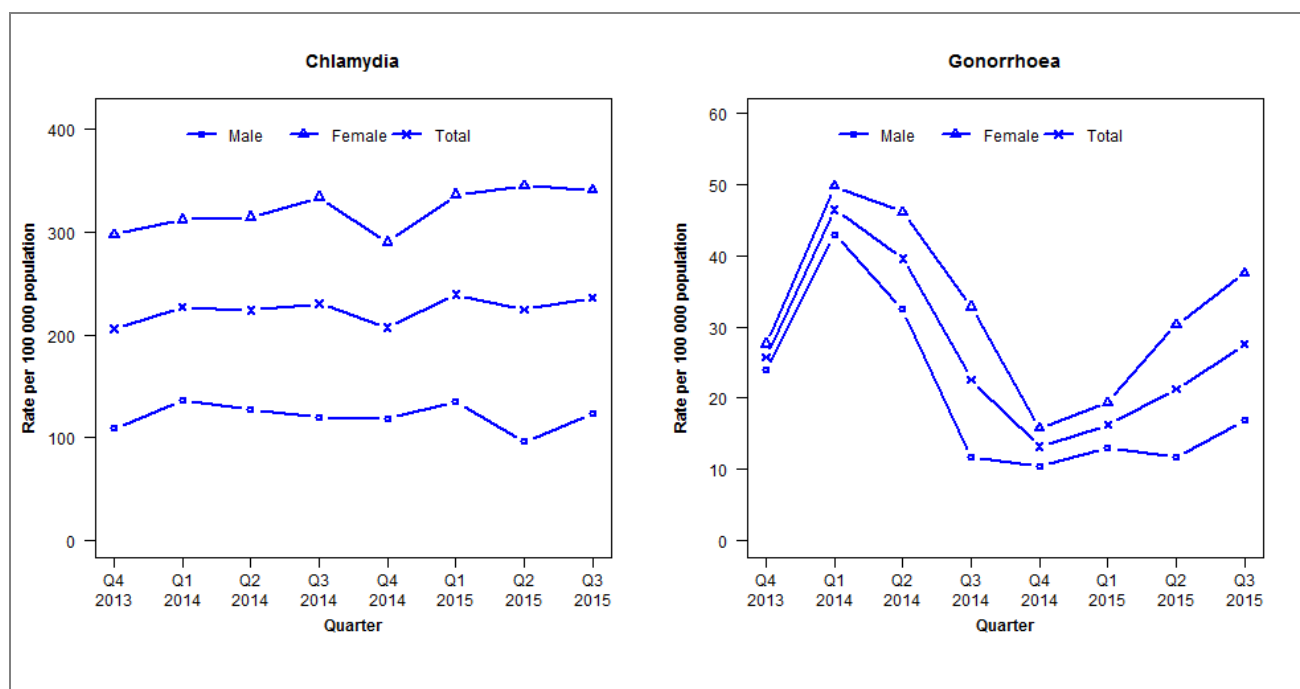
	Q4 2013	Q1 2014	Q2 2014	Q3 2014	Q4 2014	Q1 2015	Q2 2015	Q3 2015
<b>Number of lab-confirmed cases<sup>1</sup></b>	0	5	11	10	1	0	8	1
<i>Female</i>	0	2	5	6	0	0	4	1
<i>Male</i>	0	1	6	4	1	0	4	0
<b>Tests per 100 000 population<sup>2</sup></b>	2399	2569	2398	2524	2319	2346	2192	2450

<sup>1</sup>Total includes cases where sex is not reported

<sup>2</sup>Denominator = Statistics New Zealand mid-year population estimates

## Laboratory surveillance of chlamydia and gonorrhoea: July - September 2015

Quarterly chlamydia and gonorrhoea rates (female, male and total population), Oct 2013 to Sep 2015



Denominator = Statistics New Zealand mid-year population estimates

Note: Data processing methods allow for exclusion of repeat tests.

### Number of lab confirmed chlamydia cases (female, male and total population) and number of tests per 100 000 population, October 2013 to September 2015

	Q4 2013	Q1 2014	Q2 2014	Q3 2014	Q4 2014	Q1 2015	Q2 2015	Q3 2015
<b>Number of lab-confirmed cases<sup>1</sup></b>	319	362	357	367	330	381	358	376
<b>Female</b>	237	257	259	275	239	277	284	281
<b>Male</b>	82	105	98	92	91	104	74	95
<b>Tests per 100 000 population<sup>2</sup></b>	1929	1941	1918	1958	1839	2134	1974	2107

<sup>1</sup>Total includes cases where sex is not reported

<sup>2</sup>Denominator = Statistics New Zealand mid-year population estimates

### Number of lab confirmed gonorrhoea cases (female, male and total population) and number of tests per 100 000 population, October 2013 to September 2015

	Q4 2013	Q1 2014	Q2 2014	Q3 2014	Q4 2014	Q1 2015	Q2 2015	Q3 2015
<b>Number of lab-confirmed cases<sup>1</sup></b>	40	74	63	36	21	26	34	44
<b>Female</b>	22	41	38	27	13	16	25	31
<b>Male</b>	18	33	25	9	8	10	9	13
<b>Tests per 100 000 population<sup>2</sup></b>	2317	2311	2265	2290	2160	2447	2220	2361

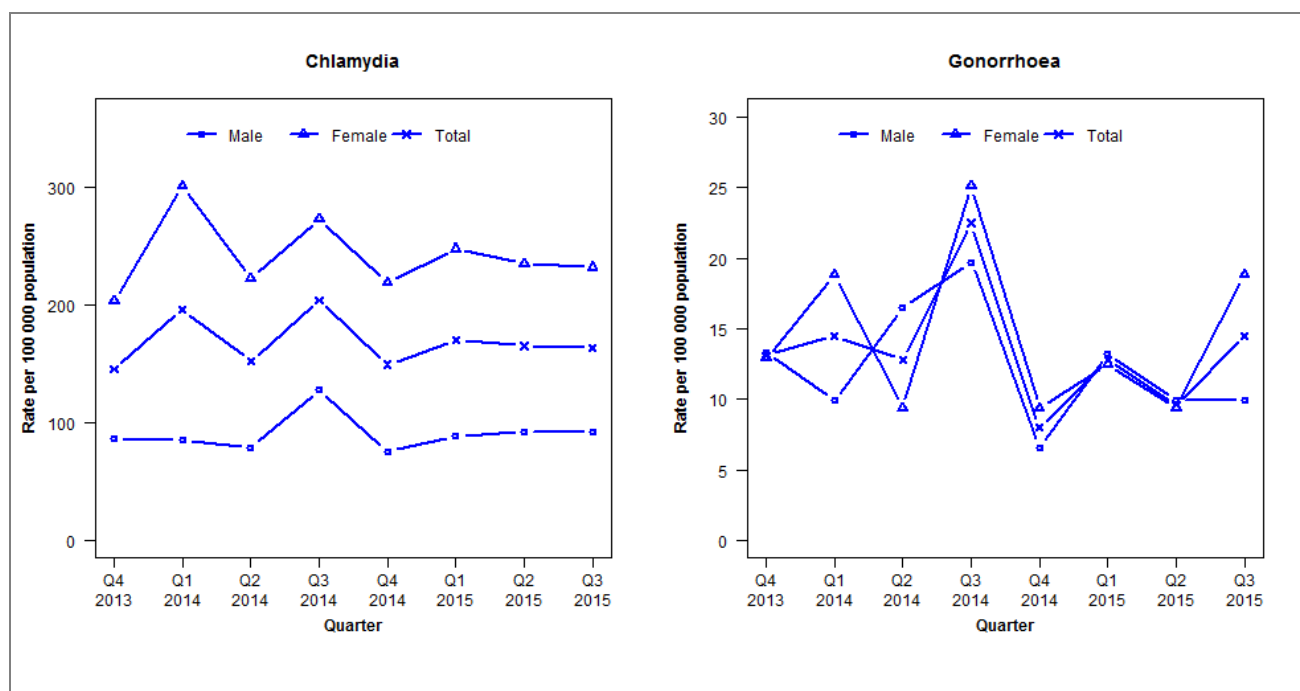
<sup>1</sup>Total includes cases where sex is not reported

<sup>2</sup>Denominator = Statistics New Zealand mid-year population estimates



## Laboratory surveillance of chlamydia and gonorrhoea: July - September 2015

Quarterly chlamydia and gonorrhoea rates (female, male and total population), Oct 2013 to Sep 2015



Denominator = Statistics New Zealand mid-year population estimates

Note: Data processing methods allow for exclusion of repeat tests. NAAT testing introduced in Q1 2014.

### Number of lab confirmed chlamydia cases (female, male and total population) and number of tests per 100 000 population, October 2013 to September 2015

	Q4 2013	Q1 2014	Q2 2014	Q3 2014	Q4 2014	Q1 2015	Q2 2015	Q3 2015
<b>Number of lab-confirmed cases<sup>1</sup></b>	89	122	95	127	93	106	103	102
<i>Female</i>	63	96	71	87	70	79	75	74
<i>Male</i>	26	26	24	39	23	27	28	28
<b>Tests per 100 000 population<sup>2</sup></b>	1576	1906	1808	1873	1722	1698	1709	1832

<sup>1</sup>Total includes cases where sex is not reported

<sup>2</sup>Denominator = Statistics New Zealand mid-year population estimates

### Number of lab confirmed gonorrhoea cases (female, male and total population) and number of tests per 100 000 population, October 2013 to September 2015

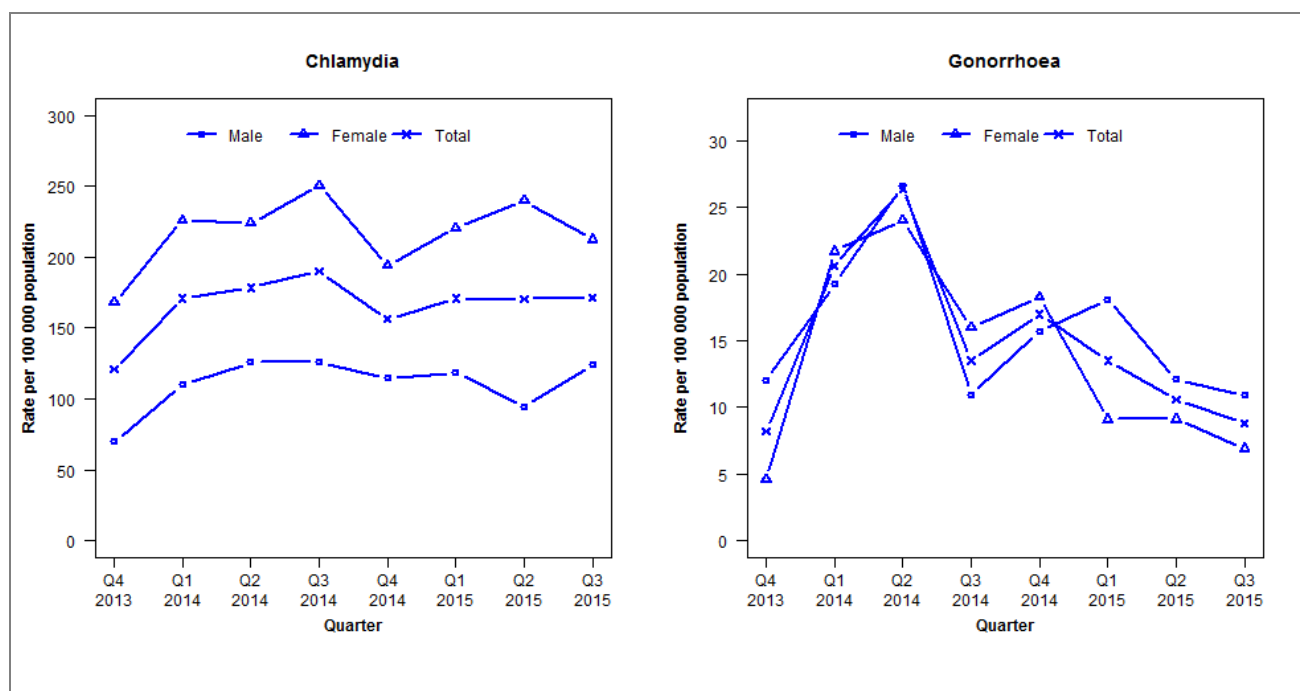
	Q4 2013	Q1 2014	Q2 2014	Q3 2014	Q4 2014	Q1 2015	Q2 2015	Q3 2015
<b>Number of lab-confirmed cases<sup>1</sup></b>	8	9	8	14	5	8	6	9
<i>Female</i>	4	6	3	8	3	4	3	6
<i>Male</i>	4	3	5	6	2	4	3	3
<b>Tests per 100 000 population<sup>2</sup></b>	975	1627	1804	1881	1768	1744	1754	1874

<sup>1</sup>Total includes cases where sex is not reported

<sup>2</sup>Denominator = Statistics New Zealand mid-year population estimates

## Laboratory surveillance of chlamydia and gonorrhoea: July - September 2015

Quarterly chlamydia and gonorrhoea rates (female, male and total population), Oct 2013 to Sep 2015



Denominator = Statistics New Zealand mid-year population estimates

Note: Data processing procedures allow for exclusion of repeat tests. NAAT testing introduced in Q1 2014.

### Number of lab confirmed chlamydia cases (female, male and total population) and number of tests per 100 000 population, October 2013 to September 2015

	Q4 2013	Q1 2014	Q2 2014	Q3 2014	Q4 2014	Q1 2015	Q2 2015	Q3 2015
<b>Number of lab-confirmed cases<sup>1</sup></b>	205	291	304	323	266	291	290	292
<b>Female</b>	146	198	196	219	170	193	210	186
<b>Male</b>	58	91	104	104	95	98	78	103
<b>Tests per 100 000 population<sup>2</sup></b>	1564	1686	1772	1903	1744	1912	1842	1996

<sup>1</sup>Total includes cases where sex is not reported

<sup>2</sup>Denominator = Statistics New Zealand mid-year population estimates

### Number of lab confirmed gonorrhoea cases (female, male and total population) and number of tests per 100 000 population, October 2013 to September 2015

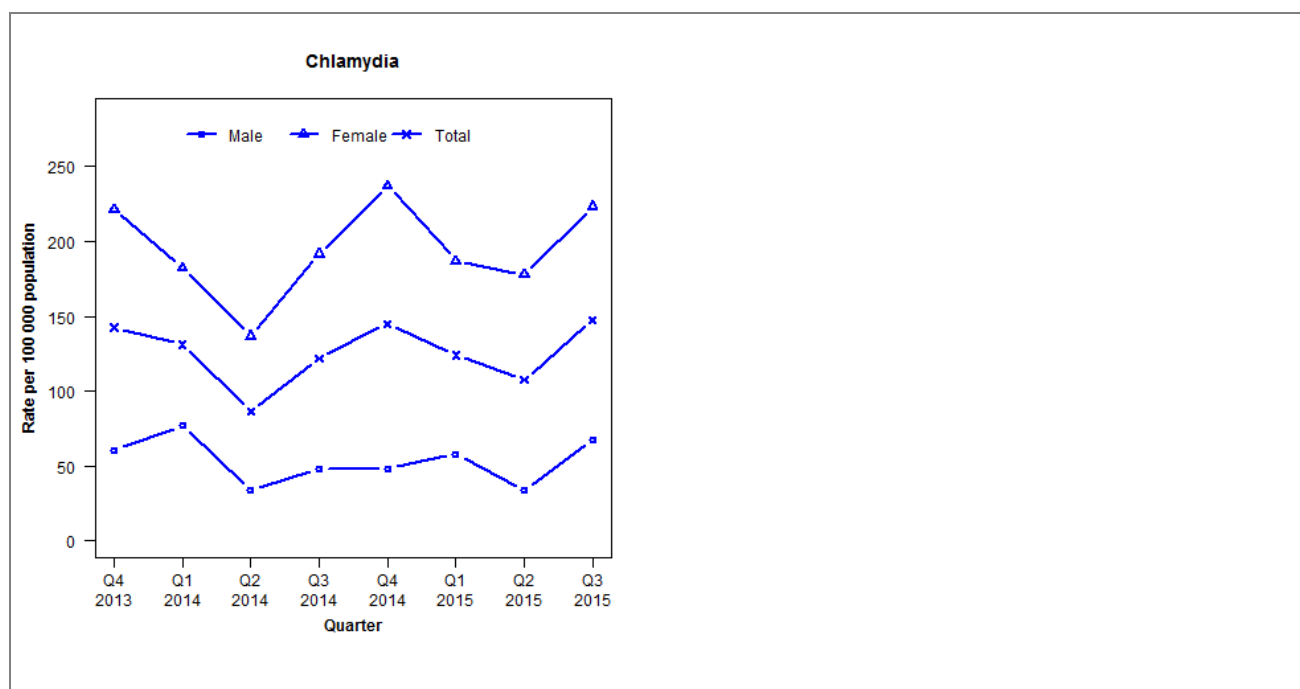
	Q4 2013	Q1 2014	Q2 2014	Q3 2014	Q4 2014	Q1 2015	Q2 2015	Q3 2015
<b>Number of lab-confirmed cases<sup>1</sup></b>	14	35	45	23	29	23	18	15
<b>Female</b>	4	19	21	14	16	8	8	6
<b>Male</b>	10	16	22	9	13	15	10	9
<b>Tests per 100 000 population<sup>2</sup></b>	1276	1591	1809	1943	1794	1962	1896	2038

<sup>1</sup>Total includes cases where sex is not reported

<sup>2</sup>Denominator = Statistics New Zealand mid-year population estimates

## Laboratory surveillance of chlamydia and gonorrhoea: July - September 2015

Quarterly chlamydia and gonorrhoea rates (female, male and total population), Oct 2013 to Sep 2015



Denominator = Statistics New Zealand mid-year population estimates

Note: Data processing methods allow for exclusion of repeat tests. Gonorrhoea rates are not presented as there are fewer than five cases in many quarters.

### Number of lab confirmed chlamydia cases (female, male and total population) and number of tests per 100 000 population, October 2013 to September 2015

	Q4 2013	Q1 2014	Q2 2014	Q3 2014	Q4 2014	Q1 2015	Q2 2015	Q3 2015
<b>Number of lab-confirmed cases<sup>1</sup></b>	58	56	37	52	62	53	46	63
<i>Female</i>	46	40	30	42	52	41	39	49
<i>Male</i>	12	16	7	10	10	12	7	14
<b>Tests per 100 000 population<sup>2</sup></b>	1481	1422	1319	1476	1378	1404	1256	1603

<sup>1</sup>Total includes cases where sex is not reported

<sup>2</sup>Denominator = Statistics New Zealand mid-year population estimates

### Number of lab confirmed gonorrhoea cases (female, male and total population) and number of tests per 100 000 population, October 2013 to September 2015

	Q4 2013	Q1 2014	Q2 2014	Q3 2014	Q4 2014	Q1 2015	Q2 2015	Q3 2015
<b>Number of lab-confirmed cases<sup>1</sup></b>	3	3	2	4	1	2	1	1
<i>Female</i>	2	1	1	1	1	1	1	0
<i>Male</i>	1	2	1	3	0	1	0	1
<b>Tests per 100 000 population<sup>2</sup></b>	1048	1172	1287	1441	1399	1434	1282	1621

<sup>1</sup>Total includes cases where sex is not reported

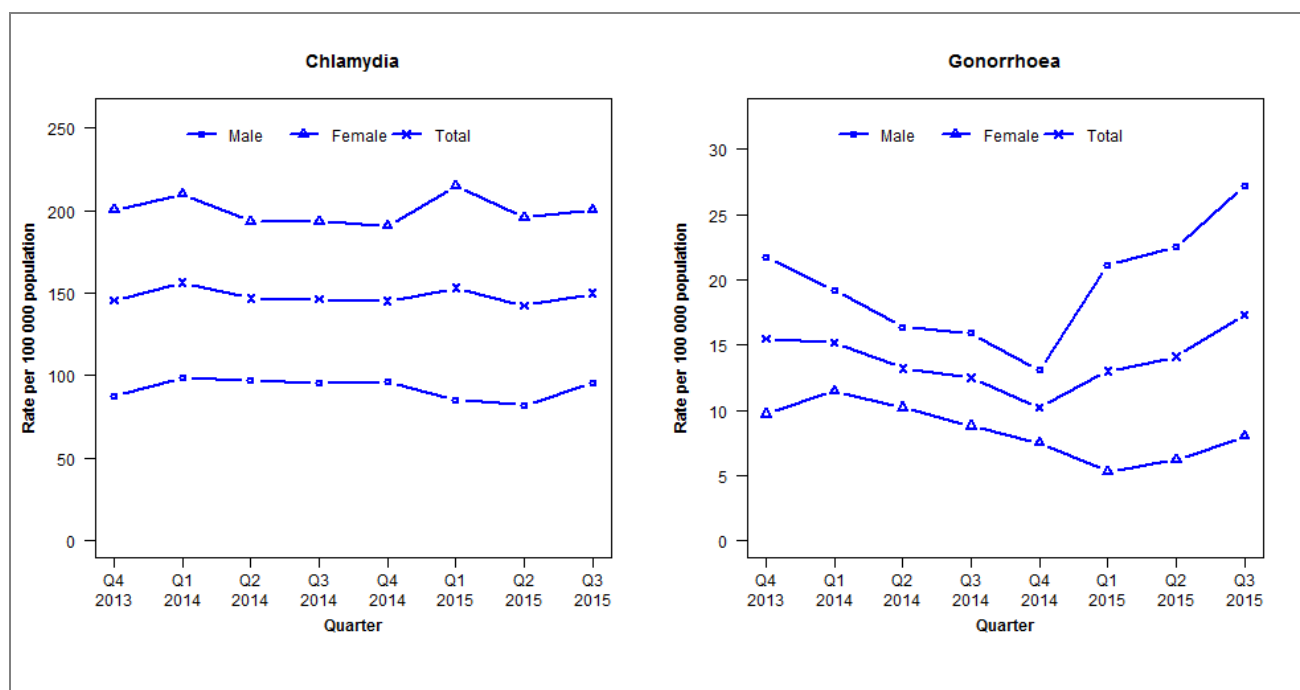
<sup>2</sup>Denominator = Statistics New Zealand mid-year population estimates

## WELLINGTON REGION

Capital and Coast and Hutt Valley DHBs

## Laboratory surveillance of chlamydia and gonorrhoea: July - September 2015

Quarterly chlamydia and gonorrhoea rates (female, male and total population), Oct 2013 to Sep 2015



Denominator = Statistics New Zealand mid-year population estimates

Note: Data processing methods allow for exclusion of repeat tests.

## Number of lab confirmed chlamydia cases (female, male and total population) and number of tests per 100 000 population, October 2013 to September 2015

	Q4 2013	Q1 2014	Q2 2014	Q3 2014	Q4 2014	Q1 2015	Q2 2015	Q3 2015
<b>Number of lab-confirmed cases<sup>1</sup></b>	646	688	646	643	638	673	625	659
<i>Female</i>	454	475	437	437	431	486	443	453
<i>Male</i>	189	211	207	204	205	182	175	204
<b>Tests per 100 000 population<sup>2</sup></b>	2323	2446	2445	2538	2387	2543	2584	2621

<sup>1</sup>Total includes cases where sex is not reported<sup>2</sup>Denominator = Statistics New Zealand mid-year population estimates

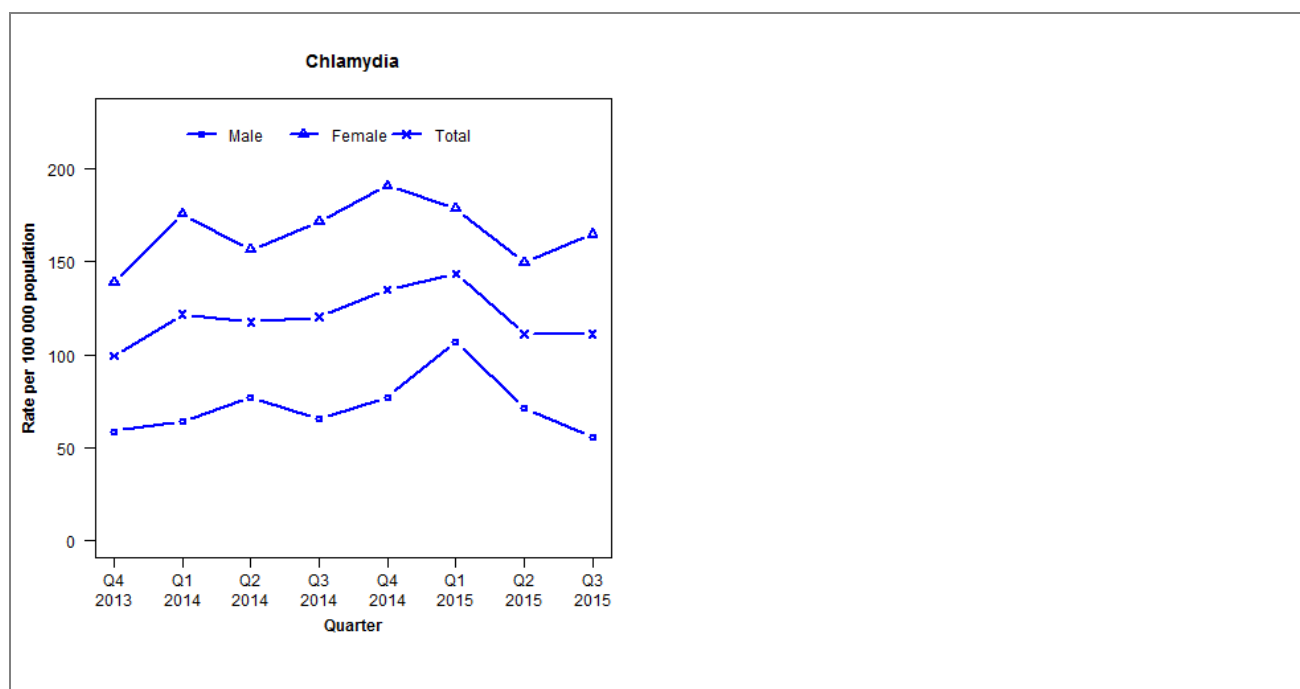
## Number of lab confirmed gonorrhoea cases (female, male and total population) and number of tests per 100 000 population, October 2013 to September 2015

	Q4 2013	Q1 2014	Q2 2014	Q3 2014	Q4 2014	Q1 2015	Q2 2015	Q3 2015
<b>Number of lab-confirmed cases<sup>1</sup></b>	69	67	58	55	45	57	62	76
<i>Female</i>	22	26	23	20	17	12	14	18
<i>Male</i>	47	41	35	34	28	45	48	58
<b>Tests per 100 000 population<sup>2</sup></b>	2231	2425	2433	2506	2350	2544	2586	2625

<sup>1</sup>Total includes cases where sex is not reported<sup>2</sup>Denominator = Statistics New Zealand mid-year population estimates

## Laboratory surveillance of chlamydia and gonorrhoea: July - September 2015

Quarterly chlamydia and gonorrhoea rates (female, male and total population), Oct 2013 to Sep 2015



Denominator = Statistics New Zealand mid-year population estimates

Note: Data processing procedures allow for exclusion of repeat tests. Gonorrhoea rates are not presented as there are fewer than five cases in many quarters.

### Number of lab confirmed chlamydia cases (female, male and total population) and number of tests per 100 000 population, October 2013 to September 2015

	Q4 2013	Q1 2014	Q2 2014	Q3 2014	Q4 2014	Q1 2015	Q2 2015	Q3 2015
<b>Number of lab-confirmed cases<sup>1</sup></b>	140	174	168	172	193	205	159	159
<i>Female</i>	99	128	114	125	139	130	109	120
<i>Male</i>	41	45	54	46	54	75	50	39
<b>Tests per 100 000 population<sup>2</sup></b>	1519	1684	1603	1601	1662	1714	1617	1615

<sup>1</sup>Total includes cases where sex is not reported

<sup>2</sup>Denominator = Statistics New Zealand mid-year population estimates

### Number of lab confirmed gonorrhoea cases (female, male and total population) and number of tests per 100 000 population, October 2013 to September 2015

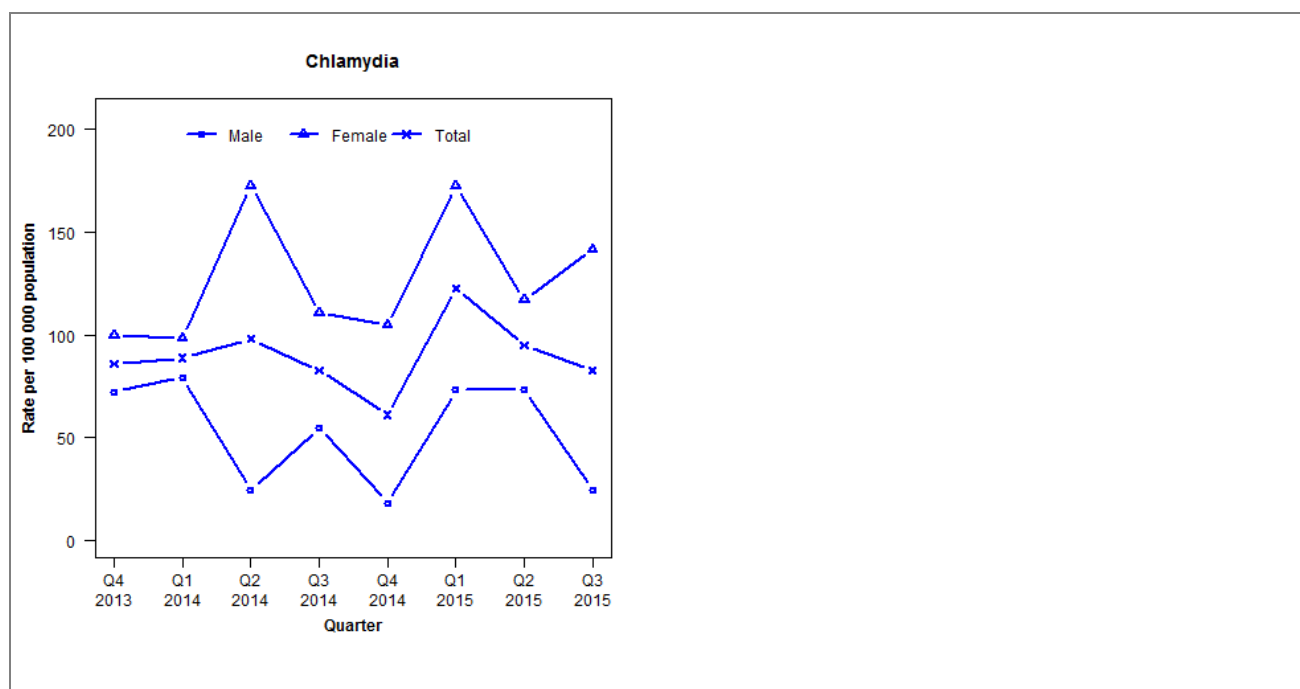
	Q4 2013	Q1 2014	Q2 2014	Q3 2014	Q4 2014	Q1 2015	Q2 2015	Q3 2015
<b>Number of lab-confirmed cases<sup>1</sup></b>	5	6	22	13	6	14	10	9
<i>Female</i>	1	1	11	8	4	7	5	7
<i>Male</i>	4	5	11	5	2	7	5	2
<b>Tests per 100 000 population<sup>2</sup></b>	3050	3186	1635	1611	1672	1734	1626	1618

<sup>1</sup>Total includes cases where sex is not reported

<sup>2</sup>Denominator = Statistics New Zealand mid-year population estimates

## Laboratory surveillance of chlamydia and gonorrhoea: July - September 2015

Quarterly chlamydia and gonorrhoea rates (female, male and total population), Oct 2013 to Sep 2015



Denominator = Statistics New Zealand mid-year population estimates

Note: Data processing methods allow for exclusion of repeat tests. Gonorrhoea rates are not presented as there are fewer than five cases in many quarters.

### Number of lab confirmed chlamydia cases (female, male and total population) and number of tests per 100 000 population, October 2013 to September 2015

	Q4 2013	Q1 2014	Q2 2014	Q3 2014	Q4 2014	Q1 2015	Q2 2015	Q3 2015
<b>Number of lab-confirmed cases<sup>1</sup></b>	28	29	32	27	20	40	31	27
<i>Female</i>	16	16	28	18	17	28	19	23
<i>Male</i>	12	13	4	9	3	12	12	4
<b>Tests per 100 000 population<sup>2</sup></b>	1469	1865	1693	1393	1476	1632	1497	1598

<sup>1</sup>Total includes cases where sex is not reported

<sup>2</sup>Denominator = Statistics New Zealand mid-year population estimates

### Number of lab confirmed gonorrhoea cases (female, male and total population) and number of tests per 100 000 population, October 2013 to September 2015

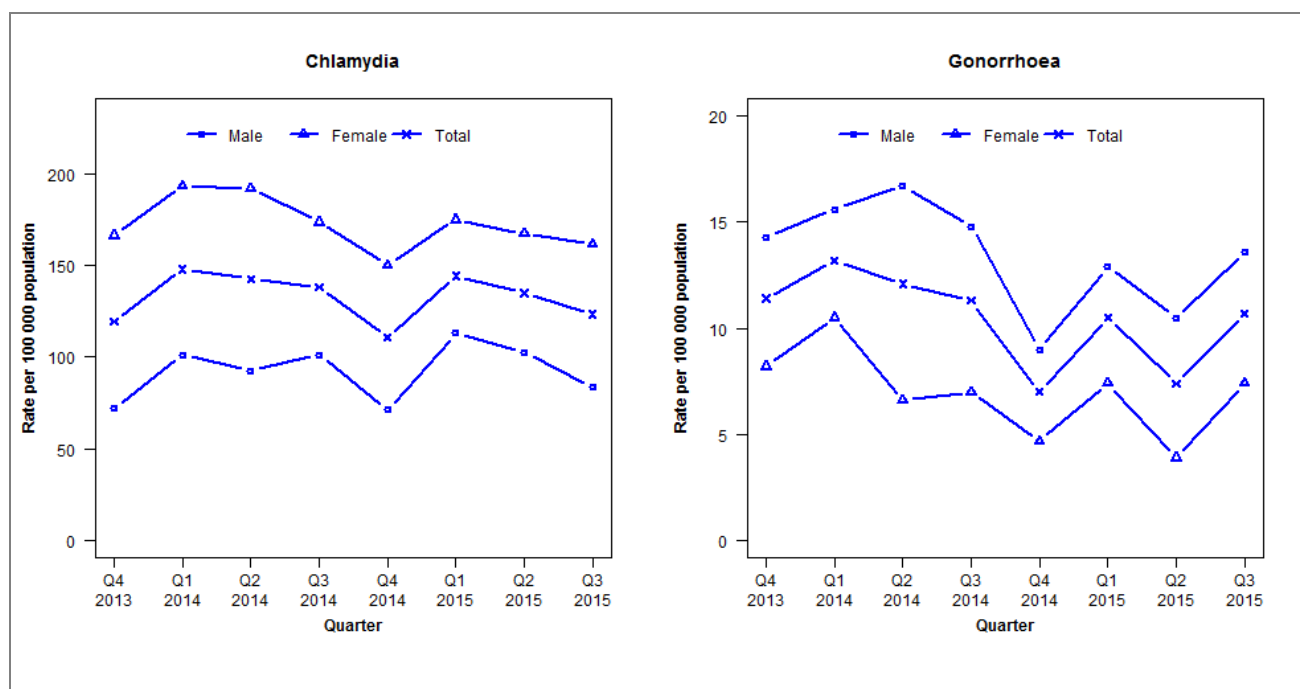
	Q4 2013	Q1 2014	Q2 2014	Q3 2014	Q4 2014	Q1 2015	Q2 2015	Q3 2015
<b>Number of lab-confirmed cases<sup>1</sup></b>	1	0	1	1	0	1	2	0
<i>Female</i>	0	0	0	0	0	0	1	0
<i>Male</i>	1	0	1	1	0	1	1	0
<b>Tests per 100 000 population<sup>2</sup></b>	1469	1865	1696	1393	1476	1632	1497	1598

<sup>1</sup>Total includes cases where sex is not reported

<sup>2</sup>Denominator = Statistics New Zealand mid-year population estimates

## Laboratory surveillance of chlamydia and gonorrhoea: July - September 2015

Quarterly chlamydia and gonorrhoea rates (female, male and total population), Oct 2013 to Sep 2015



Denominator = Statistics New Zealand mid-year population estimates

Note: Data processing methods allow for exclusion of repeat tests.

### Number of lab confirmed chlamydia cases (female, male and total population) and number of tests per 100 000 population, October 2013 to September 2015

	Q4 2013	Q1 2014	Q2 2014	Q3 2014	Q4 2014	Q1 2015	Q2 2015	Q3 2015
<b>Number of lab-confirmed cases<sup>1</sup></b>	606	760	732	709	569	741	693	633
<b>Female</b>	424	497	493	446	386	450	430	416
<b>Male</b>	182	260	238	260	183	290	263	214
<b>Tests per 100 000 population<sup>2</sup></b>	1976	2124	2112	2205	2014	2219	2191	2327

<sup>1</sup>Total includes cases where sex is not reported

<sup>2</sup>Denominator = Statistics New Zealand mid-year population estimates

### Number of lab confirmed gonorrhoea cases (female, male and total population) and number of tests per 100 000 population, October 2013 to September 2015

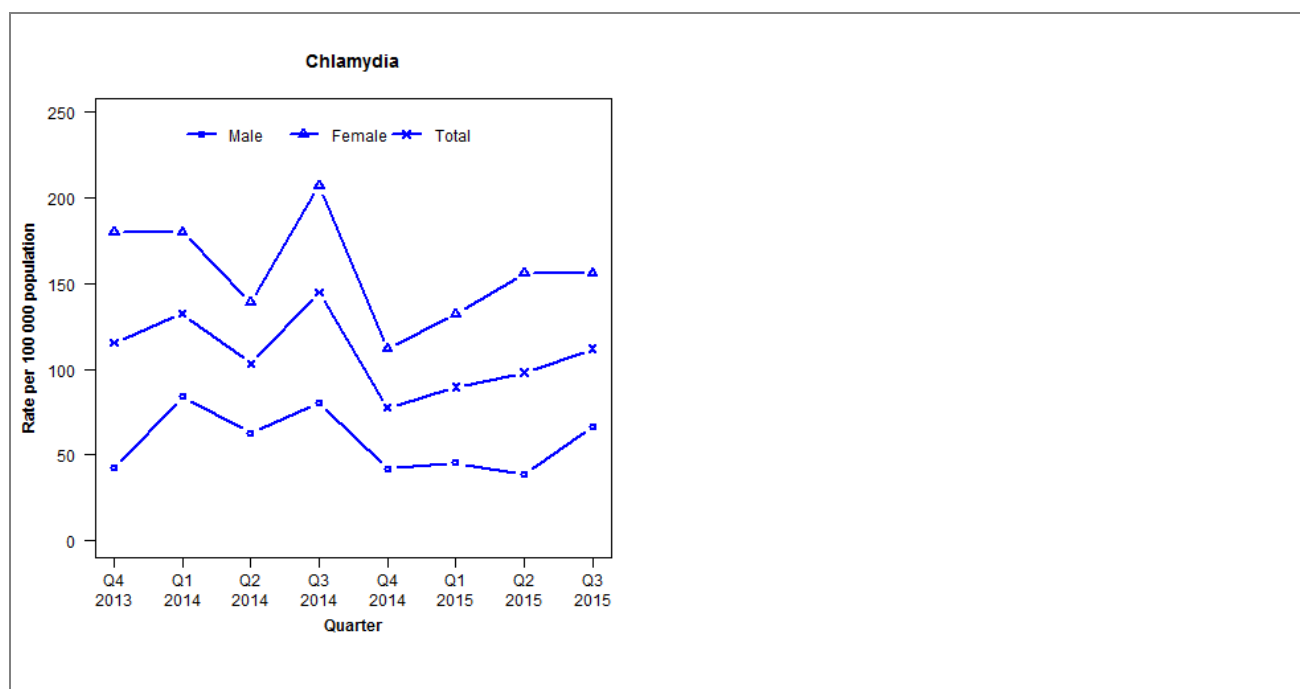
	Q4 2013	Q1 2014	Q2 2014	Q3 2014	Q4 2014	Q1 2015	Q2 2015	Q3 2015
<b>Number of lab-confirmed cases<sup>1</sup></b>	58	68	62	58	36	54	38	55
<b>Female</b>	21	27	17	18	12	19	10	19
<b>Male</b>	36	40	43	38	23	33	27	35
<b>Tests per 100 000 population<sup>2</sup></b>	2686	2853	2799	2929	2685	2899	2829	2977

<sup>1</sup>Total includes cases where sex is not reported

<sup>2</sup>Denominator = Statistics New Zealand mid-year population estimates

## Laboratory surveillance of chlamydia and gonorrhoea: July - September 2015

Quarterly chlamydia and gonorrhoea rates (female, male and total population), Oct 2013 to Sep 2015



Denominator = Statistics New Zealand mid-year population estimates

Note: Data processing methods introduced allow for exclusion of repeat tests. Gonorrhoea rates are not presented as there are fewer than five cases in many quarters.

### Number of lab confirmed chlamydia cases (female, male and total population) and number of tests per 100 000 population, October 2013 to September 2015

	Q4 2013	Q1 2014	Q2 2014	Q3 2014	Q4 2014	Q1 2015	Q2 2015	Q3 2015
<b>Number of lab-confirmed cases<sup>1</sup></b>	66	77	60	84	45	52	57	65
<i>Female</i>	52	53	41	61	33	39	46	46
<i>Male</i>	12	24	18	23	12	13	11	19
<b>Tests per 100 000 population<sup>2</sup></b>	1487	1455	1346	1524	1319	1513	1479	1623

<sup>1</sup>Total includes cases where sex is not reported

<sup>2</sup>Denominator = Statistics New Zealand mid-year population estimates

### Number of lab confirmed gonorrhoea cases (female, male and total population) and number of tests per 100 000 population, October 2013 to September 2015

	Q4 2013	Q1 2014	Q2 2014	Q3 2014	Q4 2014	Q1 2015	Q2 2015	Q3 2015
<b>Number of lab-confirmed cases<sup>1</sup></b>	2	6	5	2	2	0	2	1
<i>Female</i>	1	2	0	0	0	0	1	0
<i>Male</i>	0	4	4	2	1	0	1	1
<b>Tests per 100 000 population<sup>2</sup></b>	1940	1782	1661	1806	1687	1920	1887	2033

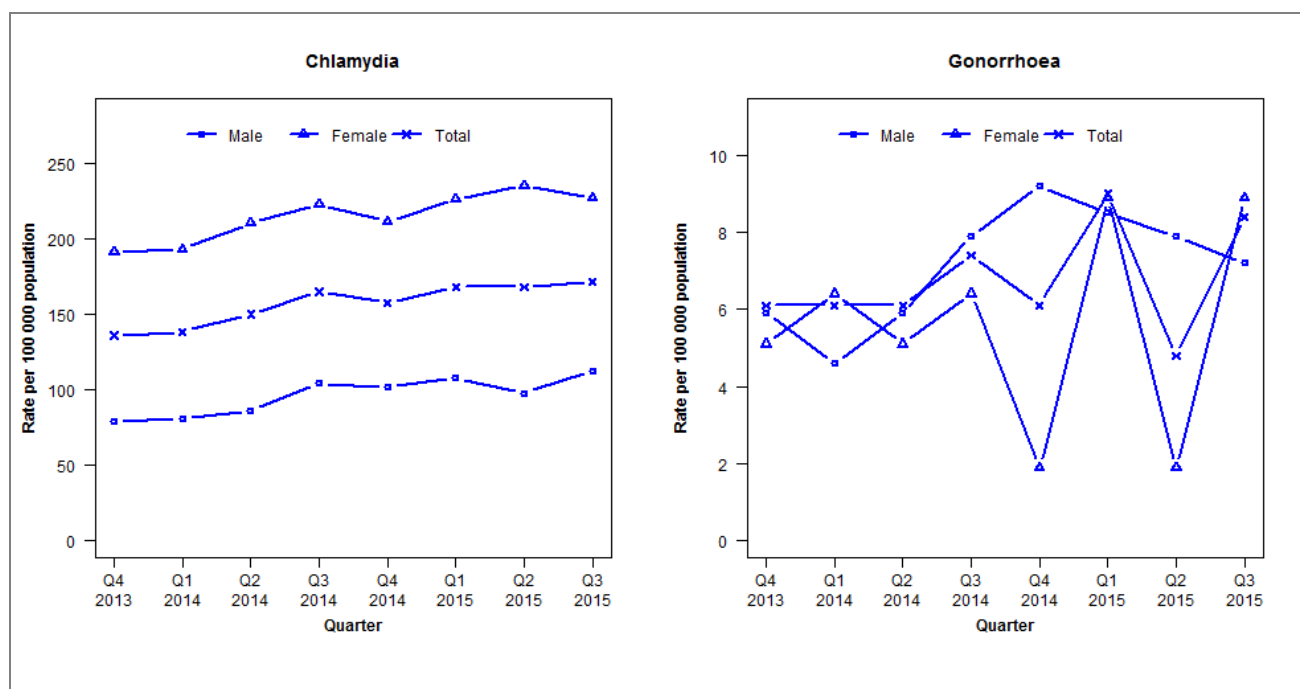
<sup>1</sup>Total includes cases where sex is not reported

<sup>2</sup>Denominator = Statistics New Zealand mid-year population estimates



## Laboratory surveillance of chlamydia and gonorrhoea: July - September 2015

Quarterly chlamydia and gonorrhoea rates (female, male and total population), Oct 2013 to Sep 2015



Denominator = Statistics New Zealand mid-year population estimates

Note: Data processing methods allow for exclusion of repeat tests.

### Number of lab confirmed chlamydia cases (female, male and total population) and number of tests per 100 000 population, October 2013 to September 2015

	Q4 2013	Q1 2014	Q2 2014	Q3 2014	Q4 2014	Q1 2015	Q2 2015	Q3 2015
<b>Number of lab-confirmed cases<sup>1</sup></b>	421	429	465	511	488	521	521	531
<i>Female</i>	299	304	331	351	333	356	370	358
<i>Male</i>	121	123	131	159	155	164	149	172
<b>Tests per 100 000 population<sup>2</sup></b>	2172	2272	2357	2467	2311	2413	2485	2576

<sup>1</sup>Total includes cases where sex is not reported

<sup>2</sup>Denominator = Statistics New Zealand mid-year population estimates

### Number of lab confirmed gonorrhoea cases (female, male and total population) and number of tests per 100 000 population, October 2013 to September 2015

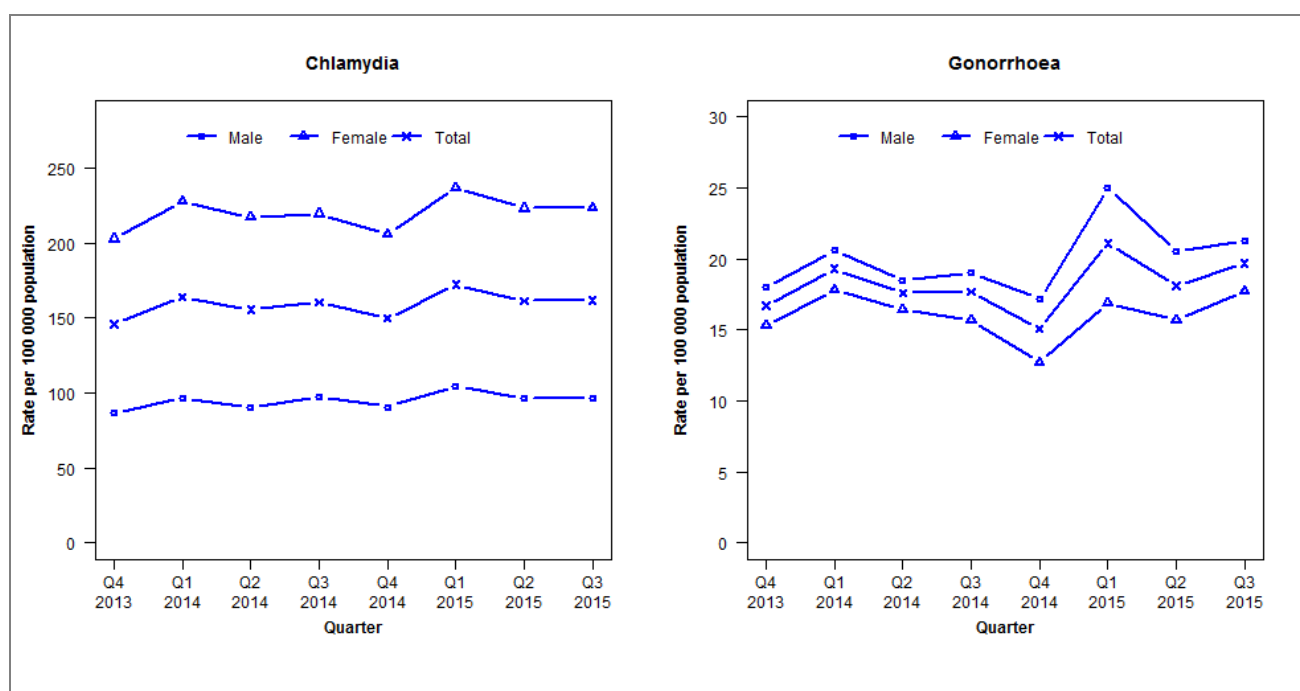
	Q4 2013	Q1 2014	Q2 2014	Q3 2014	Q4 2014	Q1 2015	Q2 2015	Q3 2015
<b>Number of lab-confirmed cases<sup>1</sup></b>	19	19	19	23	19	28	15	26
<i>Female</i>	8	10	8	10	3	14	3	14
<i>Male</i>	9	7	9	12	14	13	12	11
<b>Tests per 100 000 population<sup>2</sup></b>	2235	2330	2414	2520	2360	2479	2542	2628

<sup>1</sup>Total includes cases where sex is not reported

<sup>2</sup>Denominator = Statistics New Zealand mid-year population estimates

## Laboratory surveillance of chlamydia and gonorrhoea: July - September 2015

Quarterly chlamydia and gonorrhoea rates (female, male and total population), Oct 2013 to Sep 2015



Denominator = Statistics New Zealand mid-year population estimates

Note: Data processing methods allow for exclusion of repeat tests. NAAT (nucleic acid amplification testing) for gonorrhoea has been introduced in the majority of laboratories since 2012. Refer to DHB level reports for further details. Northland data incomplete from Q2 2013, but complete from Q1 2015 onwards. Data not received from Waitemata DHB for all quarters in 2013. Additional 2014 data received has been included and may have impacted slightly on the counts and rates produced.

### Number of lab confirmed chlamydia cases (female, male and total population) and number of tests per 100 000 population, October 2013 to September 2015

	Q4 2013	Q1 2014	Q2 2014	Q3 2014	Q4 2014	Q1 2015	Q2 2015	Q3 2015
<b>Number of lab-confirmed cases<sup>1</sup></b>	6515	7379	7005	7217	6740	7759	7268	7283
<i>Female</i>	4600	5231	4989	5041	4733	5439	5127	5132
<i>Male</i>	1903	2129	1999	2148	2001	2305	2123	2135
<b>Tests per 100 000 population<sup>2</sup></b>	2106	2228	2231	2312	2202	2379	2344	2398

<sup>1</sup>Total includes cases where sex is not reported

<sup>2</sup>Denominator = Statistics New Zealand mid-year population estimates

### Number of lab confirmed gonorrhoea cases (female, male and total population) and number of tests per 100 000 population, October 2013 to September 2015

	Q4 2013	Q1 2014	Q2 2014	Q3 2014	Q4 2014	Q1 2015	Q2 2015	Q3 2015
<b>Number of lab-confirmed cases<sup>1</sup></b>	748	870	794	800	679	951	817	886
<i>Female</i>	347	408	378	362	291	389	360	408
<i>Male</i>	396	455	409	420	380	553	452	471
<b>Tests per 100 000 population<sup>2</sup></b>	2394	2539	2471	2560	2441	2658	2601	2665

<sup>1</sup>Total includes cases where sex is not reported

<sup>2</sup>Denominator = Statistics New Zealand mid-year population estimates