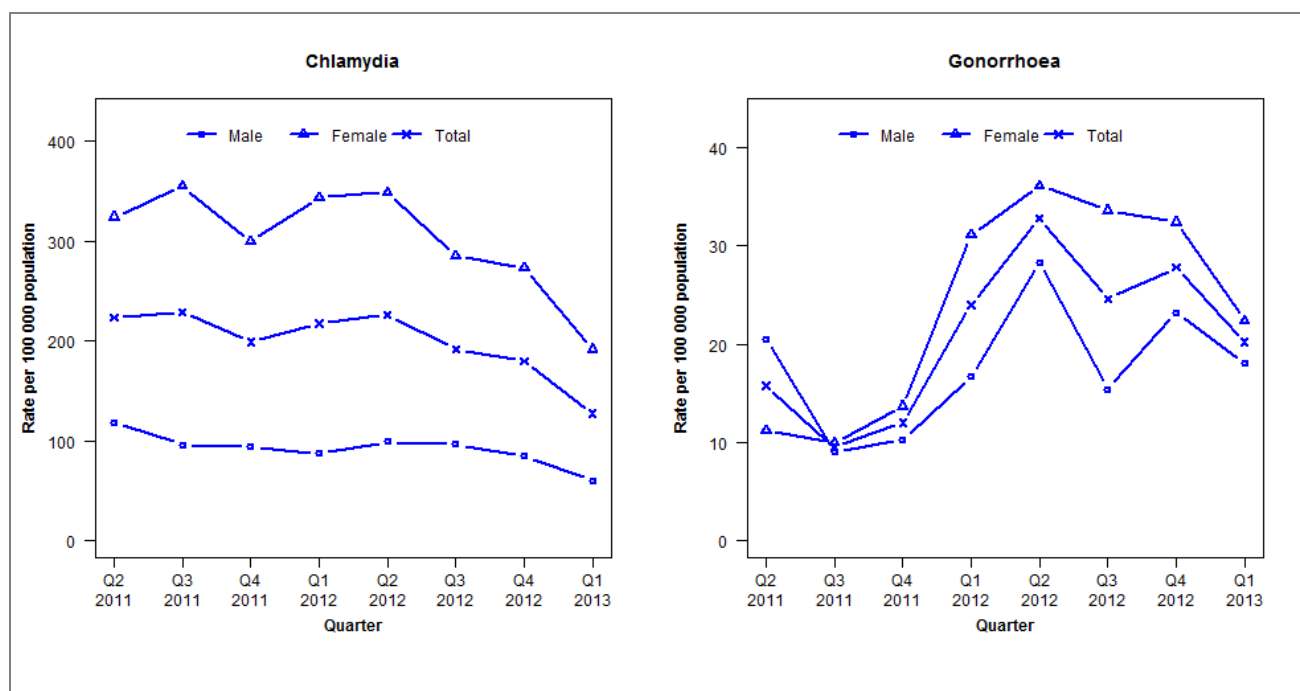


## Laboratory surveillance of chlamydia and gonorrhoea: January - March 2013

Quarterly chlamydia and gonorrhoea rates (female, male and total population), Apr 2011 to Mar 2013



Denominator = Statistics New Zealand mid-year population estimates

Note: New data processing procedures from Q1 2013 may have impacted slightly on the counts and rates produced. NAAT for gonorrhoea testing introduced in Q1 2012.

### Number of lab confirmed chlamydia cases (female, male and total population) and number of tests per 100 000 population, April 2011 to March 2013

	Q2 2011	Q3 2011	Q4 2011	Q1 2012	Q2 2012	Q3 2012	Q4 2012	Q1 2013
<b>Number of lab-confirmed cases<sup>1</sup></b>	353	362	315	344	358	304	285	202
<i>Female</i>	260	285	240	276	280	229	219	154
<i>Male</i>	92	75	73	68	77	75	66	47
<b>Tests per 100 000 population<sup>2</sup></b>	1969	1877	1808	1911	1838	1849	1857	1412

<sup>1</sup>Total includes cases where sex is not reported

<sup>2</sup>Denominator = Statistics New Zealand mid-year population estimates

### Number of lab confirmed gonorrhoea cases (female, male and total population) and number of tests per 100 000 population, April 2011 to March 2013

	Q2 2011	Q3 2011	Q4 2011	Q1 2012	Q2 2012	Q3 2012	Q4 2012	Q1 2013
<b>Number of lab-confirmed cases<sup>1</sup></b>	25	15	19	38	52	39	44	32
<i>Female</i>	9	8	11	25	29	27	26	18
<i>Male</i>	16	7	8	13	22	12	18	14
<b>Tests per 100 000 population<sup>2</sup></b>	2732	2923	2811	3122	3488	2678	2632	2827

<sup>1</sup>Total includes cases where sex is not reported

<sup>2</sup>Denominator = Statistics New Zealand mid-year population estimates